

Alfred Bader

Alfred Bader Fine Arts

[Selections from the Collection of Dr. + Mrs.
Alfred Bader - Krannert Drawing Room]

1984

QUEEN'S UNIVERSITY ARCHIVES	
LOCATION	5109
BOX	13
PAGE	2



Stillife with Plant & Grapefruit by Charles Munch

Selections
from the collection of
Dr. & Mrs. Alfred Bader
August 20-October 14
Krannert Drawing Room

Charles Munch & John Whalley

Selections from the collection of Dr. & Mrs. Alfred Bader
August 20-October 14

CHARLES MUNCH

1. FORMS
Oil on canvas
2. SANDPILES NEAR STURGEON BAY
Oil on canvas
3. SELF PORTRAIT
Oil on canvas
4. STILLIFE WITH PLANT &
GRAPEFRUIT
Oil on canvas
5. END OF SABBOTH
Oil on canvas
6. STILLIFE WITH JANE
Oil on canvas
7. RECLINING STILLIFE
Oil on canvas
Lent by the artist
8. STILLIFE WITH FLOWERPOT
& GLASS
Oil on canvas
Lent by David Bader
9. STAIRCASE
Oil on canvas
10. CHURCH NEAR STURGEON BAY
Oil on canvas
11. STILLIFE WITH JUG AND LEMON
Oil on canvas

JOHN WHALLEY

1. FARM SCALE
Tempera
2. FARM SCALE
Pencil study
3. BARN DOOR
Tempera
4. BARN DOOR
Watercolor Study
5. THE CARPENTER
Tempera
6. CHEMICAL STILLIFE
Tempera
7. TOOLS
Tempera
8. ATTIC CORNER
Tempera
9. THE WOODSHED
Tempera
10. LABORS END
Tempera
11. LINDA AND MATHEW
Pencil
12. THE WOODSHED
Watercolor study
13. LOADING DOCK
Tempera
14. BASKETS
Tempera
15. MONTAUK SHELL
Pencil
16. THE BELL
Lithograph

About the Collection . . .

These works by contemporary realist artists, Charles Munch and John Whalley, represent just a small portion of the extensive art collection owned by Dr. and Mrs. Alfred Bader. Dr. Bader, chairman of Milwaukee-based Sigma-Aldrich Chemical Company, one of the world's leading suppliers of research chemicals, is well known for collecting and restoring paintings by 16th and 17th century Dutch and Italian masters. Many of these paintings grace the offices at Sigma-Aldrich, and the company is noted for reproducing these works on the covers of its catalogues and brochures.

Charles Munch and John Whalley display the same meticulous brushwork and careful attention to detail that the Baders admire in the Dutch and Italian masters. The Baders predict that someday the works by Whalley may be the most valuable ones in their collection.

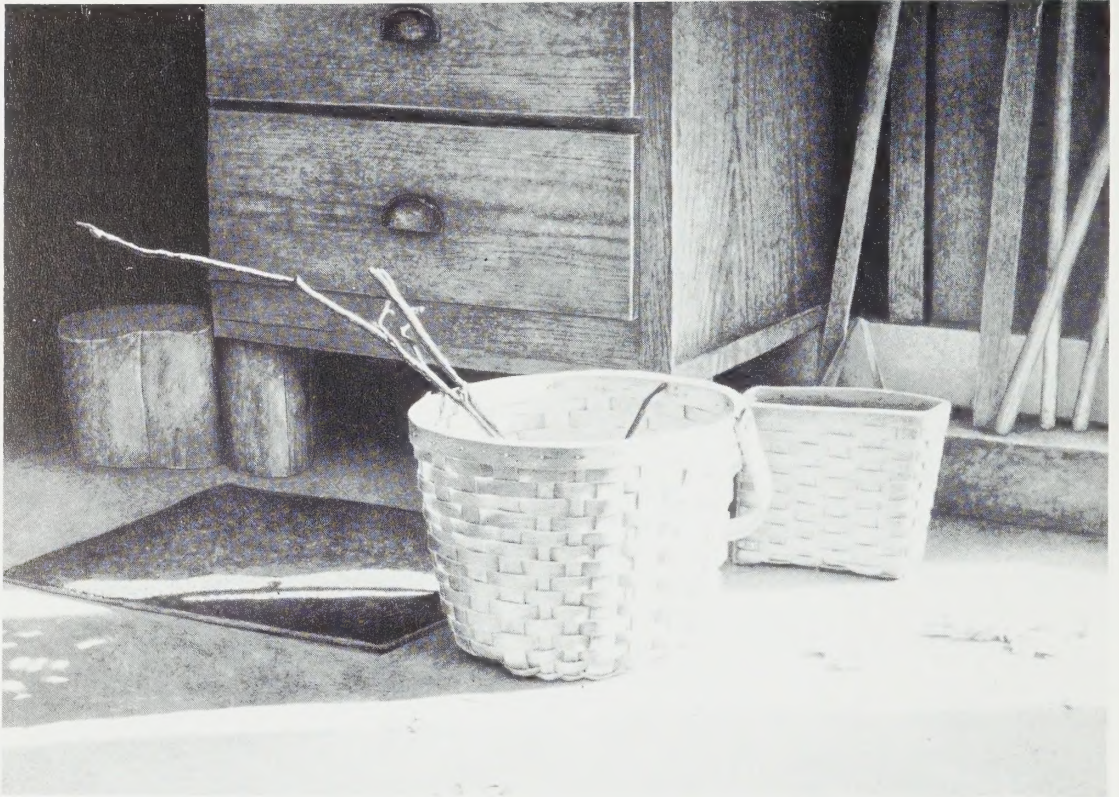
About the Series . . .

In today's technological world, corporations and business foundations increasingly look to art collections to impart fine design, power and influence as well as creativity to the working environment. This movement to reach beyond the gallery or museum walls and bring fine art to the business environment has been recognized by the Krannert School in developing an art exhibition program for the Krannert Drawing Room.

One of the school's major goals is encouraging broader communication and interaction with its friends in the corporate community. The exclusive exhibition of corporate art collections, including artists who have been widely supported or commissioned by the corporate sector, is one dimension of that goal.

The Krannert School is proud to present another in its series of Drawing Room exhibitions—"Selections from the collection of Dr. and Mrs. Alfred Bader"—from August 20 to October 14, 1984.





Baskets by John Whalley

**Krannert Graduate School of Management
Purdue University**



Stillife with Plant & Grapefruit by Charles Munch

Selections
from the collection of
Dr. & Mrs. Alfred Bader
August 20-October 14
Krannert Drawing Room

Charles Munch & John Whalley

Selections from the collection of Dr. & Mrs. Alfred Bader

August 20-October 14

CHARLES MUNCH

1. FORMS
Oil on canvas
2. SANDPILES NEAR STURGEON BAY
Oil on canvas
3. SELF PORTRAIT
Oil on canvas
4. STILLIFE WITH PLANT &
GRAPEFRUIT
Oil on canvas
5. END OF SABBOTH
Oil on canvas
6. STILLIFE WITH JANE
Oil on canvas
7. RECLINING STILLIFE
Oil on canvas
Lent by the artist
8. STILLIFE WITH FLOWERPOT
& GLASS
Oil on canvas
Lent by David Bader
9. STAIRCASE
Oil on canvas
10. CHURCH NEAR STURGEON BAY
Oil on canvas
11. STILLIFE WITH JUG AND LEMON
Oil on canvas

JOHN WHALLEY

1. FARM SCALE
Tempera
2. FARM SCALE
Pencil study
3. BARN DOOR
Tempera
4. BARN DOOR
Watercolor Study
5. THE CARPENTER
Tempera
6. CHEMICAL STILLIFE
Tempera
7. TOOLS
Tempera
8. ATTIC CORNER
Tempera
9. THE WOODSHED
Tempera
10. LABORS END
Tempera
11. LINDA AND MATHEW
Pencil
12. THE WOODSHED
Watercolor study
13. LOADING DOCK
Tempera
14. BASKETS
Tempera
15. MONTAUK SHELL
Pencil
16. THE BELL
Lithograph

About the Collection . . .

These works by contemporary realist artists, Charles Munch and John Whalley, represent just a small portion of the extensive art collection owned by Dr. and Mrs. Alfred Bader. Dr. Bader, chairman of Milwaukee-based Sigma-Aldrich Chemical Company, one of the world's leading suppliers of research chemicals, is well known for collecting and restoring paintings by 16th and 17th century Dutch and Italian masters. Many of these paintings grace the offices at Sigma-Aldrich, and the company is noted for reproducing these works on the covers of its catalogues and brochures.

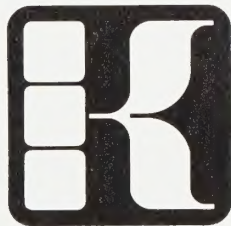
Charles Munch and John Whalley display the same meticulous brushwork and careful attention to detail that the Baders admire in the Dutch and Italian masters. The Baders predict that someday the works by Whalley may be the most valuable ones in their collection.

About the Series . . .

In today's technological world, corporations and business foundations increasingly look to art collections to impart fine design, power and influence as well as creativity to the working environment. This movement to reach beyond the gallery or museum walls and bring fine art to the business environment has been recognized by the Krannert School in developing an art exhibition program for the Krannert Drawing Room.

One of the school's major goals is encouraging broader communication and interaction with its friends in the corporate community. The exclusive exhibition of corporate art collections, including artists who have been widely supported or commissioned by the corporate sector, is one dimension of that goal.

The Krannert School is proud to present another in its series of Drawing Room exhibitions—"Selections from the collection of Dr. and Mrs. Alfred Bader"—from August 20 to October 14, 1984.





Baskets by John Whalley

**Krannert Graduate School of Management
Purdue University**