

Alfred Boder

Alfred Boder Fine Arts

Sam Goldberg list

196-7

QUEEN'S UNIVERSITY ARCHIVES	
LOCATOR	5169
BOX	12
FILE	3

Sears
Gallery
Number

~~1000~~ ^{Sold} 1 - STUART, GILBERT (American, 1755-1828)
"Portrait of Mrs. Betsy Hartigan" (bust-length)
Oil on wood panel 18 1/2" x 14 1/2" (sight size) ^{Sold} 400
_{7.18 x 1200 ✓}

~~2500~~ ^{Sold} 2 - OTIS, BASS (American, 1784-1861)
"Portrait of Miss Latrobe of Baltimore"
(almost half-length)
Oil on canvas 29" x 24"
(Restored, re-lined, and backed by A. J. Konrad,
circa 1964) 1200
_{Sold HM 1200}

^{Sold} 4000 3 - VANDERLYN, JOHN (American, 1775-1852)
"Portrait of Henry Eckford" (half-length seated figure)
Oil on canvas 31" x 25" ^{Sold} 1000
_{Sold MAG \$1050 gross}

800 ^{Sold} 4 - JARVIS, JOHN WESLEY (American, 1780-1839)
"Portrait of John Laurance" (bust-length) ^{Sold} 200
Oil on canvas 30" x 24 1/4" _{Sold MAG 175 gross}

1000 ^{Sold} 5 - PRATT, MATTHEW (American, 1734-1805)
"Portrait of a Man" (bust-length) ^{Sold} 400
Oil on wood panel 28 1/4" x 23" _{Sold MAG 275 gross}
Initialed and signed middle right - "B-M. Pratt fecit"

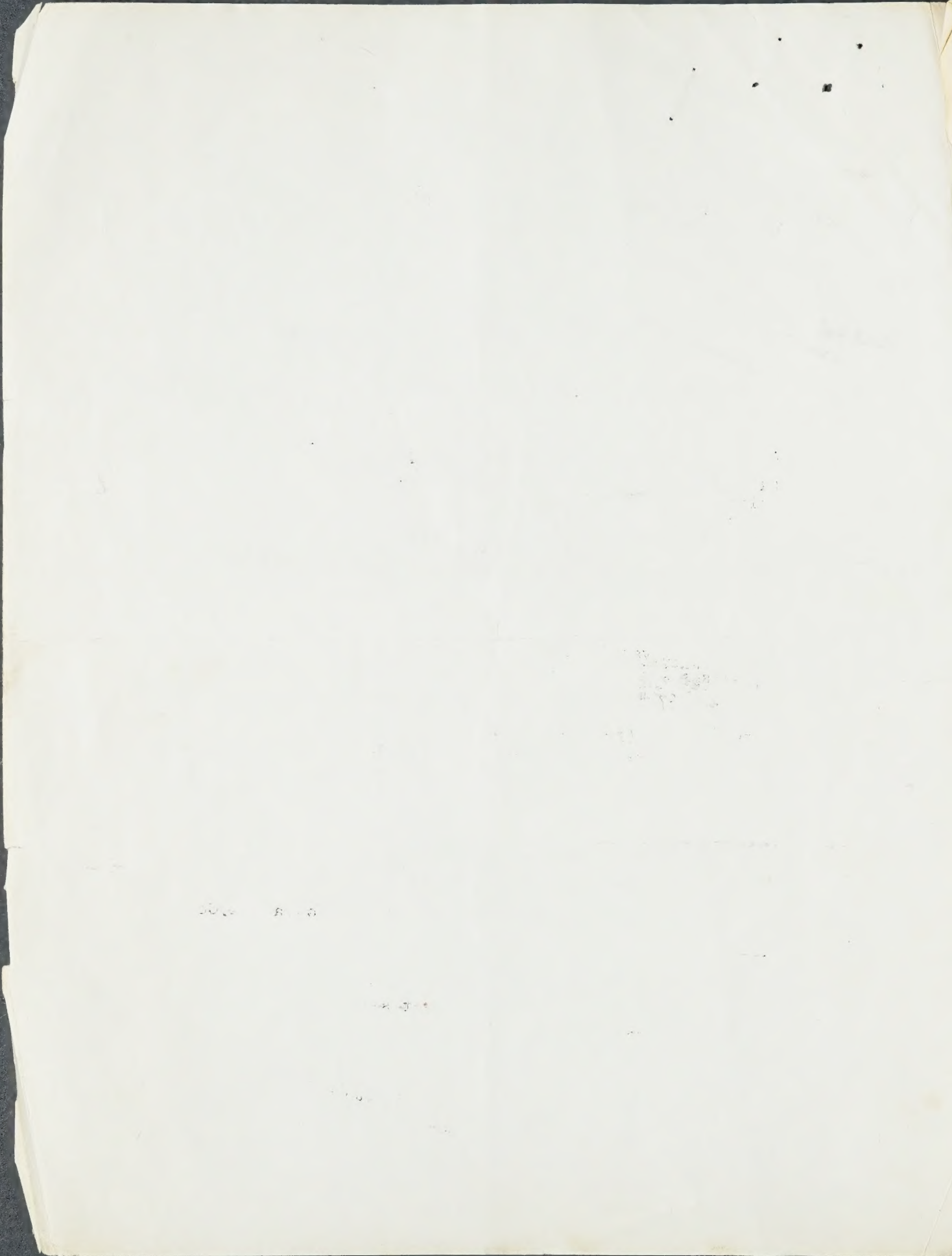
~~10000~~ ^{Sold} 6 - BLACKBURN, JOSEPH (active 1752-1774) ^{Hensel in} 1200
"Portrait of Susana Ulrich" (three-quarter-length
seated figure) _{Van H}
Oil on canvas 44" x 33", mounted on presdwood panel
and cradled _{175 1800}

1200 ^{Sold} 7 - PINE, ROBERT EDGE (American, 1730-1788)
"Portrait of Plunkett Fleeson" (half-length) _{Van H}
Oil on wood panel 29" x 23 5/8" 300

^{Sold} 2000 9 - TRUMBULL, JOHN (American, 1757-1843)
"Portrait of John Floyd" (bust-length) ^{Sold} 800
Oil on canvas 24" x 20" _{gross}
Restored, re-lined, and backed by A. J. Konrad, 1964) ₈₀₀

^{Sold} 7500 11 - FEKE, ROBERT (American, 1725-1769)
"Portrait of a Man" (half-length figure, an appealing
picture of a man, with his dog)
Oil on canvas 29" x 24 3/4" 1200

9000



2500 14 - ~~EMMONS, NATHANIEL (American, 1704-1740)~~
 "Portrait of a Man" (half-length figure)
 Oil on canvas 27 3/4" x 23 1/2" *Sold MAB 200 gross* ✓ 300

18 - PEALE, CHARLES WILLSON (American, 1741-1827)
 "Portrait of Gen. George Washington"
 (almost three-quarter length standing figure, in full uniform, in army camp)
 Oil on canvas approximately 35" x 25 1/4" (sight size) 0

4000 22 - PELHAM, PETER (American, 1684-1751)
 "Portrait of Rev. Experience Mayhew" (bust-length)
 Oil on canvas 28" x 24" 500

10000 24 - READ, WILLIAM (American, 1607-1679)
 "Portrait of a Man" (bust-length) *to Ed Wright*
 Oil on canvas 10 1/2" x 8 1/4"
 Inscribed and dated upper left "W R (monogram), pinxit, 1674" 1600

3500 26 - WATSON, JOHN (American, 1685-1768)
 "Fanny and Rosamond--Daughters of Ebenezer Wilson"
 (half-length figures of little girls) *Sold MAB 1300 gross*
 Oil on canvas 24 1/2" x 30" 1200
 (Restored, re-lined, and backed by A. J. Konrad, 1964)

10000 29 - VANDERLYN, PIETER (American, 1680-1758)
 "Portrait of Helena Bogardus Van Buren"
 (almost three-quarter-length figure)
 Oil on canvas 33 1/4" x 26 1/4"
 (Restored, re-lined, and backed by A. J. Konrad, 1966) 3000
~~3000~~

7500 30 - SMIBERT, JOHN (American, 1658-1751)
 "Portrait of (Master) John Taylor" (full-length standing figure of young lad in fancy costume)
 Oil on canvas 49 1/4" x 39" (sight size)
 Signed and dated lower right "Smibert, 1747?" 2100

7500 31 - EARL, RALPH (American, 1751-1801)
 "Portrait of a Child" (full-length standing figure of little girl in long white dress with wide blue silk sash and large plumed hat)
 Oil on canvas 45 1/2" x 32 1/4"
 Signed lower left "R. Earl" 2500

43000 *from ins.* 13800



Sold \$200
Bill of Sale #15

- 300 35 Sold SULLY, THOMAS (American, 1783-1872)
"Portrait of Virginia Sully" (half-length figure)
Oil sketch on panel (?) 12 1/2" x 9 1/2" 100
- 800 Sold 37 - SULLY, THOMAS (American, 1783-1872),
"Portrait of a Girl" (actually a study of a young
girl filling a pitcher at a stream) 250
Oil sketch on canvas 21" x 20"
ret. Sold MAG 320 gross
- 300 Sold 40 HEALY, GEORGE P. A. (American, 1813-1894)
"Stella Dyer" (life-size full-length standing figure
of young woman playing violin) 100
Oil on canvas 78" x 44"
Signed and dated lower right "G(?) Healy, 1889"
- 500 41 Sold JOUETT, MATTHEW HARRIS (American, 1787-1827).
"Portrait of Major McKenny" (bust-length) 100
Oil on canvas (approximately 30" x 25")
- 2000 Sold 42 JOHNSON, EASTMAN (American, 1824-1906)
"Portrait of Seth Low" (bust-length) 300
Oil on canvas 27" x 22"
Initialed lower right "E. J."
- 6000 Sold 43 MORSE, SAMUEL F. B. (American, 1791-1872)
"Portrait of I. W. Forbes, Silversmith"
(half-length seated figure) 2500
Oil on canvas 30" x 25"
Restored, re-lined, and backed by A. J. Konrad, 1964)
- 3500 Sold 44 LEUTZE, EMANUEL (German, American, 1816-1868)
"Portrait of Frederick E. Church" (half-length seated
figure of the artist) 500
Oil on canvas 36" x 28"
- 5000 Sold 47 READ, T. BUCHANAN (American, 1822-1872)
"Sheridan's Ride" (General Sheridan, in uniform, on
galloping horse, leading his men into battle). 800
Oil on canvas 25 1/4" x 20 1/2"
- 6000 Ret. 48 - CARTER, DENNIS MALONE (American, 1827-1881)
"Portrait of Rufus Griswold" (bust-length) 100
Oil on canvas, oval cut, 22" x 18"
Van H
- 400 Sold 49 - RINCK, ADOLPH
"Portrait of a Young Man" (bust-length) 200
Oil on canvas 27" x 21 3/4"
Signed and dated 1840
(Formerly catalogued as "Self Portrait" by James Audubon)
ret. Sold 175 gross
MAG

4750



Sold Fair King

50 *Ret* KYLE, JOSEPH (American, 1815-1863)
"A Family Group" (interior with mother, seated, and father, standing, and three young children)
Oil on canvas 34 1/2" x 26 3/8" (sight size)
8000 sold

1000 -
~~1111~~

51 *sold* INMAN, HENRY (American, 1801-1846)
"Portrait of Mr. Dustin" (bust-length)
Oil on artist's board 29 1/2" x 24 3/4" showing original octagonal picture size 24" x 20"
1200 sold \$4000 gross MAG

300

53 *3500 sold* WALDO, SAMUEL L. (American, 1783-1861)
"Portrait of Moses Hicks Grinnell" (half-length seated figure)
Oil on wood panel 30" x 24 1/2"

700

sold 54 *Ret* SULLY, THOMAS (American, 1783-1872)
"Portrait of Mr. Dwyer" (almost half-length seated figure)
Oil on canvas 28 3/4" x 24"
10000 sold 1750 gross MAG

1700

55 *1800 Ret* HUNTINGTON, DANIEL (American, 1816-1906)
"Portrait of Mrs. Brown of Philadelphia" (bust-length)
Oil on canvas 24" x 20"
Signed lower left "D. Huntington"
sold L.H. \$600 -

400

57 *Ased 400 418* PEALE, REMBRANDT (American, 1778-1860)
"Portrait of Mrs. Thomas William Hughes" (half-length seated figure)
Oil on canvas 28 1/8" x 23 3/4"

200

58 *1200 sold ** PEALE, REMBRANDT (American, 1778-1860)
"Portrait of Mrs. Sarah Ward Ninde" (bust-length)
Oil on canvas 24 3/4" x 19 3/4"

600

59 *800 sold ** PEALE, REMBRANDT (American, 1778-1860)
"Portrait of James Ninde" (bust-length)
Oil on canvas 23 3/4" x 19 3/4"

300

61 *4500 sold* LE CLEAR, THOMAS (American, 1818-1882)
"Young America"
(almost half-length standing figure of young newsboy)
Oil on canvas 20" x 16"
Signed lower left "Thos. LeClear"
(Restored, re-lined, and backed by Anton J. Konrad, 1965)

1800

4600



12 66 Sold MORAN, EDWARD (American, 1829-1901)
"Marine" (Harbor scene in moonlight)
Oil on canvas 20" x 16"
Signed lower left "Edward Moran"

500 72 Ret. BIERSTADT, ALBERT (American, 1830-1902)
"Mountain Brook"
Oil on canvas 10 1/4" x 16 1/2"

Sold MAG \$4500 8/25/25

350 80 Ret. BEARD, WILLIAM H. (American, 1821-1900)
"On a Spree" (Two bears, in sandbank, one drunk on his back, with whiskey bottle)
Oil on canvas 12 1/4" x 10 1/4"
Signed lower left "W. Beard"

2500 83 Sold CASILEAR, JOHN W. (American, 1811-1893)
"Landscape"
(Hudson River Valley School, vista with winding river, figure in foreground)
Oil on canvas 22 1/4" x 40"

200 83A Sold CASILEAR, JOHN W. (American, 1811-1893)
"Landscape"
(Orchard trees in the foot-hills)
Oil on wood panel 6" x 10"

2000 84 Ret. COPLEY, JOHN SINGLETON (American, 1737-1815)
"The Siege of Gibraltar" (Harbor scene with burning vessels, rescue boats and figures to the right)
Oil on canvas 62" x 93 1/2"

sw # 21
M. W. Art Center

2500 85 Sold WEST, BENJAMIN (American, 1738-1820)
"Christ on the Mount of Olives" (night scene)
Oil on canvas 16 3/4" x 23 1/4"

#17



86 ⁵⁰⁰ SULLY, THOMAS (American, 1783-1872) *Sold to H. Moore 2/6/70*
"Beggar and Daughter" (almost half-length figure
of elderly unkempt man, with young woman)
Oil on canvas 30" x 25"

87 ¹²⁰⁰ HUNTINGTON, DANIEL (American, 1816-1906)
"Mercy's Dream" (Sentimental literary subject from
Bunyan's Pilgrim's Progress, with angel and young woman)
Oil on canvas, arched at top, 35 1/2" x 28 1/2"

89 ²⁵⁰⁰ WEST, BENJAMIN (American, 1738-1820)
"The Last Supper" (Christ and His Disciples at Table
in the Upper Room) *Sold*
Oil on canvas 17 3/4" x 23 3/4"

90 ³⁰⁰⁰ WEST, BENJAMIN (American, 1738-1820)
"Christ Feeding the Multitude" (On a hill, Josus,
seated, helps the disciples to distribute bread and
fishes to a motley crowd standing or seated about)
Oil on canvas 51" x 89 1/2" (sight size)

92 ¹⁰⁰ SULLY, THOMAS (American, 1783-1872)
"Virginia Sully and her Two Children"
Oil sketch on panel (?) 9 1/2" x 12 1/2"

93 ³⁰⁰ DUVENECK, FRANK (American, 1848-1919) *Sold*
"Portrait of a Girl"
Oil on canvas 16 1/2" x 12 3/4"

95 ³⁰⁰ COMAN, CHARLOTTE B. (American, 1833-1924) *Sold #18*
"Farm House in Holland"
Watercolor with pastel (?) on paper 11 5/8" x 12 1/8"
(sight size)
Signed lower left "C. B. Coman"

100 ¹⁵⁰⁰ JOHNSON, EASTMAN (American, 1824-1906) *Sold*
"Feeding the Turkey" (young woman with turkey)
Oil on canvas 24" x 16"
Signed lower left "E. Johnson"
(Restored, re-lined, and backed by A. J. Konrad, 1966)

105 ⁴⁰⁰⁰ WHISTLER, JAMES A. McNEILL (American, 1834-1903) *Sold*
"On the Beach--Ostend" (numerous figures, chiefly ladies
standing or sitting, on wide sandy beach)
Oil on canvas 10 3/4" x 17"
Signed and dated lower left "Whistler, 1868 (?)"
(Restored, re-lined, and backed by A. J. Konrad,
circa, 1965)



- 106 *Sold* BLAKELOCK, RALPH (American, 1847-1919) *Sold*
 "Wood Interior"
 Oil on wood panel 7 5/8" x 11 1/8" (cradled) *Bill \$200*
 Signed lower left "R. A. Blakelock"
- 108 *Sold* HUNT, WILLIAM MORRIS (American, 1824-1879) *Ret.*
 "Sunlight and Shadow" (woodland scene in autumn)
 Oil on canvas 18" x 14" *Sold M/Ala 575*
 Signed lower left "W. Hunt" *gross*
- 110 *Sold* INNESS, GEORGE (American, 1825-1894)
 "Landscape" (valley view with cottages on hillside)
 Oil on canvas 12" x 15"
 Signed lower right "G. Inness"
- 112 *Sold* INNESS, GEORGE (American, 1825-1894)
 "Sunset" (Cabin and fields with figures in last
 light of day)
 Oil on artist's panel (?) 9 1/2" x 19 1/2" *Sold M/Ala 400*
 Signed lower right "G. Inness"
- 118 *Sold* HILL, THOMAS (American, 1829-1908)
 "Yosemite Valley"
 Oil on canvas 8 1/2" x 15"
 Signed lower right "T. Hill"

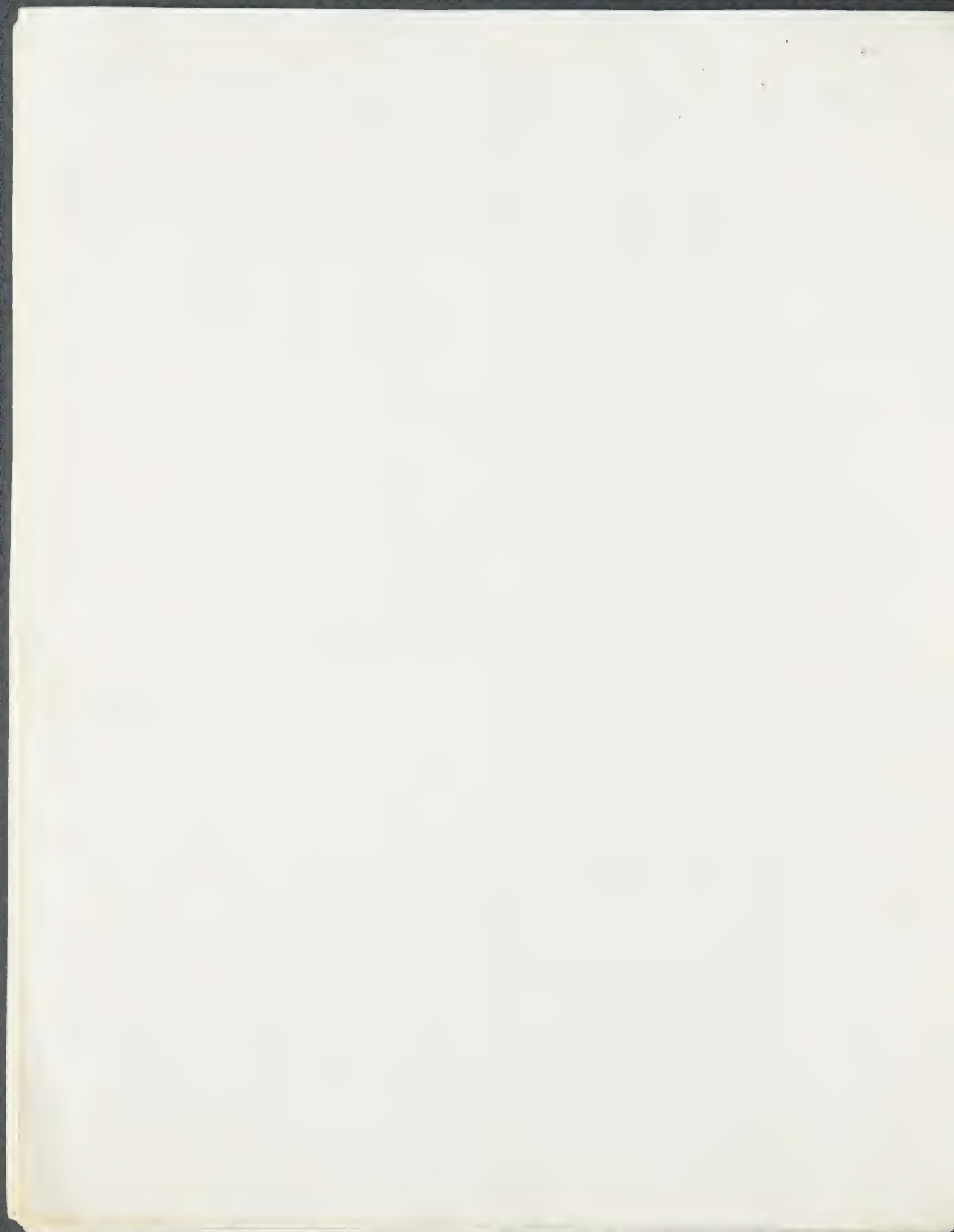
100

- 122 *Sold* BOUGHTON, GEORGE (American, 1834-1905)
 "Sea Breeze" (young girl in white dress and ribboned
 "bonnet", standing against stone wall, looking out
 across blue water)
 Oil on wood panel (?) 21" x 12 3/4"
 Signed lower right "G. H. Boughton"
- 123 *Sold* KENSETT, J. F. (American, 1818-1872)
 "Landscape" (Mountain lake with islands)
 Oil on canvas 9 1/2" x 13" (sight size)
- 125 *Sold* HART, WILLIAM (American, 1823-1894) *Sold*
 "Landscape" (Bucolic scene with figures and cattle) *Bill 350*
 Oil on canvas 11" x 17 1/2"
- 126 *Sold* RANGER, HENRY (American, 1858-1916) *Sold*
 "Harbor"
 (quai with figures and ships)
 Oil on artist's board (?) 18" x 25 1/2"
 Signed lower left "H. W. Ranger"

80



- 128 CHASE, WILLIAM MERRITT (American, 1849-1916) *Sold*
Sold "Still Life" (Copper or brass pan, pail, and mug,
 1500 with fish, on table) *Billed \$1100*
 Oil on canvas 17" x 24"
 Signed lower right "Wm. M. Chase"
- 136 COROT, J. B. CAMILLE (French, 1796-1875)
Sold "Moonlight" (Moon rising over treed landscape)
 500 Oil on canvas 8" x 8 1/2"
 Signed lower right "Corot"
- 137 COROT, J. B. CAMILLE (French, 1796-1875)
Sold "Trees" (Figures in wooded bank of lake)
 Oil on wood panel 12" x 7 15/16"
 Signed lower right "Corot"
- 138 COROT, J. B. CAMILLE (French, 1796-1875)
Sold "Landscape" (Open vista, with trees at left, building
 and woods to right)
 Oil on panel 16" x 20" (cradled)
 Signed lower left "Corot"
- 140 MONTICELLI, ADOLPH (French, 1824-1886)
Sold "Council of Conte" (or Conti)
 500 (Classical interior with numerous figures)
 Oil on canvas mounted on wood panel (?) 9 1/2" x 12 5/8"
 (sight size)
- 4 144 - HOBBEEMA, MEINDERT (Dutch, 1638-1709) *Sold* *MAG 300*
Sold "Brick Tower" (marsh landscape)
 Oil on panel 16 1/4" x 22 1/4" (cradled) *1000*
- 150 DOMENICHINO, ZAMPIERI (Italian, 1581-1641)
350 paid "Portrait of a Man" (bust-length figure of elderly
 bearded man)
 Oil on canvas 19" x 15"
- 151 - ROSA, SALVATORE (Italian, 1615-1673)
150 paid "Classical Landscape with Harbor"
 Oil on canvas 5 1/2" x 9 3/4"
- 152 RENI, GUIDO (Italian, 1575-1642)
250 paid "Lucrezia Romana" (Lucretia, with dagger, descending
 steps of Classical interior)
 Oil on canvas 17 1/4" x 12 3/4"
- 153 DOLCI, CARLO (Italian, 1616-1686)
300 sold "Mater Dolorosa" (half-length figure of the tearful
 Madonna, with two cherubic angels)
 Oil on canvas 32 1/4" x 29 1/4" (sight size) *1000*



Exchange
March 2/11
500

5000
154 - PARMEGIANINO, MICHELE (Italian, 1671-1751/7)
"Flight Into Egypt" (group of Mary with Christ-child
on donkey, Joseph on foot, young St. John seated
with lamp and dog)
Oil on canvas 48 1/2" x 36 1/2" (sight size)

2000
155 ROBUSTI, JACOPO GIACOMO (TINTORETTO)
(Italian, 1512/8-1594)
"Portrait of a Doge" (half-length seated figure)
Oil on canvas 45" x 37 3/4" (sight size)

100
157 - BELLINI, GIOVANNI (Italian, 1422-1512)
"Madonna and Child" (group at half-length of the
Virgin holding jolly clothed Christ-Child)
Oil on wood panel 22" x 18"
100
157

300

50

OIL ON CANVAS

161 - CAERERICI, GAETANO (Italian, 1838-1877)
"An Interested Audience" (boys peering through a wall)
Oil on panel 5 1/2" x 8"

400
163 ISABEY, EUGENE (French, 1804-1886)
"Wedding Breakfast" (Interior with numerous figures
about table, one man toasting the bride)
Oil on wood panel 11 3/4" x 14 3/4"
Signed lower right "E. Isabey"

Sed
Bill 250

1500
194 - KEITH, WILLIAM (American, 1839-1911)
"Landscape" (Open fields with cows wading in pool
or stream)
Oil on canvas 22 3/4" x 32 3/4" (sight size)
Signed lower right "W. Keith"

Sold MAG 550 gross

400
195 GENTH, LILLIAN MATHILDE (American, 1876-?)
"On the Hudson" (Looking from Rockland Lake, N. Y.
at dusk)
Oil on canvas 18" x 23"
Signed lower right, "L.M. Genth"

Sold MAG 100 gross

200
203 MORAN, THOMAS (American, 1837-1926)
"Grand Canyon" (Late afternoon, with canyon stream
at left)
Oil on wood panel 20 3/4" x 20"

800
212 SYMONS, GEORGE GARDNER (American, 1863-1930)
"Melting Snow" (Rivulet and wooded hills in spring)
Oil on canvas 18" x 24"
Signed lower right "Gardner Symons"

100

600



-10 -last-

- 219 WAUGH, FREDERIC J. (American, 1861-1940)
"Marine" (Rocks and Surf)
Oil on artist's board 11 1/8" x 13 3/8" (sight size)
Initialled lower right "W" 150
- 225 ISABEY, EUGENE (French, 1804-1886)
"Harbor Scene"
Oil on canvas 12 1/2" x 18 1/4"
Signed lower right "Isabay" 200
- 233 DAVIS, GLADYS ROCKMORE (American, 20th century)
"Portrait of a Girl" (half-length seated figure of
young girl in white dress, holding bouquet of red roses)
Oil on canvas 30" x 25" 300
- ELLIOTT, CHARLES LORING (American, 1812-1868)
"Portrait of Judge William Learned Marcy" (bust-length)
Pen-and-ink wash on paper 8 1/2" x 6 3/4" (sight size)
Signed and dated lower right "Elliott, 1843" 100
- DICKIE (?), GILES (?) Dupré
"Landscape" (View of fields and stream, with cow or
cattle grazing)
Oil on canvas 14" x 21" 250

TOTAL

1100

- Ret. 300 - ~~Rampson~~
- Ret. - ~~Dore~~
- Ret. ~~Deby~~
- Ret. 100 - ~~Parke: Barnett~~

Sold P.B. \$100 less comm.

42

Sub
75 - 25%

Passage
75 wk

52150
27450
79600
18750
60850

13850
4900
18750

11	6500	1200	95	300	100
29	8000	3000	100	1500	300
35	300	100	105	12000	1300
40	300	100	106	300	100
41	500	100	110	800	100
42	2000	300	118	400	100
43	6000	2500	122	1500	300
44	3500	500	123	250	50
47	4500	800	125	600	100
53	3500	700	126	1000	100
57	400	200	128	1500	700
58	1200	600	136	500	200
59	800	300	137	200	50
61	4500	1800	138	200	50
64	1200	200	140	500	100
76	600	200	150	350	50
80	350	100	151	150	50
83	2500	300	152	250	50
83A	200	50	153	300	100
85	2500	400	155	1500	300
89	2500	400	157	100	50
93	300	100	160	400	100
	<u>52150</u>	<u>13850</u>	203	200	50
			212	800	100
			219	600	150
			<u>27450</u>	<u>4900</u>	<u>250</u>