

Alfred Boder

Alfred Boder Fine Arts

Leve Art Galleries -
American Paintings

1948

CLARENCE UNIVERSITY ARCHIVES	
LOCATOR	S169
BOX	12
FILE	1

Price \$1.00



AMERICAN PAINTINGS

Lenz Art Gallery

3903 West North Avenue

Milwaukee, Wisconsin 53208

Alfred and Len
bought the gallery
together

AMERICAN PAINTINGS

from

The Collection of

The Laura Davidson Sears Academy of Fine Arts

of

The Elgin Academy

Elgin, Illinois

Offered for Sale — 1968

Lenz Art Gallery

3903 West North Avenue

Telephone Area Code 414-444-5375

Milwaukee, Wisconsin 53208

WILLIAM H. BEARD (1821-1900)

- 1 *On a spree*, two bears in sandbank, one drunk on his back, with whiskey bottle, signed lower left W. Beard, oil on canvas 12¼ in. x 10¼ in.

ALBERT BIERSTADT (1830-1902) attributed

- 2 *Mountain brook*, oil on canvas 10¼ in. x 16½ in.

JOSEPH BLACKBURN (active 1752-1774)

- 3 *Portrait of Susana Alrich*, oil on canvas (mounted on panel and cradled) 44 in. x 33 in.

[ILLUSTRATED]

RALPH BLAKELOCH (1847-1919)

- 4 *Wood interior*, signed lower left R. A. Blakeloch, oil on wood panel (cradled) 7⅞ in. x 11⅞ in.

GEORGE BOUGHTON (1834-1905)

- 5 *Sea breeze*, young girl in white dress looking out across blue water, signed lower right G. H. Boughton, oil on wood panel 21 in. x 12¾ in.



No. 3

DENNIS MALONE CARTER (1827-1881)

- 6 *Portrait of Rufus Griswold*, bust-length, oil on canvas (oval cut)
22 in. x 18 in.

JOHN W. CASILEAR (1811-1893)

- 7 *Landscape*, orchard trees in the foothills, oil on paper 6 in. x 10 in.

JOHN W. CASILEAR (1811-1893)

- 8 *Landscape*, initialed J. W. C. and dated 1889 lower left corner, oil on
canvas 22¼ in. x 40 in.

WILLIAM MERRITT CHASE (1849-1916)

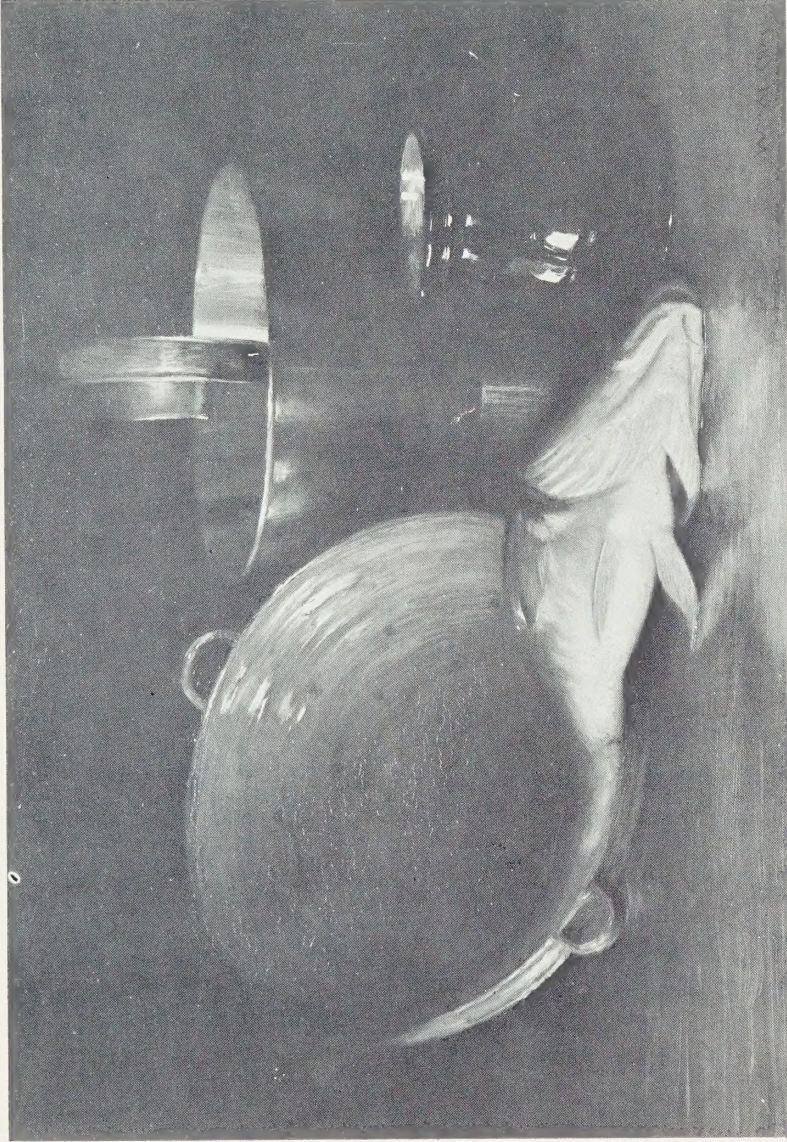
- 9 *Still life*, signed lower right Wm. M. Chase, oil on canvas 17 in. x 24 in.
[ILLUSTRATED]

THOMAS COLE (1801-1848) attributed

- 9A *Landscape*, idyllic scene with figure and cattle, signed Thos. Cole, oil
on canvas 10⅞ in. x 15⅞ in.

CHARLOTTE B. COMAN (1833-1924)

- 10 *Farm house in Holland*, signed lower left C. B. Coman, watercolor and
pastel on paper 11⅝ in. x 12⅝ in.



No. 9

JOHN SINGLETON COPLEY (1737-1815) attributed

- 11 *Siege of Gibraltar*, oil on canvas 62 in. x 93½ in.

RALPH EARL (1751-1801)

- 12 *Young girl with rabbit*, signed lower left R. Earl, oil on canvas
45½ in. x 32¼ in.

[ILLUSTRATED]

CHARLES LORING ELLIOTT (1812-1868)

- 13 *Portrait of Judge William Learned Marcy*, bust-length, signed and dated
lower right Elliott 1843, pen and ink wash on paper 8½ in. x 6¾ in.



No. 12



NATHANIEL EMMONS (1704-1740)

14 *Portrait of man*, oil on canvas

27³/₄ in. x 23¹/₂ in.

[ILLUSTRATED]



ROBERT FEKE (1725-1769)

15 *Portrait of man with spaniel*, oil on canvas
[ILLUSTRATED]

29 in. x 24³/₄ in.

LILLIAN MATHILDE GENTH (1876-?)

- 16 *On the Hudson*, looking from Rockland Lake, N. Y., at dusk, signed lower right L. M. Genth, oil on canvas 18 in. x 23 in.

WILLIAM HART (1823-1894)

- 17 *Landscape*, scene with figures and cattle, signed lower right Wm. Hart, oil on canvas 11 in. x 17½ in.

GEORGE P. A. HEALY (1813-1894) attributed

- 18 *Stella Dyer*, life-size full-length standing figure of young woman playing violin, signed and dated lower right G. P. Healy 1889, oil on canvas

THOMAS HILL (1829-1908)

- 19 *Yosemite Valley*, signed lower right T. Hill, oil on canvas 8½ in. x 15 in.

WILLIAM MORRIS HUNT (1824-1879)

- 20 *Sunlight and shadow*, woodland scene in autumn, signed lower left W. Hunt, oil on canvas 18 in. x 14 in.



DANIEL HUNTINGTON (1816-1906)

- 21 *Mercy's dream*, literary subject from Bunyan's *Pilgrim's Progress*, oil on canvas (arched top) 35½ in. x 28½ in.

[ILLUSTRATED]



DANIEL HUNTINGTON (1816-1906)

22 *Portrait of Mrs. Brownley Brown*, bust-length, signed lower left D. Huntington, oil on canvas

24 in. x 20 in.

[ILLUSTRATED]



HENRY INMAN (1801-1846)

- 23 *Portrait of Mr. Dustin*, bust-length, showing original octagonal picture
size 24 in. x 20 in., oil on board 29½ in. x 24¾ in.
[ILLUSTRATED]

GEORGE INNESS (1825-1894) attributed

- 24 *Sunset*, cabin and fields with figures in last light of day, signed lower right G. Inness, oil on panel 9½ in. x 19½ in.

GEORGE INNESS (1825-1894)

- 25 *Landscape*, valley view with cottages on a hillside, signed lower right G. Inness, oil on canvas 12 in. x 15 in.

JOHN WESLEY JARVIS (1780-1839) attributed

- 26 *Portrait John Laurance*, bust length, oil on canvas 30 in. x 24½ in.

EASTMAN JOHNSON (1824-1906)

- 27 *Feeding the turkey*, young woman holding hand high over turkey, signed lower left E. Johnson, oil on canvas 24 in. x 16 in.

EASTMAN JOHNSON (1824-1906)

- 28 *Portrait of Seth Law*, bust length, signed lower right E. J., oil on canvas
27 in. x 22 in.

MATHEW HARRIS JOUETT (1787-1827)

- 29 *Portrait of Major McKenny*, bust length, oil on canvas 30 in. x 25 in.

WILLIAM KEITH (1839-1911)

- 30 *Landscape*, open fields with cows wading in pool, signed lower right W.
Keith, oil on canvas 22¾ in. x 32¾ in.

J. F. KENSETT (1818-1872) attributed

- 31 *Landscape*, mountain lake with islands, oil on canvas 9½ in. x 13 in.

JOSEPH KYLE (1815-1863)

- 32 *A family group*, interior with mother seated, and father standing, and three young children, oil on canvas 34½ in. x 26⅜ in.
[ILLUSTRATED]



No. 32

THOMAS LE CLEAR (1818-1882)

- 33 *Young America*, half-length standing figure of a young newsboy, signed
lower left Thos. LeClear, oil on canvas 20 in. x 16 in.
[See front cover]

EMANUEL LEUTZE (1816-1868)

- 34 *Portrait of Frederick E. Church*, half-length seated figure of the artist,
signed center on book E. Leutze, N. Y., 1865, oil on canvas 36 in. x 28 in.

[ILLUSTRATED]

EDWARD MORAN (1829-1901)

- 35 *Marine*, harbor scene in moonlight, signed lower left Edward Moran, oil
on canvas 20 in. x 16 in.



No. 34



SAMUEL F. B. MORSE (1791-1872)

36 *Portrait of I. W. Forbes*, half-length seated figure of the silversmith, oil
on canvas 30 in. x 25 in.

[ILLUSTRATED]



BASS OTIS (1784-1861)

37 *Portrait of Miss Latrobe*, oil on canvas

[ILLUSTRATED]

29 in. x 24 in.



REMBRANDT PEALE (1778-1860) attributed

38 *Portrait of James Ninde*, oil on canvas

24¾ in. x 19¾ in.

[ILLUSTRATED]



REMBRANDT PEALE (1778-1860) attributed

39 *Portrait of Sarah Ward Ninde*, oil on canvas

24 $\frac{3}{4}$ in. x 19 $\frac{3}{4}$ in.

[ILLUSTRATED]

REMBRANDT PEALE (1778-1860) attributed

- 40 *Mrs. Thomas William Hughes*, oil on canvas 28 $\frac{1}{8}$ in. x 23 $\frac{3}{4}$ in.

PETER PELHAM (1684-1751)

- 41 *Portrait of Rev. Experience Mayhew*, oil on canvas 28 in. x 24 in.
[ILLUSTRATED]

ROBERT EDGE PINE (1730-1788)

- 42 *Portrait of Plunkett Fleeson*, half-length, oil on wood panel
29 in. x 23 $\frac{5}{8}$ in.

MATTHEW PRATT (1734-1805) attributed

- 43 *Portrait of man*, signed right B. F. M. Pratt fecit, oil on wood panel
28 in. x 23 in.



No. 41

HENRY RANGER (1858-1916)

- 44 *Harbor, scene in Holland with figures and ships*, signed lower left H. W. Ranger, oil on artist's board 18 in. x 25½ in.

T. BUCHANAN READ (1822-1872)

- 45 *Sheridan's ride*, signed lower left T. Buchanan Read/Rome 1865, oil on canvas 25¼ in. x 20½ in.

[ILLUSTRATED]



No. 45

WILLIAM READ (1607-1679)

- 46 *Portrait of a man*, inscribed and dated upper left W. R., pinxit 1674, oil
on canvas 10½ in. x 8¼ in.

[ILLUSTRATED]

ADOLPH RINCK (active 1840-1871)

- 47 *Portrait of young man*, bust-length, signed and dated 1840, oil on canvas
27 in. x 21¾ in.



No. 46



SCHUYLER LIMNER (1692-1760)

48 *Portrait of Helena Borgardus Van Buren, oil on canvas*

33¼ in. x 26¼ in.

[ILLUSTRATED]



JOHN SMIBERT (1658-1751)

49 *Portrait of Master John Taylor*, signed and dated lower right Smibert,
1743, oil on canvas

49¼ in. x 39 in.

[ILLUSTRATED]

GILBERT STUART (1755-1828) attributed

- 50 *Mrs. Betsy Hartigan*, bust-length, oil on panel 20 in. x 15½ in.

THOMAS SULLY (1783-1872) manner of

- 51 *Beggar and daughter*, half-length figure of elderly unkempt man, with young woman, oil on canvas 30 in. x 25 in.

THOMAS SULLY (1783-1872)

- 52 *Portrait of Mr. Dwyer*, signed with initials T S and dated 1810, oil on canvas 28¾ in. x 24 in.

[ILLUSTRATED]

THOMAS SULLY (1783-1872) attributed

- 53 *Portrait of girl*, study of a young girl filling a pitcher at a stream, copied on reverse new canvas T S 1868 girl filling the pitcher from Owen, oil on canvas 24 in. x 20 in.

THOMAS SULLY (1783-1872) attributed

- 54 *Portrait of Virginia Sully*, half-length, oil sketch on panel (oval) 12½ in. x 9½ in.



No. 52

THOMAS SULLY (1783-1872) attributed

- 55 *Virginia Sully and her two children*, oil sketch on panel 9½ in. x 12½ in.

GEORGE GARDNER SYMONS (1863-1930)

- 56 *Melting snow, rivulet and wooded hills in spring*, signed lower right
Gardner Symons, oil on canvas 18 in. x 24 in.

JOHN TRUMBULL (1757-1843)

- 57 *Portrait of John Floyd*, oil on canvas 24 in. x 20 in.
[ILLUSTRATED]



No. 57



JOHN VANDERLYN (1775-1852)

58 *Portrait of Henry Eckford*, oil on canvas

[ILLUSTRATED]

31 in. x 25 in.



SAMUEL L. WALDO (1783-1861)

59 *Portrait of Moses Hicks Grinnell*, oil on wood panel
[ILLUSTRATED]

30 in. x 24½ in.

JOHN WATSON (1685-1768)

- 60 *Fanny and Rosamond, Daughters of Ebenezer Wilson*, signed and dated on original canvas Miss Fanny, Rosamond, daughters of Fanny and Ebenezer Wilson, N. York, 1717 John Watson pinx, oil on canvas
24½ in. x 30 in.

[ILLUSTRATED]



No. 60

FREDERIC J. WAUGH (1861-1940)

- 61 *Marine, rocks and surf*, initialled lower right W, oil on artist's board
11½ in. x 13¾ in.

BENJAMIN WEST (1738-1820)

- 62 *Christ feeding the multitude*, oil on canvas
51 in. x 89½ in.
[ILLUSTRATED]



No. 62



BENJAMIN WEST (1738-1820)

- 63 *Christ on Mount of Olives*, inscribed reverse *Christ on the Mount of Olives* by Benj. West — at 20 years, oil on canvas 16¾ in. x 23¼ in.
[ILLUSTRATED]



BENJAMIN WEST (1738-1820)

64 *The Last Supper*, oil on canvas

17¾ in. x 23¾ in.

[ILLUSTRATED]

JAMES A. McNEILL WHISTLER (1834-1903)

65 *On the Beach — Ostend*, signed lower left Whistler 1862, oil on canvas
10¾ in. x 17 in.

[ILLUSTRATED]



No. 65











Price \$1.00



AMERICAN PAINTINGS

Lenz Art Gallery

3903 West North Avenue

Milwaukee, Wisconsin 53208



AMERICAN PAINTINGS

from

The Collection of

The Laura Davidson Sears Academy of Fine Arts

of

The Elgin Academy

Elgin, Illinois

Offered for Sale — 1968

Lenz Art Gallery

3903 West North Avenue

Telephone Area Code 414-444-5375

Milwaukee, Wisconsin 53208

WILLIAM H. BEARD (1821-1900)

- 1 *On a spree*, two bears in sandbank, one drunk on his back, with whiskey bottle, signed lower left W. Beard, oil on canvas 12¼ in. x 10¼ in.

ALBERT BIERSTADT (1830-1902) attributed

- 2 *Mountain brook*, oil on canvas 10¼ in. x 16½ in.

JOSEPH BLACKBURN (active 1752-1774)

- 3 *Portrait of Susana Alrich*, oil on canvas (mounted on panel and cradled) 44 in. x 33 in.

[ILLUSTRATED]

RALPH BLAKELOCH (1847-1919)

- 4 *Wood interior*, signed lower left R. A. Blakeloch, oil on wood panel (cradled) 7½ in. x 11½ in.

GEORGE BOUGHTON (1834-1905)

- 5 *Sea breeze*, young girl in white dress looking out across blue water, signed lower right G. H. Boughton, oil on wood panel 21 in. x 12¾ in.



No. 3

DENNIS MALONE CARTER (1827-1881)

- 6 *Portrait of Rufus Griswold*, bust-length, oil on canvas (oval cut)
22 in. x 18 in.

JOHN W. CASILEAR (1811-1893)

- 7 *Landscape*, orchard trees in the foothills, oil on paper 6 in. x 10 in.

JOHN W. CASILEAR (1811-1893)

- 8 *Landscape*, initialed J. W. C. and dated 1889 lower left corner, oil on
canvas 22¼ in. x 40 in.

WILLIAM MERRITT CHASE (1849-1916)

- 9 *Still life*, signed lower right Wm. M. Chase, oil on canvas 17 in. x 24 in.
[ILLUSTRATED]

THOMAS COLE (1801-1848) attributed

- 9A *Landscape*, idyllic scene with figure and cattle, signed Thos. Cole, oil
on canvas 10⅞ in. x 15⅞ in.

CHARLOTTE B. COMAN (1833-1924)

- 10 *Farm house in Holland*, signed lower left C. B. Coman, watercolor and
pastel on paper 11⅞ in. x 12⅞ in.



No. 9

JOHN SINGLETON COPLEY (1737-1815) attributed

- 11 *Siege of Gibraltar*, oil on canvas 62 in. x 93½ in.

RALPH EARL (1751-1801)

- 12 *Young girl with rabbit*, signed lower left R. Earl, oil on canvas
45½ in. x 32¼ in.

[ILLUSTRATED]

CHARLES LORING ELLIOTT (1812-1868)

- 13 *Portrait of Judge William Learned Marcy*, bust-length, signed and dated
lower right Elliott 1843, pen and ink wash on paper 8½ in. x 6¾ in.



No. 12



NATHANIEL EMMONS (1704-1740)

14 *Portrait of man, oil on canvas*

27³/₄ in. x 23¹/₂ in.

[ILLUSTRATED]



ROBERT FEKE (1725-1769)

15 *Portrait of man with spaniel, oil on canvas*
[ILLUSTRATED]

29 in. x 24¾ in.

LILLIAN MATHILDE GENTH (1876-?)

- 16 *On the Hudson*, looking from Rockland Lake, N. Y., at dusk, signed lower right L. M. Genth, oil on canvas 18 in. x 23 in.

WILLIAM HART (1823-1894)

- 17 *Landscape*, scene with figures and cattle, signed lower right Wm. Hart, oil on canvas 11 in. x 17½ in.

GEORGE P. A. HEALY (1813-1894) attributed

- 18 *Stella Dyer*, life-size full-length standing figure of young woman playing violin, signed and dated lower right G. P. Healy 1889, oil on canvas

THOMAS HILL (1829-1908)

- 19 *Yosemite Valley*, signed lower right T. Hill, oil on canvas 8½ in. x 15 in.

WILLIAM MORRIS HUNT (1824-1879)

- 20 *Sunlight and shadow*, woodland scene in autumn, signed lower left W. Hunt, oil on canvas 18 in. x 14 in.



DANIEL HUNTINGTON (1816-1906)

- 21 *Mercy's dream*, literary subject from Bunyan's *Pilgrim's Progress*, oil on canvas (arched top) 35½ in. x 28½ in.

[ILLUSTRATED]



DANIEL HUNTINGTON (1816-1906)

22 *Portrait of Mrs. Brownley Brown*, bust-length, signed lower left D. Huntington, oil on canvas

24 in. x 20 in.

[ILLUSTRATED]



HENRY INMAN (1801-1846)

23 *Portrait of Mr. Dustin*, bust-length, showing original octagonal picture
size 24 in. x 20 in., oil on board 29½ in. x 24¾ in.

[ILLUSTRATED]

GEORGE INNESS (1825-1894) attributed

- 24 *Sunset*, cabin and fields with figures in last light of day, signed lower right G. Inness, oil on panel 9½ in. x 19½ in.

GEORGE INNESS (1825-1894)

- 25 *Landscape*, valley view with cottages on a hillside, signed lower right G. Inness, oil on canvas 12 in. x 15 in.

JOHN WESLEY JARVIS (1780-1839) attributed

- 26 *Portrait John Laurance*, bust length, oil on canvas 30 in. x 24½ in.

EASTMAN JOHNSON (1824-1906)

- 27 *Feeding the turkey*, young woman holding hand high over turkey, signed lower left E. Johnson, oil on canvas 24 in. x 16 in.

EASTMAN JOHNSON (1824-1906)

- 28 *Portrait of Seth Law*, bust length, signed lower right E. J., oil on canvas
27 in. x 22 in.

MATHEW HARRIS JOUETT (1787-1827)

- 29 *Portrait of Major McKenny*, bust length, oil on canvas 30 in. x 25 in.

WILLIAM KEITH (1839-1911)

- 30 *Landscape*, open fields with cows wading in pool, signed lower right W.
Keith, oil on canvas 22 $\frac{3}{4}$ in. x 32 $\frac{3}{4}$ in.

J. F. KENSETT (1818-1872) attributed

- 31 *Landscape*, mountain lake with islands, oil on canvas 9 $\frac{1}{2}$ in. x 13 in.

JOSEPH KYLE (1815-1863)

- 32 *A family group, interior with mother seated, and father standing, and three young children, oil on canvas* 34½ in. x 26¾ in.

[ILLUSTRATED]



No. 32

THOMAS LE CLEAR (1818-1882)

- 33 *Young America*, half-length standing figure of a young newsboy, signed
lower left Thos. LeClear, oil on canvas 20 in. x 16 in.
[See front cover]

EMANUEL LEUTZE (1816-1868)

- 34 *Portrait of Frederich E. Church*, half-length seated figure of the artist,
signed center on book E. Leutze, N. Y., 1865, oil on canvas 36 in. x 28 in.

[ILLUSTRATED]

EDWARD MORAN (1829-1901)

- 35 *Marine*, harbor scene in moonlight, signed lower left Edward Moran, oil
on canvas 20 in. x 16 in.



No. 34



SAMUEL F. B. MORSE (1791-1872)

36 *Portrait of I. W. Forbes*, half-length seated figure of the silversmith, oil
on canvas

30 in. x 25 in.

[ILLUSTRATED]



BASS OTIS (1784-1861)

37 *Portrait of Miss Latrobe*, oil on canvas

[ILLUSTRATED]

29 in. x 24 in.



REMBRANDT PEALE (1778-1860) attributed

38 *Portrait of James Ninde*, oil on canvas

24¾ in. x 19¾ in.

[ILLUSTRATED]



REMBRANDT PEALE (1778-1860) attributed

39 *Portrait of Sarah Ward Ninde*, oil on canvas

24 $\frac{3}{4}$ in. x 19 $\frac{3}{4}$ in.

[ILLUSTRATED]

REMBRANDT PEALE (1778-1860) attributed

- 40 *Mrs. Thomas William Hughes*, oil on canvas 28 $\frac{1}{8}$ in. x 23 $\frac{3}{4}$ in.

PETER PELHAM (1684-1751)

- 41 *Portrait of Rev. Experience Mayhew*, oil on canvas 28 in. x 24 in.
[ILLUSTRATED]

ROBERT EDGE PINE (1730-1788)

- 42 *Portrait of Plunkett Fleeson*, half-length, oil on wood panel 29 in. x 23 $\frac{5}{8}$ in.

MATTHEW PRATT (1734-1805) attributed

- 43 *Portrait of man*, signed right B. F. M. Pratt fecit, oil on wood panel 28 in. x 23 in.



No. 41

HENRY RANGER (1858-1916)

- 44 *Harbor*, scene in Holland with figures and ships, signed lower left H. W. Ranger, oil on artist's board 18 in. x 25½ in.

T. BUCHANAN READ (1822-1872)

- 45 *Sheridan's ride*, signed lower left T. Buchanan Read/Rome 1865, oil on canvas 25¼ in. x 20½ in.

[ILLUSTRATED]



No. 45

WILLIAM READ (1607-1679)

- 46 *Portrait of a man*, inscribed and dated upper left W. R., pinxit 1674, oil
on canvas 10½ in. x 8¼ in.

[ILLUSTRATED]

ADOLPH RINCK (active 1840-1871)

- 47 *Portrait of young man*, bust-length, signed and dated 1840, oil on canvas
27 in. x 21¾ in.



No. 46



SCHUYLER LIMNER (1692-1760)

48 *Portrait of Helena Borgardus Van Buren*, oil on canvas

33¼ in. x 26¼ in.

[ILLUSTRATED]



JOHN SMIBERT (1658-1751)

49 *Portrait of Master John Taylor*, signed and dated lower right Smibert,
1743, oil on canvas 49¼ in. x 39 in.

[ILLUSTRATED]

GILBERT STUART (1755-1828) attributed

- 50 *Mrs. Betsy Hartigan*, bust-length, oil on panel 20 in. x 15½ in.

THOMAS SULLY (1783-1872) manner of

- 51 *Beggar and daughter*, half-length figure of elderly unkempt man, with young woman, oil on canvas 30 in. x 25 in.

THOMAS SULLY (1783-1872)

- 52 *Portrait of Mr. Dwyer*, signed with initials T S and dated 1810, oil on canvas 28¾ in. x 24 in.

[ILLUSTRATED]

THOMAS SULLY (1783-1872) attributed

- 53 *Portrait of girl*, study of a young girl filling a pitcher at a stream, copied on reverse new canvas T S 1868 girl filling the pitcher from Owen, oil on canvas 24 in. x 20 in.

THOMAS SULLY (1783-1872) attributed

- 54 *Portrait of Virginia Sully*, half-length, oil sketch on panel (oval) 12½ in. x 9½ in.



No. 52

THOMAS SULLY (1783-1872) attributed

- 55 *Virginia Sully and her two children*, oil sketch on panel 9½ in. x 12½ in.

GEORGE GARDNER SYMONS (1863-1930)

- 56 *Melting snow, rivulet and wooded hills in spring*, signed lower right
Gardner Symons, oil on canvas 18 in. x 24 in.

JOHN TRUMBULL (1757-1843)

- 57 *Portrait of John Floyd*, oil on canvas 24 in. x 20 in.
[ILLUSTRATED]



No. 57



JOHN VANDERLYN (1775-1852)

58 *Portrait of Henry Eckford*, oil on canvas
[ILLUSTRATED]

31 in. x 25 in.



SAMUEL L. WALDO (1783-1861)

59 *Portrait of Moses Hicks Grinnell*, oil on wood panel 30 in. x 24½ in.
[ILLUSTRATED]

JOHN WATSON (1685-1768)

- 60 *Fanny and Rosamond, Daughters of Ebenezer Wilson*, signed and dated
on original canvas Miss Fanny, Rosamond, daughters of Fanny and
Ebezer Wilson, N. York, 1717 John Watson pinx, oil on canvas
24½ in. x 30 in.

[ILLUSTRATED]



No. 60

FREDERIC J. WAUGH (1861-1940)

- 61 *Marine, rocks and surf*, initialled lower right W, oil on artist's board
11½ in. x 13¾ in.

BENJAMIN WEST (1738-1820)

- 62 *Christ feeding the multitude*, oil on canvas
51 in. x 89½ in.
[ILLUSTRATED]



No. 62



BENJAMIN WEST (1738-1820)

- 63 *Christ on Mount of Olives*, inscribed reverse Christ on the Mount of Olives by Benj. West — at 20 years, oil on canvas 16¾ in. x 23¼ in.
[ILLUSTRATED]



BENJAMIN WEST (1738-1820)

64 *The Last Supper*, oil on canvas

17¾ in. x 23¾ in.

[ILLUSTRATED]

JAMES A. McNEILL WHISTLER (1834-1903)

65 *On the Beach — Ostend*, signed lower left Whistler 1862, oil on canvas
1034 in. x 17 in.

[ILLUSTRATED]



No. 65











Price \$1.00



AMERICAN PAINTINGS

Lenz Art Gallery

3903 West North Avenue

Milwaukee, Wisconsin 53208



AMERICAN PAINTINGS

from

The Collection of

The Laura Davidson Sears Academy of Fine Arts

of

The Elgin Academy

Elgin, Illinois

Offered for Sale — 1968

Lenz Art Gallery

3903 West North Avenue

Telephone Area Code 414-444-5375

Milwaukee, Wisconsin 53208

WILLIAM H. BEARD (1821-1900)

- 1 *On a spree*, two bears in sandbank, one drunk on his back, with whiskey bottle, signed lower left W. Beard, oil on canvas 12¼ in. x 10¼ in.

ALBERT BIERSTADT (1830-1902) attributed

- 2 *Mountain brook*, oil on canvas 10¼ in. x 16½ in.

JOSEPH BLACKBURN (active 1752-1774)

- 3 *Portrait of Susana Alrich*, oil on canvas (mounted on panel and cradled) 44 in. x 33 in.

[ILLUSTRATED]

RALPH BLAKELOCH (1847-1919)

- 4 *Wood interior*, signed lower left R. A. Blakeloch, oil on wood panel (cradled) 7⅝ in. x 11⅛ in.

GEORGE BOUGHTON (1834-1905)

- 5 *Sea breeze*, young girl in white dress looking out across blue water, signed lower right G. H. Boughton, oil on wood panel 21 in. x 12¾ in.



No. 3

DENNIS MALONE CARTER (1827-1881)

- 6 *Portrait of Rufus Griswold*, bust-length, oil on canvas (oval cut)
22 in. x 18 in.

JOHN W. CASILEAR (1811-1893)

- 7 *Landscape*, orchard trees in the foothills, oil on paper 6 in. x 10 in.

JOHN W. CASILEAR (1811-1893)

- 8 *Landscape*, initialed J. W. C. and dated 1889 lower left corner, oil on
canvas 22¼ in. x 40 in.

WILLIAM MERRITT CHASE (1849-1916)

- 9 *Still life*, signed lower right Wm. M. Chase, oil on canvas 17 in. x 24 in.
[ILLUSTRATED]

THOMAS COLE (1801-1848) attributed

- 9A *Landscape*, idyllic scene with figure and cattle, signed Thos. Cole, oil
on canvas 10⅞ in. x 15⅝ in.

CHARLOTTE B. COMAN (1833-1924)

- 10 *Farm house in Holland*, signed lower left C. B. Coman, watercolor and
pastel on paper 11⅝ in. x 12⅞ in.



No. 9

JOHN SINGLETON COPLEY (1737-1815) attributed

- 11 *Siege of Gibraltar*, oil on canvas 62 in. x 93½ in.

RALPH EARL (1751-1801)

- 12 *Young girl with rabbit*, signed lower left R. Earl, oil on canvas
45½ in. x 32¼ in.

[ILLUSTRATED]

CHARLES LORING ELLIOTT (1812-1868)

- 13 *Portrait of Judge William Learned Marcy*, bust-length, signed and dated
lower right Elliott 1843, pen and ink wash on paper 8½ in. x 6¾ in.



No. 12



NATHANIEL EMMONS (1704-1740)

14 *Portrait of man*, oil on canvas

27³/₄ in. x 23¹/₂ in.

[ILLUSTRATED]



ROBERT FEKE (1725-1769)

15 *Portrait of man with spaniel*, oil on canvas
[ILLUSTRATED]

29 in. x 24³/₄ in.

LILLIAN MATHILDE GENTH (1876-?)

- 16 *On the Hudson*, looking from Rockland Lake, N. Y., at dusk, signed lower right L. M. Genth, oil on canvas 18 in. x 23 in.

WILLIAM HART (1823-1894)

- 17 *Landscape*, scene with figures and cattle, signed lower right Wm. Hart, oil on canvas 11 in. x 17½ in.

GEORGE P. A. HEALY (1813-1894) attributed

- 18 *Stella Dyer*, life-size full-length standing figure of young woman playing violin, signed and dated lower right G. P. Healy 1889, oil on canvas

THOMAS HILL (1829-1908)

- 19 *Yosemite Valley*, signed lower right T. Hill, oil on canvas 8½ in. x 15 in.

WILLIAM MORRIS HUNT (1824-1879)

- 20 *Sunlight and shadow*, woodland scene in autumn, signed lower left W. Hunt, oil on canvas 18 in. x 14 in.



DANIEL HUNTINGTON (1816-1906)

- 21 *Mercy's dream*, literary subject from Bunyan's *Pilgrim's Progress*, oil on canvas (arched top) 35½ in. x 28½ in.

[ILLUSTRATED]



DANIEL HUNTINGTON (1816-1906)

22 *Portrait of Mrs. Brownley Brown*, bust-length, signed lower left D. Huntington, oil on canvas

24 in. x 20 in.

[ILLUSTRATED]



HENRY INMAN (1801-1846)

23 *Portrait of Mr. Dustin*, bust-length, showing original octagonal picture
size 24 in. x 20 in., oil on board 29½ in. x 24¾ in.

[ILLUSTRATED]

GEORGE INNESS (1825-1894) attributed

- 24 *Sunset*, cabin and fields with figures in last light of day, signed lower right G. Inness, oil on panel 9½ in. x 19½ in.

GEORGE INNESS (1825-1894)

- 25 *Landscape*, valley view with cottages on a hillside, signed lower right G. Inness, oil on canvas 12 in. x 15 in.

JOHN WESLEY JARVIS (1780-1839) attributed

- 26 *Portrait John Laurance*, bust length, oil on canvas 30 in. x 24½ in.

EASTMAN JOHNSON (1824-1906)

- 27 *Feeding the turkey*, young woman holding hand high over turkey, signed lower left E. Johnson, oil on canvas 24 in. x 16 in.

EASTMAN JOHNSON (1824-1906)

- 28 *Portrait of Seth Law*, bust length, signed lower right E. J., oil on canvas
27 in. x 22 in.

MATHEW HARRIS JOUETT (1787-1827)

- 29 *Portrait of Major McKenny*, bust length, oil on canvas 30 in. x 25 in.

WILLIAM KEITH (1839-1911)

- 30 *Landscape*, open fields with cows wading in pool, signed lower right W.
Keith, oil on canvas 22¾ in. x 32¾ in.

J. F. KENSETT (1818-1872) attributed

- 31 *Landscape*, mountain lake with islands, oil on canvas 9½ in. x 13 in.

JOSEPH KYLE (1815-1863)

32 *A family group, interior with mother seated, and father standing, and three young children, oil on canvas* 34½ in. x 26¾ in.

[ILLUSTRATED]



No. 32

THOMAS LE CLEAR (1818-1882)

- 33 *Young America*, half-length standing figure of a young newsboy, signed
lower left Thos. LeClear, oil on canvas 20 in. x 16 in.
[See front cover]

EMANUEL LEUTZE (1816-1868)

- 34 *Portrait of Frederick E. Church*, half-length seated figure of the artist,
signed center on book E. Leutze, N. Y., 1865, oil on canvas 36 in. x 28 in.

[ILLUSTRATED]

EDWARD MORAN (1829-1901)

- 35 *Marine*, harbor scene in moonlight, signed lower left Edward Moran, oil
on canvas 20 in. x 16 in.



No. 34



SAMUEL F. B. MORSE (1791-1872)

36 *Portrait of I. W. Forbes*, half-length seated figure of the silversmith, oil
on canvas 30 in. x 25 in.

[ILLUSTRATED]



BASS OTIS (1784-1861)

37 *Portrait of Miss Latrobe*, oil on canvas

[ILLUSTRATED]

29 in. x 24 in.



REMBRANDT PEALE (1778-1860) attributed

38 *Portrait of James Ninde*, oil on canvas

24¾ in. x 19¾ in.

[ILLUSTRATED]



REMBRANDT PEALE (1778-1860) attributed

39 *Portrait of Sarah Ward Ninde*, oil on canvas

24¾ in. x 19¾ in.

[ILLUSTRATED]

REMBRANDT PEALE (1778-1860) attributed

- 40 *Mrs. Thomas William Hughes*, oil on canvas 28 $\frac{1}{8}$ in. x 23 $\frac{3}{4}$ in.

PETER PELHAM (1684-1751)

- 41 *Portrait of Rev. Experience Mayhew*, oil on canvas 28 in. x 24 in.
[ILLUSTRATED]

ROBERT EDGE PINE (1730-1788)

- 42 *Portrait of Plunkett Fleeson*, half-length, oil on wood panel
29 in. x 23 $\frac{5}{8}$ in.

MATTHEW PRATT (1734-1805) attributed

- 43 *Portrait of man*, signed right B. F. M. Pratt fecit, oil on wood panel
28 in. x 23 in.



No. 41

HENRY RANGER (1858-1916)

- 44 *Harbor, scene in Holland with figures and ships*, signed lower left H. W. Ranger, oil on artist's board 18 in. x 25½ in.

T. BUCHANAN READ (1822-1872)

- 45 *Sheridan's ride*, signed lower left T. Buchanan Read/Rome 1865, oil on canvas 25¼ in. x 20½ in.

[ILLUSTRATED]



No. 45

WILLIAM READ (1607-1679)

- 46 *Portrait of a man*, inscribed and dated upper left W. R., pinxit 1674, oil
on canvas 10½ in. x 8¼ in.

[ILLUSTRATED]

ADOLPH RINCK (active 1840-1871)

- 47 *Portrait of young man*, bust-length, signed and dated 1840, oil on canvas
27 in. x 21¾ in.



No. 46



SCHUYLER LIMNER (1692-1760)

48 *Portrait of Helena Borgardus Van Buren*, oil on canvas

33¼ in. x 26¼ in.

[ILLUSTRATED]



JOHN SMIBERT (1658-1751)

49 *Portrait of Master John Taylor*, signed and dated lower right Smibert, 1743, oil on canvas 49¼ in. x 39 in.

[ILLUSTRATED]

GILBERT STUART (1755-1828) attributed

- 50 *Mrs. Betsy Hartigan*, bust-length, oil on panel 20 in. x 15½ in.

THOMAS SULLY (1783-1872) manner of

- 51 *Beggar and daughter*, half-length figure of elderly unkempt man, with young woman, oil on canvas 30 in. x 25 in.

THOMAS SULLY (1783-1872)

- 52 *Portrait of Mr. Dwyer*, signed with initials T S and dated 1810, oil on canvas 28¾ in. x 24 in.

[ILLUSTRATED]

THOMAS SULLY (1783-1872) attributed

- 53 *Portrait of girl*, study of a young girl filling a pitcher at a stream, copied on reverse new canvas T S 1868 girl filling the pitcher from Owen, oil on canvas 24 in. x 20 in.

THOMAS SULLY (1783-1872) attributed

- 54 *Portrait of Virginia Sully*, half-length, oil sketch on panel (oval) 12½ in. x 9½ in.



No. 52

THOMAS SULLY (1783-1872) attributed

- 55 *Virginia Sully and her two children*, oil sketch on panel 9½ in. x 12½ in.

GEORGE GARDNER SYMONS (1863-1930)

- 56 *Melting snow*, rivulet and wooded hills in spring, signed lower right
Gardner Symons, oil on canvas 18 in. x 24 in.

JOHN TRUMBULL (1757-1843)

- 57 *Portrait of John Floyd*, oil on canvas 24 in. x 20 in.
[ILLUSTRATED]



No. 57



JOHN VANDERLYN (1775-1852)

58 *Portrait of Henry Eckford*, oil on canvas

[ILLUSTRATED]

31 in. x 25 in.



SAMUEL L. WALDO (1783-1861)

59 *Portrait of Moses Hicks Grinnell*, oil on wood panel
[ILLUSTRATED]

30 in. x 24½ in.

JOHN WATSON (1685-1768)

- 60 *Fanny and Rosamond, Daughters of Ebenezer Wilson*, signed and dated on original canvas Miss Fanny, Rosamond, daughters of Fanny and Ebezer Wilson, N. York, 1717 John Watson pinx, oil on canvas
24½ in. x 30 in.

[ILLUSTRATED]



No. 60

FREDERIC J. WAUGH (1861-1940)

- 61 *Marine, rocks and surf*, initialled lower right W, oil on artist's board
11 $\frac{1}{8}$ in. x 13 $\frac{3}{8}$ in.

BENJAMIN WEST (1738-1820)

- 62 *Christ feeding the multitude*, oil on canvas
[ILLUSTRATED] 51 in. x 89 $\frac{1}{2}$ in.



No. 62



BENJAMIN WEST (1738-1820)

- 63 *Christ on Mount of Olives*, inscribed reverse Christ on the Mount of Olives by Benj. West — at 20 years, oil on canvas 16¾ in. x 23¼ in.
[ILLUSTRATED]



BENJAMIN WEST (1738-1820)

64 *The Last Supper*, oil on canvas

17¾ in. x 23¾ in.

[ILLUSTRATED]

JAMES A. McNEILL WHISTLER (1834-1903)

65 *On the Beach — Ostend*, signed lower left Whistler 1862, oil on canvas
10¾ in. x 17 in.

[ILLUSTRATED]



No. 65









