

Alfred Baker

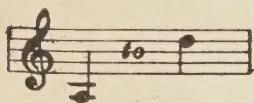
Personal

[Miscellaneous sheet
music]
E19-3.

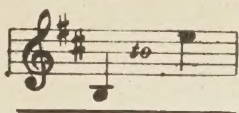
QUEEN'S UNIVERSITY ARCHIVES	
LOCATOR	S169
BOX	1
FILE	1

Robert Linn

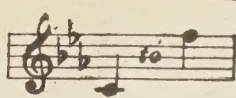
Nº 1 IN C



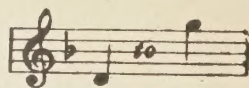
Nº 2 IN D



Nº 3 IN E^b



Nº 4 IN F



TOMMY, LAD!

SONG

THE WORDS BY

EDWARD TESCHEMACHER

The Music by

E. J. MARGETSON.

PRICE 60 CENTS (NET)

BOOSEY & CO.

9 EAST SEVENTEENTH STREET, NEW YORK

AND

295 REGENT STREET, LONDON, ENG.

THIS SONG MAY BE SUNG IN PUBLIC WITHOUT FEE OR LICENSE
THE PUBLIC PERFORMANCE OF ANY PARODIED VERSION, HOWEVER, IS STRICTLY PROHIBITED

PRINTED IN U.S.A.

COPYRIGHT MCMVII BY BOOSEY & CO.

Boosey

TOMMY, LAD!

TOMMY, lad! Tommy, lad!
Though you're scarce a wee year old,
Yet you're long and you're strong,
And your head's a mass of gold;
And you've got a mighty will of your own,
You've got a kind of way,
That will carry you along, I know,
When you face the world one day,
Tommy, lad!

Tommy, lad! Tommy, lad!
You're a funny little chap,
But you'll talk, and you'll walk,
Soon you'll scorn your father's lap;
You'll want a horse, you'll want a ship,
You'll be longing to depart,
But you'll have to wait a long while yet,
* Before I let you start,
Tommy, lad!

Tommy, lad! Tommy, lad!
Oh! a man you soon will be,
And you'll fight for the right,
† Be a better man than me;
For life's a dreary, weary way,
And it's up the hill and down,
But I wish you luck, I wish you joy,
I wish you many a crown,
Tommy, lad!

ED. TESCHEMACHER.

When this song is sung by a lady the following lines may be substituted for those indicated above:—

* Before he'll let you start.

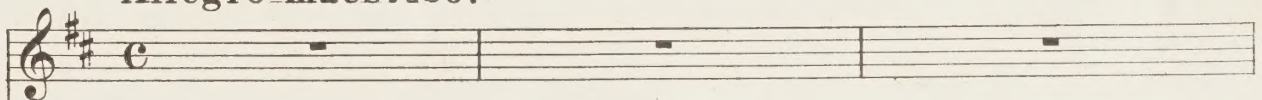
† Be as good a man as he.

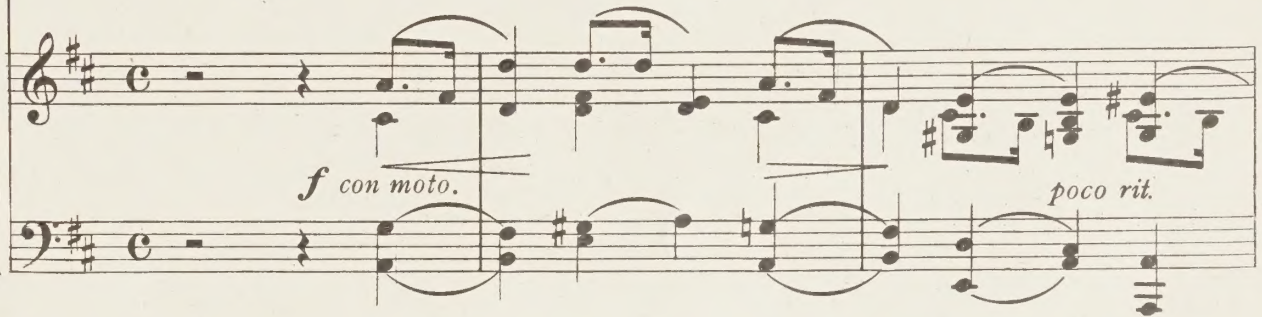
TOMMY, LAD!

Words by
ED. TESCHEMACHER.

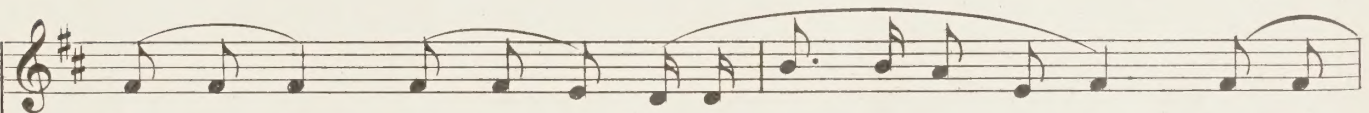
Music by
E. J. MARGETSON.

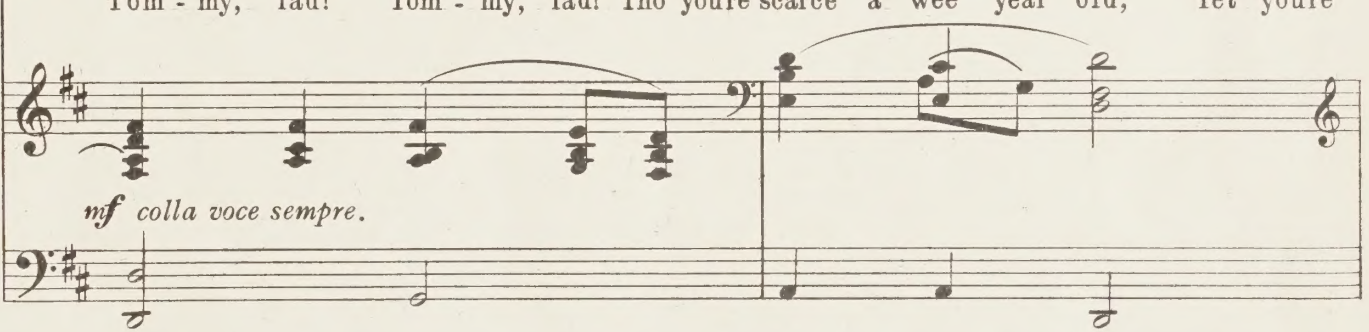
Allegro maestoso.

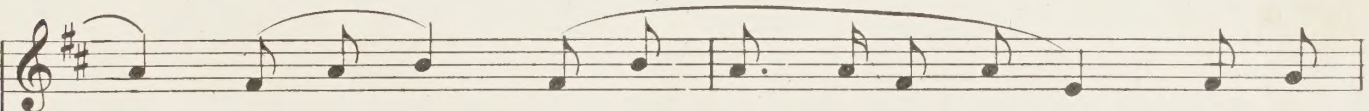
VOICE. 

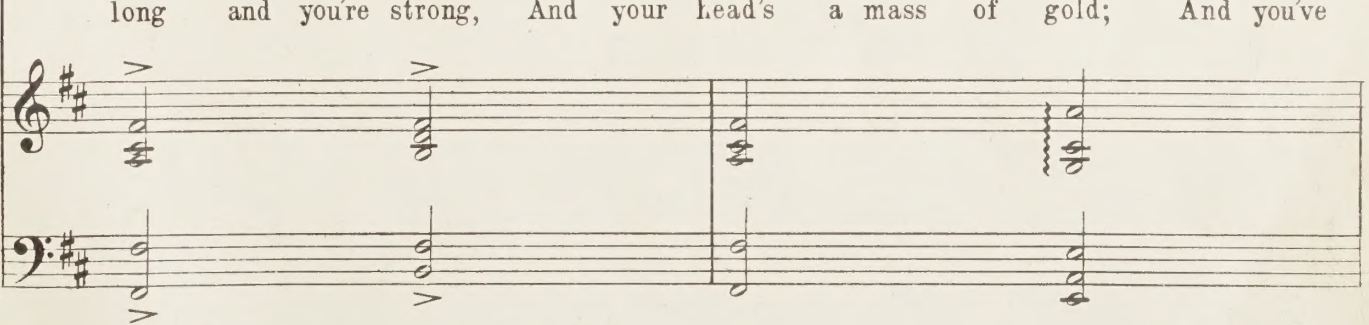
PIANO. 

f con moto. *poco rit.*


Tom - my, lad! Tom - my, lad! Tho' you're scarce a wee year old, Yet you're


mf colla voce sempre.


long and you're strong, And your head's a mass of gold; And you've



got a migh - ty will of your own, You've got a kind of way, That will

car - ry you a - long, I know, When you face the world one day, Tom - my,

lad! Tom - my, lad! Tom - my, lad!

ten.

a tempo.

And. *

poco rit.

Tom - my, lad! Tom - my, lad! You're a fun - ny lit - tle chap, But you'll

ten. talk, and you'll walk, *ten.* Soon you'll scorn your fa - ther's lap; You'll —

want a horse, you'll want a ship, *ten.* You'll be long - ing to de - part, But you'll

have to wait a long while yet, *con molto express. rit.* Be - fore I let you start, Tom - my, *(he'll)*

colla voce. p a tempo.

con tenerezza. ten.

lad! Tom-my, lad! Tom-my, lad!

a tempo. f

*And. **

poco rall.

Tom-my, lad! Tom-my, lad! Oh! a man you soon will be, And you'll

rall.

*And. * And. * And. * And. **

a tempo. rall.

fight for the right, Be a bet-ter man than me; For
(Be as good a man as he;)

f dim.

*And. **

meno mosso. con molto sentimento.

a tempo.

life's a drea - ry, wea - ry way, And it's up the hill and down, But I

p *rall.* *ped.* *

a tempo.

ten.

wish you luck, I wish you joy, I wish you ma - ny a crown, Tom - my,

cresc. *f* *ten.* *ped.* *

rall.

f a tempo.

lad! Tom - my, lad! Tom - my, lad!

colla voce. *a tempo.* *ff* *ped.*

OTHER RECENT SUCCESSFUL SONGS BY EMINENT COMPOSERS

No. 1 in B \flat



No. 2 in C



DUNA

No. 3 in D \flat



No. 4 in E \flat



Music by
JOSEPHINE MCGILL

Words by
MARJORIE PICKTHALL

Sung by **Mr. REINALD WERREN RATH**

Con moto (84 = $\dot{=}$)

mf When I was a lit-tle lad With fol-ly on my lips,— Pain was I, for journeying. All the seas in ships. But now across the

southern swell, Every dawn I hear— The lit-tle streams of Du-na running clear, ————— The lit-tle streams of

p

Copyright MCMXIV by Boosey & Co.

No. 1 in B \flat



MY WEE LITTLE HUT ON THE HILL

Words and Music by
HORACE GLEESON.

Sung by **Mr. JOHN M^c CORMACK**

Lento

On the side of the hill in a bright sunny spot, I have cut out a clearing and built me a cut; And there, while the birds sing their

REFRAIN.
♩ = about 40.

songs in the trees, Sweet clover and buttercups welcome the bees. It's on-ly a hut on the side of the hill, And on-ly a hut it can-be to me till You

Molto lento

Copyright MCMXXXI by Boosey & Co.

Words by
DE BURGH D'ARCY.

A LITTLE COON'S PRAYER

Music by
BARBARA HOPE

Andante
(to be rendered in a dreamy manner.)

I know a lit - tle ba-by coon, As black as an - y coal, I love to hear him erowand croon, the

love-ly lit-tle soul; He plays a-round our ti-ny farm, You'll see him ev-'ry day, He's just the sweet-est

Copyright MCMXXXI by Boosey & Co.

MY TASK

BY

E. L. ASHFORD.

EDITIONS

		NET SELLING PRICE (R. IN U.S.A.)
SOLO	FOR EXTRA HIGH VOICE IN G (G to g)	40 CENTS
SOLO	FOR HIGH VOICE IN F (F to F)	40 CENTS
SOLO	FOR MEDIUM VOICE IN E ^b (E ^b to E ^b)	40 CENTS
SOLO	FOR LOW VOICE IN D (d to D)	40 CENTS
SOLO	FOR EXTRA LOW VOICE IN C (c to C)	40 CENTS
DUET	FOR SOPRANO AND CONTRALTO IN F	40 CENTS
DUET	FOR SOPRANO AND TENOR IN E ^b	40 CENTS
DUET	FOR TENOR AND CONTRALTO IN D ^b	40 CENTS
QUARTET	FOR MIXED VOICES (OCTAVO N ^o 1036)	12 CENTS
QUARTET	FOR MEN'S VOICES (OCTAVO N ^o 2784)	12 CENTS
QUARTET	FOR WOMEN'S VOICES (OCTAVO N ^o 3524)	12 CENTS
CHORUS	FOR S. A. AND B. (OCTAVO N ^o 7012)	12 CENTS
CHORUS	FOR THREE PARTS (S.S.A.) (OCTAVO N ^o 6050)	12 CENTS
CHORUS	FOR TWO PARTS (S.A.) (OCTAVO N ^o 5073)	12 CENTS
ORGAN SOLO		40 CENTS

91 SEVENTH AVE.,
NEW YORK.

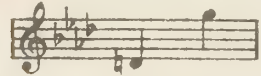
LORENZ
PUBLISHING CO.,
DAYTON, OHIO.
PRINTED IN U.S.A.

218 S. WABASH AVE.,
CHICAGO.

Mr. Shelley, famous composer of sacred music, has in this solo provided the vehicle for splendid singing. Occasionally recitative but usually cantabile, with unusual climactic effects, this selection gives the voice a dignified and restrained opportunity for deeply impressing the audience.

Lord, Thy Will be Done

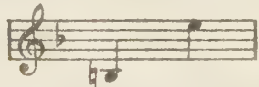
HIGH EDITION



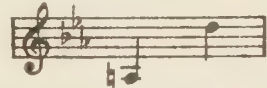
EDITH SANFORD TILLOTSON

SACRED SOLO.

MEDIUM EDITION



LOW EDITION



HARRY ROWE SHELLEY.

Moderato con moto.



Quasi Recitative

When ye pray, say, "Thy King-dom come; Thy will be done on earth as in heav'n"

Cantabile.
a tempo.

When I rise to hail the day, With its un-known, hid-den
pow'rs, Joy or sor-row, peace or fray, Calm or storm-ment

Copyright, 1923, by Lorenz Publishing Co.

NET SELLING PRICE
(IN U.S.A.)
40 CENTS

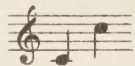
International copyright.

Order direct of the Publisher if your local dealer cannot supply you.

My Task.

First and Second Stanzas by
MAUDE LOUISE RAY,
Third Stanza by
Rev. S.H. PICKUP.

Solo for Extra Low Voice.



E. L. ASHFORD.

Musical notation for the first system, including piano accompaniment and vocal line. The vocal line begins with a rest followed by the word "To". The piano accompaniment features a treble and bass clef with 4/4 time signature. A marking "L.H." is placed above the piano part.

Musical notation for the second system with lyrics: "love some one more dear-ly ev-ry day, To help a wan-d'ring child to find his". The vocal line includes a *cres.* marking. The piano accompaniment continues with treble and bass clefs.

Musical notation for the third system with lyrics: "way, To pon-der o'er a no-ble thought, and pray, And smile when". The vocal line includes dynamic markings *f* and *p*. The piano accompaniment continues with treble and bass clefs.

Musical notation for the fourth system with lyrics: "even - ing falls, And smile when even - ing falls, This is my task.". The vocal line includes markings *piu lento.* and *ad lib.*. The piano accompaniment includes dynamic markings *p*, *dim.*, and *mf.*

To

a tempo.

Detailed description: This system contains the first musical staff. The vocal line (treble clef) has a whole rest followed by a quarter note 'To'. The piano accompaniment (grand staff) begins with a 7-measure rest, then plays a rhythmic pattern of eighth and sixteenth notes. There are dynamic markings like *pp* and *ppp* in the piano part.

cres.

fol-low truth as blind men long for light, To do my best from dawn of day till

Detailed description: This system contains the second musical staff. The vocal line continues with the lyrics 'fol-low truth as blind men long for light, To do my best from dawn of day till'. The piano accompaniment features a long, low bass line with a slur and a crescendo marking *cres.*

f *dim.*

night, To keep my heart fit for His ho-ly sight, And an-swer

Detailed description: This system contains the third musical staff. The vocal line continues with the lyrics 'night, To keep my heart fit for His ho-ly sight, And an-swer'. The piano accompaniment has a dynamic marking of *f* and a decrescendo marking *dim.*

when He calls, And an-swer when He calls, This is my task.

p *dim.* *mf*

Detailed description: This system contains the fourth musical staff. The vocal line concludes with the lyrics 'when He calls, And an-swer when He calls, This is my task.'. The piano accompaniment includes dynamic markings of *p*, *dim.*, and *mf*.

And then my Sav-ior by and by to

ped. *dim.* *

meet, When faith hath made her task on earth com-plete, And

cres.

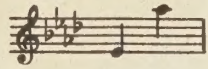
lay my hom-age at the Mas-ter's feet, With-in the jas-per walls,

dim.

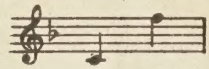
With-in the jas-per walls, This crowns my task.

dim. *mf.*

High Voice in Ab.



Medium Voice in F.



Low Voice in D.



Duet for Two Sopranos
or Two Tenors.



I'M A PILGRIM

NET SELLING PRICE
R. IN U.S.A.

Solo or Duet Arrangements .35

Anthem for Mixed Voices .10
(with Soprano Obligato)

Words by
Mrs. M.S.B. SCHINDLER.

Music by
EDMUND S. LORENZ.

mp

Gracioso. ♩ = 88.

I'm a pil-grim, and I'm a

mp *rall.* *a tempo*

stran - ger, I can tar - ry but a night, I can

tar - ry but a night; Do not de - tain me, for I am

Copyright, 1912, by Lorenz Publishing Co.

Order direct of the Publisher if your local dealer cannot supply you.