

onQ
FEBRUARY 2012



A magazine for Queen's University faculty and staff
PEOPLE, STORIES AND IDEAS



**BREAKING
DOWN
BARRIERS TO
MENTAL HEALTH**

The topic of mental health is forefront in our minds these days, across the country and on our campus. Olympian speed skater and cyclist Clara Hughes describes her personal struggle with mental illness in Bell Canada's Let's Talk national campaign. In September, Principal Daniel Woolf announced the Principal's Commission on Mental Health (CMH) at Queen's that will make recommendations this spring toward a comprehensive university strategy for student mental health and wellness.

We've made tremendous gain with mental illnesses that have, in the past, been so misunderstood and are now being talked about in the most public ways. It is a point of pride that Queen's is participating in this dialogue through the excellent work of Heather Stuart who has just been named Bell Mental Health and Anti-Stigma Research Chair, a world first. You can read about Dr. Stuart and this important initiative in these pages.

In this issue you will also read about four people on campus who will be reaching out as co-chairs of the Campus Community Appeal. In doing so, they will be giving us the opportunity to signal our personal commitment to Queen's future. Hope you enjoy reading about Jill Scott (Languages, Literatures and Cultures), Bob Burge (Education), Monica Stewart (Office of the Vice-Provost and Vice-Principal (Academic) and Tim Fort (Drama) and what's motivating them to seek the support of their colleagues across campus.

As always, I welcome your comments and feedback.

Anita Jansman

TABLE OF CONTENTS

Viewpoint 3

Heather Stuart breaks down barriers to mental health 4

2011 Teaching Award Winners 6-7

Prizes for excellence in research 8

Campus Community Appeal 9

United Way Campaign reaches new heights 9

Employee Spotlights
Krysia Spirydowicz 10
Paul Bowman 11

Diane Schoemperlen,
Writer in Residence 12

offQ
Penina Lam 13

And finally... 15



Do you
recognize
this?

Turn to p. 15 for the answer.

Lorinda Peterson, Associate Director
University Communications

Anita Jansman, Editor
University Communications

Rhonda Monette, Designer
Creative Services

Marketing and Communications.
Fleming Hall
Queen's University
Kingston, ON K7L 3N6
613.533.6000 ext. 77646

ONQ is a magazine for faculty and staff published monthly from September to May by the Department of Marketing and Communications.
queensu.ca/news/onq

EDITORIAL POLICY

Commentary and expert opinions that address issues related to higher education and are consistent with the mandate of *onQ* are welcome to *Viewpoint*. The editor reserves the right to edit or decline submissions based on style, length, appropriateness, relevance, and legal considerations. Maximum 300 words.

Letters are welcome and should address issues directly related to stories that appear in *onQ*. The editor reserves the right to edit or decline submissions based on style, length, appropriateness, relevance, and legal considerations. Maximum 200 words.

All submissions must be original and addressed to the editor, and include your name, affiliation and phone number. Send submissions to anita.jansman@queensu.ca by the 15th of each month, to be considered for publication in the next issue.

ADVERTISING AND CIRCULATION COORDINATOR

Peter Gillespie
613.533.6000 ext. 75464

If you would prefer to receive *onQ* electronically, please notify us at advert@queensu.ca

ON THE COVER: Heather Stuart, Bell Mental Health and Anti-Stigma Research Chair, Community Health and Epidemiology.

FINDING BETTER WAYS TO ACCOMMODATE STUDENTS WITH DISABILITIES

BY JEANETTE PARSONS, DISABILITY SERVICES OFFICE

The state of mental health among our students has generated a lot of discussion in recent months, focusing much needed attention on support services such as counselling and residence programming and the need for better awareness. As Disability Services Advisor, I believe that the Disability Services Office (DSO) must play a bigger role in this discussion.

Nearly 30 per cent of students registered with the DSO this year self-identified as having a mental health condition, making them the largest group of students who use our services. Another 14 per cent self-identify as having more than one disability, many being students with mental health conditions. Furthermore, students with disabilities such as learning disabilities, attention-deficit/hyperactive disorder and chronic illness report much higher levels of stress, anxiety and depression than their non-disabled peers. With nearly 800 students accessing our services, any proposed mental health strategy must consider the work of the DSO.

The DSO is mandated to oversee the university's legislative obligation to

accommodate students with disabilities. This means preserving their right to dignity and independence while promoting their participation and integration in the university community. A fundamental principle in this process is striving to *accommodate* the student's disability, not fix or minimize it.

When first meeting with students with mental health diagnoses, advising staff will confirm that they are connected with a health care provider or a counsellor and frequently refer them to other support services on campus. However, we also stress to students that they *and their disability* are welcomed at Queen's and that making reasonable modifications to the environment is part of our obligation to them.

For students with mental health diagnoses, such modifications could include extra time during exams, or spacing exam times to encourage recovery in between. Extensions on assignments are helpful in coping with fluctuating productivity, often due to changes in the condition or medication adjustments. Other accommodation options include a reduced course load and, on occasion,



Jeanette Parsons

supporting a student's need for a complete study break as they recover from episodic periods of ill health.

The current discussion on mental health is focused on its causes and possible fixes. To be inclusive, however, it must be broadened. Students registered

with the DSO are often dealing with mental health diagnoses that could be with them for their entire academic career or longer. Their need is often less about what can be done to make them "better" and more about welcoming them *and* accommodating their disability. **Q**

onQ welcomes commentary and expert opinions that address issues related to higher education. Email anita.jansman@queensu.ca or submit via www.queensu.ca/news/onq. Maximum 300 words.

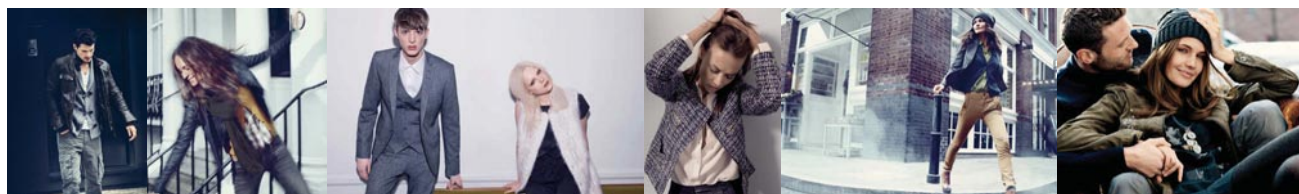


CHRIS JAMES
MENS/WOMENS
DEFINING CONTEMPORARY STYLE

Embrace accessible luxury with our interesting and sophisticated focus on quality, versatility and an edgy yet enduring sense of style.

Modern Contemporary Classics with a European Sensibility.

253 Ontario Street, Kingston, Ontario • 613.541.0707 • www.chrisjameskingston.com





HEATHER STUART BREAKS DOWN BARRIERS TO MENTAL HEALTH

World's first chair
in Mental Health
and Anti-Stigma

As a young girl, Heather Stuart grew up in an environment that influenced her career path. Her family lived on-site at psychiatric hospitals in Ontario because of her mother's positions in hospital administration. Dr. Stuart, Queen's inaugural Bell Canada Mental Health and Anti-Stigma Research Chair, gained a compassionate understanding of mental illness through her early interactions with the hospitals' patients.

"There are few people in Canada who have actually grown up on the grounds of mental hospitals. I would play there and never thought twice about interacting with patients. I didn't know I was supposed to be afraid of them. Nobody told me," she says.

The image to the right was created by a person experiencing a mental illness and was commissioned in 2003 for the Together Against Stigma Conference held in Kingston. Participants were asked to present their perspective on the theme, Open the Doors.

Unfortunately, misinformation about people with mental illnesses persists in society. Dr. Stuart has made it her mission to dismantle the barriers that stand in the way of treatment, services and research. After earning degrees in sociology and epidemiology, and equipped with a strong sense of social justice, she found a natural home in the complex and often misunderstood field of mental health.



“Mental health programs are always the last funded and the first cut,” she says. “Very little data have been collected on which to base policy decisions because of stigma. Policy-makers and researchers for other disease categories can access decades of basic survey information collected through Statistics Canada, but the national agency only began collecting data on mental health in 2001.”

Commission on Mental Health at Queen's

In September 2011, Principal Woolf named David Walker, former dean of the Faculty of Health Sciences, Ann Tierney, Vice-Provost and Dean of Student Affairs, Lynann Clapham, Associate Dean (Academic), Faculty of Engineering and Applied Science, Jennifer Medves, Vice-Dean, Faculty of Health Sciences and Director of the School of Nursing, and Roy Jahchan, MPA '11 / Law '13, to the **Commission on Mental Health at Queen's**.

“The commission is looking at trends, best practices, and how student mental health needs are currently being addressed,” says Principal Woolf. “As a community, we must be proactive in seeking to provide a teaching and learning environment that supports our students in all facets of their lives, including their mental health. This commission is an important additional step in this ongoing process.”

The commission continues to meet weekly and invites anyone interested in providing input to get in touch at cmh@queensu.ca. The commission is expected to make recommendations this spring on a comprehensive university strategy towards student mental health and wellness.

www.queensu.ca/cmh

After establishing her reputation as a leading researcher at Queen's and senior consultant to the Mental Health Commission of Canada, Dr. Stuart caught the attention of Mary Deacon, Chair of Bell Canada's Mental Health Initiative, which promotes mental health across Canada. Ms Deacon began discussions with Dr. Stuart and Queen's administrators that eventually led to the creation of a world first – a research chair that would increase awareness and understanding of the harmful stigma associated with mental illnesses.*

“Stigma is the reason two-thirds of all those living with a mental illness will not seek help. By enabling Queen's to expand its anti-stigma program, we are building on Bell's successful Let's Talk campaign and other initiatives to reduce stigma, support research and improve mental health care in communities across Canada,” says Ms Deacon.

According to Dr. Stuart, stigma impedes mental health policy development and critical research that leads to the care and cure of mental illnesses.

The Mental Health Commission of Canada, programs such as Bell's Mental Health Initiative, and political pressure have all played a significant role in Statistics Canada developing a module to assess stigma experienced by people with mental illness. Dr. Stuart believes that in her role as chair she will foster similar partnerships and initiatives to affect positive change. She is encouraged by Principal Daniel Woolf's Commission on Mental Health, which demonstrates Queen's commitment to better addressing mental health related issues among students. (See sidebar)

Over the next five years as chair, Dr. Stuart will be able to expand her research and supervise and mentor research trainees. She will also contribute to peer-reviewed journals and present regularly at conferences. In addition, the chair sponsors yearly research lectureship on mental health and anti-stigma research at Queen's. **Q**

www.queensu.ca/news

www.bell.ca/letstalk

**Bell Canada's \$1 million gift will fund the Bell Mental Health and Anti-Stigma Research Chair for five years.*



Mary Deacon, Chair of Bell Canada's Mental Health Initiative, announces Bell Canada Mental Health and Anti-Stigma Research Chair at Queen's on February 7.

2010-11 TEACHING AWARD WINNERS



Queen's teaching excellence is recognized by various awards at the departmental, institutional, provincial, and national levels. In attendance to receive their awards on January 16 at Ban Righ Hall: Kevin Deluzio, Jonathan Rose, Eric Rapos, Anthony Noble, Nicholas Graham, Karen Fredrickson, King Luu, Gabriel Walton, George Bevan, Brian Frank, Guy Narbonne, Vinay Singh, Neil Hoult, Brenden MacGillivray, Charles Beach, Vanessa Mann, Darryl Robinson, Eric Keske, Erik Knutsen, Niraj Kumar, Bob MacGaughey, Kate Harkness, Frank Secretain, Mary Louise Adams, Peter Ellis, Chris Bongie, Charles Molson, Kimi Hamada, Yan Fei Liu, Steven Moore, Alan Ableson, Amish Servansing, Linda O'Connor, Stephanie Lind.

CHRISTOPHER KNAPPER AWARD OF EXCELLENCE IN TEACHING ASSISTANCE

(Alma Mater Society)

- 2010/2011 Gabriel Walton, Geological Engineering
2010/2011 Kimi Hamada, English

FRANK KNOX AWARD (Alma Mater Society)

- 2010/2011 Karen Fredrickson, Music
2010/2011 Judith Fisher, Drama

ALUMNI AWARD FOR EXCELLENCE IN TEACHING (Alumni Affairs)

- 2011 George Bevan, Classics

CHANCELLOR A. CHARLES BAILLIE TEACHING AWARD (Centre for Teaching and Learning)

- 2010/2011 Brian Frank, Electrical and Computer Engineering

SOCIETY OF GRADUATE AND PROFESSIONAL STUDENTS TEACHING ASSISTANT/TEACHING FELLOW EXCELLENCE AWARD (Society of Graduate and Professional Students)

- 2010/2011 Niraj Kumar, Biology

AWARD FOR EXCELLENCE IN GRADUATE STUDENT SUPERVISION (School of Graduate Studies and Research)

- 2011 Virginia Walker, Biology
2011 Charles Beach, Classics

FACULTY OF APPLIED SCIENCE

APPLIED SCIENCE FIRST YEAR TEACHING AND LEARNING AWARD (Applied Science)

- Fall 2010 John Hanes, Geological Sciences and Geological Engineering
Winter 2011 Anthony (Tony) Noble, Engineering Physics and Astronomy

CIVIL ENGINEERING TEACHING ASSISTANT AWARD (Civil Engineering)

- Fall 2010 Eric Martin,
Winter 2011 Vanessa Mann

CIVIL ENGINEERING TEACHING AWARD (Civil Engineering)

- 2010/2011 Neil Hoult

ELECTRICAL AND COMPUTER ENGINEERING TEACHING AWARD (Electrical and Computer Engineering)

- 2010/2011 Il-Min Kim, 2nd year winner
2010/2011 Abdullah Kumar, 3rd year winner
2010/2011 Yan-Fei Liu, 4th year winner

TEACHER ASSISTANT AWARD

- (Electrical and Computer Engineering)
2010/2011 Andrew Dickson, 2nd year winner
2010/2011 Curtis Layne, 3rd year winner
2010/2011 Amish Servansing, 4th year winner

EDUCATIONAL EXCELLENCE TEACHING ASSISTANT AWARD (Engineering Society)

- 2010/2011 Gabe Walton

GOLDEN APPLE AWARD (Engineering Society)

- 2010/2011 Kevin Deluzio, Mechanical and Materials Engineering
Neil Hoult, Civil Engineering

GOLDEN PILLAR AWARD (Engineering Society)

- 2010/2011 Mining Office Staff:
Kate Cowperthwaite
Tina McKenna
Wanda Badger

SILVER WRENCH (Mechanical Engineering Club)

- 2010/2011 Dr. Ronald J. Anderson, Mechanical Engineering

BRONZE WRENCH (Mechanical Engineering Club)

- 2010/2011 Frank Secretain, Mechanical Engineering

FACULTY OF ARTS AND SCIENCE

W.J. BARNES TEACHING EXCELLENCE AWARD FOR ARTS AND SCIENCE UNDERGRADUATE SOCIETY (Arts and Science Undergraduate Society)

- 2010/2011 Charles Molson, Mathematics and Statistics
2010/2011 Guy Narbonne, Geological Sciences and Geological Engineering
2010/2011 Jonathan Rose, Political Studies

BIOLOGY AWARD FOR EXCELLENCE (DEMONSTRATORS) (Biology)

- 2010/2011 Andrew Lowles, Biology

BIOLOGY DEPARTMENT STUDENT COUNCIL AWARD OF EXCELLENCE IN TEACHING

(Biology)

- 2010/2011 Steve Lougheed, Biology

DAVID THOMAS TEACHING ASSISTANT AWARD (Chemistry)

- 2010/2011 Brenden MacGillivray

DEPARTMENT OF CHEMISTRY AWARD FOR EXCELLENCE IN TEACHING ASSISTANCE (Chemistry)

- 2010/2011 Eric Keske

DIN LAL TEACHING ASSISTANT AWARD (Chemistry)

- 2010/2011 Gurpaul Kochhar

FISHER SCIENTIFIC TEACHING AWARD (Chemistry)

- 2010/2011 Stephen Walker

GRADUATING CLASS AWARD FOR EXCELLENCE IN TEACHING CHEMISTRY (Chemistry)

- 2010/2011 Richard Oleschuk

AGILENT TECHNOLOGIES EXCELLENCE IN TEACHING ASSISTANT AWARD FOR 3RD YEAR CHEMISTRY LABORATORY (Chemistry)

- 2010/2011 Shelley McArthur

WILLIAM PATRICK DOOLAN AWARD (Chemistry)

- 2010/2011 Julian Kwok

EXCELLENCE IN TEACHING ASSISTANCE (School of Computing)

- 2010/2011 Eric Rapos

HOWARD STAVELEY TEACHING AWARD (School of Computing)

- 2010/2011 Nicholas Graham

DEPARTMENT OF DRAMA'S FACULTY AWARD OF EXCELLENCE (Drama)

- 2010/2011 Judith Fisher

MEADOWBROOK

DENTAL CENTRE

www.meadowbrookdentalcentre.com

Family Dentistry, Dental Implants, Invisalign, Sedation and Dental Surgery

DR. SCOTT BROWN

DR. KATHERINE MAJEWSKA

DR. SCOTT PETERSON

DR. GOKHAN SHEVKET

NEW PATIENTS ALWAYS WELCOME!

542 Armstrong Road Kingston, ON K7M 7N8 • (613) 546-6865

TEACHING AWARD WINNERS *continued*

ENGLISH DEPARTMENT STUDENT COUNCIL

2010/2011 Chris Bongie

SCHOOL OF ENVIRONMENTAL STUDIES STUDENT'S CHOICE PROFESSOR OF THE YEAR AWARD

(School of Environmental Studies

Department Student Council)

2010/2011 Steven Moore

SCHOOL OF ENVIRONMENTAL STUDIES STUDENT'S CHOICE TEACHING ASSISTANT AWARD

(School of Environmental Studies

Department Student Council)

2010/2011 Lyn Garrah

GENDER STUDIES TEACHING AWARD

(Gender Studies)

2010/2011 Dana Olwan

GEOGRAPHY DSC AWARD FOR EXCELLENCE IN TEACHING ASSISTANCE

(Geography)

2010/2011 Kasey Kathan

JULIAN SZEICZ AWARD FOR EXCELLENCE IN TEACHING

(Geography)

2010/2011 Scott Lamoureux

HEALTH STUDIES DSC EXCELLENCE IN TEACHING AWARD FOR HEALTH COURSES

(School of Kinesiology and Health Studies)

2010/2011 Mary Louise Adams

PHYSICAL AND HEALTH EDUCATION STUDENT ASSOCIATION (PHESA) '88 TEACHING AWARD

(School of Kinesiology and Health Studies)

2010/2011 Bill Sparrow (Activities)

2010/2011 Brenden Gurd (Theory)

SCHOOL OF MUSIC AWARD FOR EXCELLENCE IN TEACHING

(School of Music)

2010/2011 Stephanie Lind, Music

UNDERGRADUATE AWARD FOR EXCELLENCE IN TEACHING PHYSICS

(Physics)

2010/2011 Geoffrey Lockwood

GRADUATE TEACHING AWARD IN PSYCHOLOGY

(Psychology)

2010/2011 Kate Harkness, Psychology

TEACHING ASSISTANT PRIZE IN PSYCHOLOGY

(Psychology)

2010/2011 Julia Burbudge, Psychology

UNDERGRADUATE TEACHING AWARD IN PSYCHOLOGY

(Psychology)

2010/2011 Caroline Pukall, Psychology

SCHOOL OF BUSINESS

COMMERCE '89 PROFESSOR - STUDENT LIFE AWARD

2010/2011 David McConomy, Business

COMMERCE SOCIETY TEACHING AWARD

2010/2011 David McConomy, Business

EXECUTIVE MBA INSTRUCTOR OF THE YEAR AWARD

2010/2011 John Moore, Queen's Executive MBA

2010/2011 Marc Busch, Cornell-Queen's Executive MBA

2010/2011 Jay Handelman, Queen's Accelerated MBA

QUEEN'S MBA INSTRUCTOR OF THE YEAR AWARD

2010/2011 John Moore, MBA 811,

Financial Accounting

FACULTY OF EDUCATION

GOLDEN APPLE AWARD

2010-11 Bob McGaughey, Education

Paul Deir, Education

ROSE A. FREEMAN MEMORIAL AWARD

2010-11 King Luu, Education

Peter Bowers, Education

FACULTY OF HEALTH SCIENCES

EDUCATION AWARD

SCHOOL OF MEDICINE

AESCULAPIAN LECTURESHIP AWARD

(School of Medicine)

2010/2011 Dr. Conrad Reifel, Anatomy

2010/2011 Dr. Michael Sylvester, Family

2010/2011 Dr. Michael Adams, Pharmacology

2010/2011 Dr. Stephanie Baxter,

Ophthalmology

2010/2011 Dr. Sherif El-Delfrawy,

Ophthalmology

2010/2011 Dr. David Lee, Hematology

2010/2011 Dr. Chris Parker, Respirology

2010/2011 Dr. Robyn Houlden, Endocrinology

CLINICAL SKILLS TEACHERS IN THE SCHOOL OF MEDICINE AWARD OF EXCELLENCE IN TEACHING

(School of Medicine)

2010/2011 Henry Averno, Rheumatology, Term 1

2010/2011 Jim Biagi, Medicine, Term 1

2010/2011 Jay Engel, General Surgery, Term 1

2010/2011 Christopher Frank, Medicine, Term 1

2010/2011 Peter Froud, Oncology/Hematology,

Term 1

2010/2011 Elizabeth Grier, Family medicine,

Term 1

2010/2011 Cherie Jones-Hiscock,

Psychiatry, Term 1

2010/2011 Melanie Jaeger, Medicine, Term 1

2010/2011 Heather Ostic, Family Medicine,

Term 1

2010/2011 Ken Reid, Surgery, Term 1

2010/2011 Peggy Robertson, Family Medicine,

Term 1

2010/2011 Rene Allard, Anesthesiology, Term 2

2010/2011 Henry Averno, Rheumatology,

Term 2

2010/2011 Angela Cheung, Medicine, Term 2

2010/2011 Linda O'Connor, Family Medicine,

Term 2

2010/2011 Louise Rang, Emergency Medicine,

Term 2

2010/2011 Peggy Robertson, Family Medicine,

Term 2

2010/2011 Paul Dungey, Emergency Medicine,

Term 2B

2010/2011 Roy Ilan, Internal Medicine, Term 2B

2010/2011 Waitak Kong, Medicine, Term 2B

2010/2011 Michael O'Connor, Emergency

Medicine, Term 2B

2010/2011 Arawn Therrien, Family Medicine,

Term 2B

2010/2011 Diane Lu, Medicine, Term 2B

2010/2011 Peter Ellis, Neurosurgery, Term 2C

2010/2011 B. Farnell, Surgery, Term 2C

2010/2011 Rupa Patel, Family Medicine,

Term 2C

2010/2011 Stephen Steele, Urology, Term 2C

2010/2011 Roy Ilan, Internal Medicine, Term 2C

2010/2011 Linda O'Connor, Family Medicine,

Term 2C

2010/2011 Sanjay Ramachandran, Family

Medicine, Term 2C

2010/2011 Gavin Shanks, Physical Medicine

and Rehabilitation, Term 2C

E-WARD

(School of Medicine)

2010/2011 Jason Booy

2010/2011 Jonathan C. Lau

PAIRO EXCELLENCE IN CLINICAL TEACHING AWARD

(School of Medicine)

2010/2011 Diane Lu, Family Medicine

PAIRO EXCELLENCE IN UNDERGRADUATE TEACHING BY A RESIDENT

(School of Medicine)

2010/2011 Russell Lam, Pediatrics

W. FORD CONNELL AWARD FOR EXCELLENCE IN TEACHING

(School of Medicine)

2010/2011 Christopher Smith, Internal Medicine

RESIDENT PRIZE FOR EXCELLENCE IN UNDERGRADUATE TEACHING

(Department of Surgery)

2010/2011 Russell Lam, Pediatrics

SCHOOL OF NURSING NURSING '84 AWARD FOR EXCELLENCE IN CLINICAL TEACHING

2010-11 Laurie Gedcke-Kerr, Nursing

REDDICK AWARD FOR EXCELLENCE IN NURSING EDUCATION

2010-11 Year I Vinay Singh

Year II Linda Robb-Blenderman

Year III Laurie Gedcke-Kerr

Year IV Melissa Raby

SCHOOL OF REHABILITATION THERAPY

BLUE STAR AWARD FOR TEACHING EXCELLENCE

2010-11 Megan Edgelow,

Occupational Therapy

Elizabeth Sled, Physical Therapy

FACULTY OF LAW LAW STUDENTS' SOCIETY (SESSIONAL) SPECIAL LECTURER AWARD

Winter 2010 Bernie Adell, Law

Fall 2010 Blair McKenzie, Law

LAW STUDENTS' SOCIETY TEACHING EXCELLENCE AWARD

Winter 2010 Darryl Robinson, Law

Fall 2010 Erik Knutsen, Law

THE GRIZZLY GRILL

'Redefining Casual Dining'

**Perfect 'AAA' Steaks
Nightly Alberta Prime Rib
Sunday Brunch Buffet**

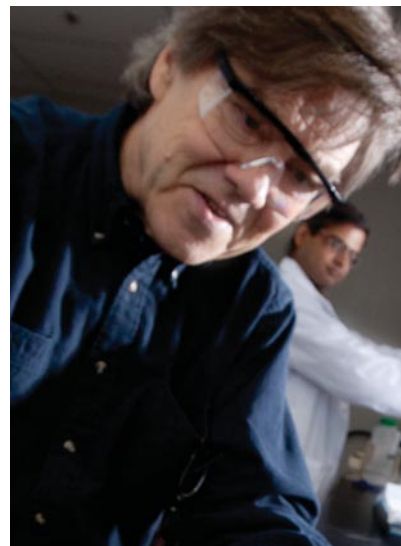
Official sponsor of Queen's Athletics.

Present your
10% DISCOUNT and DONATION CARD
at any Hub Restaurant...enjoy a 10% food discount
and we'll match the amount as a donation to
Queen's Athletics.

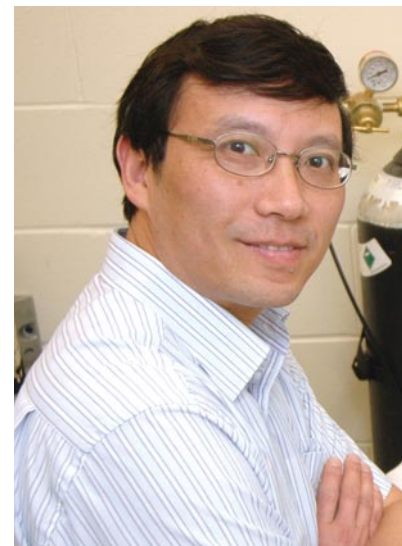
THE GRIZZLY GRILL | Ale HOUSE CANTEN | THE BRASSerie 1908 | QUEENS ATHLETICS

395 Princess | 613-544-7566 | grizzlygrill.ca

PRIZES FOR EXCELLENCE IN RESEARCH AWARDED TO TWO SCIENTISTS



Victor Snieckus (Chemistry)



Zongchao Jia (School of Medicine)

Victor Snieckus and Zongchao Jia are the recipients of the 2011 Queen's University Prize for Excellence in Research. The \$5,000 prize recognizes researchers who have made major contributions in their field while at Queen's.

Victor Snieckus is the Bader Chair in Organic Chemistry and Professor Emeritus in the Department of Chemistry. He has earned international recognition for the commercial application of his work in the pharmaceutical and agrochemical industries. Dr. Snieckus's discovery of new reactions in aromatic and heteroaromatic synthetic chemistry are of great significance in pharmaceutical drug development as 80 per cent of medicinal agents are comprised of these two classes of organic molecules. Additionally, Dr. Snieckus has established Snieckus Innovations, an institute to synthesize small molecules for the pharmaceutical industry. He has also mentored and trained 71 PhD and master's students throughout the course of his career.

In 1995, Zongchao Jia joined Queen's faculty as a structural biologist. He is a professor in the Department of Biomedical and Molecular Sciences, a Canada Research Chair in Structural Biology, and a Killam Research Fellow. Dr. Jia's expertise is in protein X-ray crystallography, a powerful tool capable of revealing atomic details of protein. At Queen's, he has published an average of 11 works each year, and to date has 194 peer-reviewed research publications appearing in high quality journals. He has received operating funding from the Canadian Institutes of Health Research/Medical Research Council since 1996 and the Natural Sciences and Engineering Research Council of Canada since 1999. The impact of Dr. Jia's research in protein structure-function is profound. He has also had a significant role in training large numbers of students in X-ray crystallography.

Drs. Snieckus and Jia will be delivering public lectures on Tuesday, March 20, 2012 at Chernoff Auditorium. www.queensu.ca/vpr

CHIEN-LICIOUS

Le Chien Noir
BISTRO

We are featuring a 3 course dinner menu for only
\$27
and special lunch items for only
\$11

Great food! Great Deals! available Sunday ~ Wednesday

Celebrate the Season!

69 Brock Street 613-549-5635 lechiennoir.com

le chien noir @chiennoirbistro

We cannot accept promotional gift certificates
(including those purchased at COSTCO) or coupons as payment for these menus.

VOLUNTEERS VITAL FOR SUCCESS OF CAMPUS COMMUNITY APPEAL

BY MARK KERR

Bob Burge (Education) and Jill Scott (Languages, Literatures and Cultures) are focused on recruiting new volunteers for this year's Queen's Campus Community Appeal.

"We are interested in talking with people who are at different points in their Queen's career," says Mr. Burge, an incoming Appeal co-chair and registrar of the Faculty of Education. "We want to raise awareness among new employees and get new ideas from people who have been here a while. We also plan to approach people who are nearing retirement and ask them to assist with the appeal as a way of giving back to Queen's and leaving a legacy."

The Campus Community Appeal is the university's annual fundraising effort directed to all staff, faculty and retirees. Volunteers play a vital role by discussing the appeal with friends and colleagues and spreading the word around campus in enthusiastic and creative ways.

Dr. Scott notes that faculty members serve on a number of committees and boards as part of their service responsibilities. She encourages her colleagues to see the Campus Community Appeal




Jill Scott, Tim Fort, Monica Stewart, Bob Burge

as another way of making a positive impact at the university.

"The Campus Community Appeal makes a lot of the great things at the university possible," she says. "By giving your time and gifts, you are investing in the future and values of the institution."

Dr. Scott, Mr. Burge and fellow co-chairs Monica Stewart (Office of the Vice-Provost and Vice-Principal (Academic)) and Tim Fort (Drama) are eager to hear why faculty and staff

support the university's diverse initiatives. Some of those stories are included in this year's appeal video that can be viewed at www.givetoqueens.ca. The website also helps individuals find an area of the university that matches their interests.

If you are interested in volunteering for the Queen's Campus Community Appeal 2012, contact coordinator Leigh Kalin by email leigh.kalin@queensu.ca or at ext. 75137. 

www.givetoqueens.ca/communityappeal

QUEEN'S UNITED WAY CAMPAIGN REACHES NEW HEIGHTS

BY MARK KERR

The Queen's community has surpassed its United Way campaign fundraising goal of \$320,000.


"The generosity of the Queen's community for United Way is remarkable – and inspirational! Thanks to everyone who gave for making such a difference in the lives of those who need assistance most," says staff co-chair Shelley Aylesworth-Spink. "We not only met and exceeded our fundraising goal this year, but we are providing even more support to the

programs and services that help one out of every two people in our community."

Queen's faculty, staff and retirees raised nearly \$324,000, topping last year's total of \$310,000. The Alma Mater Society United Way Committee is tabulating the funds raised by students, and that amount will be included in the final total.

"The hundreds of 'everyday heroes' across the Queen's community have helped the United Way serving Kingston, Frontenac, Lennox and Addington com-

munity campaign achieve its 13th record-breaking total of \$3.327-million," says Les Herr, Chair, United Way Campaign.

The local United Way funded 106 critical programs and services that helped over 74,000 people in 2010. The United Way also mobilizes community resources to address issues such as homelessness, poverty, and at-risk children and youth. It also strengthens the voluntary sector by providing leadership development services to not-for-profit organizations. 



 JEN STOREY DESIGNS

www.dwellboutique.ca
Locally owned and operated

207 Wellington Street
Downtown Kingston!
ph. 613.542.5425

EMPLOYEE SPOTLIGHT

KRYSIA SPIRYDOWICZ

BY ALYSE KOTYK



Krysia Spirydowicz often has the opportunity to work with unique and valuable artifacts from around the world as director of the Queen's Art Conservation Program and associate professor of artifacts conservation. Last Summer, she lent her expertise to a truly remarkable set of artifacts. She was the first Canadian invited to the Birmingham Museum to work on an impressive collection of Anglo-Saxon pieces known as the Staffordshire Hoard.


"I often talk to my students about Anglo-Saxon metalwork but this is the first opportunity I have had to work on it," says Professor Spirydowicz. "This experience has given me a better understanding of metalworking techniques."

A farmer near Lichfield in Staffordshire, England discovered the hoard in 2009 with a metal detector. It is the first time that such a large collection of Anglo-Saxon gold has been found and its worth is estimated at \$5.4-million. Widespread interest in this discovery resulted in most pieces being put on display soon after their excavation. It is not until recently that the pieces were appropriately cleaned and studied.

The project to preserve these objects received National Geographic funding, part of which allowed professionals from other countries to participate in the treatment of the pieces.

While in Birmingham, Professor Spirydowicz's role included cleaning the top 100 objects for display in the National Geographic Museum in Washington, D.C. This meticulous work could only be done under microscope in order to appreciate the fine details of the pieces' intricate filigree, delicate garnets and gold foil.

"You might think of the Anglo Saxons as being rather primitive but in terms of their metalwork they were incredibly sophisticated," says Professor Spirydowicz.

In addition to teaching responsibilities at Queen's and her work in Birmingham, Professor Spirydowicz has also worked in Israel, Italy and Iran. 

Would you like to suggest someone for Employee Spotlight? Email anita.jansman@queensu.ca

30% SOLD

Anna Lane
downtown condos

Register **on-line**
for our next
Sales Information Session

Sales Office: 248 Wellington St.
Open Wed. - Fri., 10 am - 4 pm

www.annalane.ca  **613.546.8252**
FOR HOMES | EASTERN ONTARIO

A Downtown Lifestyle You Can Afford

EMPLOYEE SPOTLIGHT

PAUL BOWMAN




Paul Bowman, career coach for the Master of Business Administration (MBA) program at the Queen's School of Business, brings a wide and varied inventory of professions to his role, including engineer, teacher, and ordained minister. He holds three Queen's degrees: a Bachelor of Science, a Bachelor of Education and a Master's in Divinity. Add to this impressive list, a two-year stint as caretaker on an Amherst Island farm where he kept watch over cattle and fields. Such a wealth of experience and education serves him extremely well.

Currently, Mr. Bowman coaches 120 students registered in the 12-month MBA program. This role builds on his days at Queen's Career Services where he counselled thousands of students in all disciplines, Mr. Bowman believes that career advice holds some universal themes.

"MBA students are very focused and the program is extremely intense, but all students face the same challenges and issues when graduating from Queen's or anywhere else. In my role here, I am in touch regularly with each student, and I develop individual relationships with them. It's satisfying to watch their progress," says Mr. Bowman.

Mr. Bowman particularly enjoys working with international students, who constitute about 50 per cent of the MBA class. They often require information and guidance about the Canadian workplace and coaching in professional etiquette. Although it is early in this year's recruitment cycle, he happily reports that a number of international students have already received job offers.

Mr. Bowman is naturally inclined to guide and teach in both his professional and personal life. He leads Entheos, a small spiritual community that meets on Sunday mornings on Queen's campus. He and his wife have also been guardians to a young man who recently graduated from the University of Ottawa. In addition, they provide live-in care to Ms Bowman's mother who is suffering from Alzheimer's disease. 

Would you like to suggest someone for Employee Spotlight? Email anita.jansman@queensu.ca

LIMESTONE FINANCIAL
STEPHANIE MILLIGAN BA CLU CFP

Riding the Economic Roller Coaster \$

MARKET VOLATILITY

Whenever there are indications that the market may be nearing or experiencing a downturn many investors are tempted to make hasty investment decisions. The temptation, of course, is to sell off a portion of their funds, wait on the sidelines until the market has bottomed out, and then go back in when it's safe.

Although market volatility may be unnerving to novice and experienced investors alike, these kinds of corrections are nothing new, and are a common market phenomenon. The best approach to handling these worrisome periods is to arm yourself with proven historical investment information, and seek professional advise from an Investment Professional.

TO DISCUSS YOUR FINANCIAL FUTURE, PLEASE CONTACT STEPHANIE AT LIMESTONE FINANCIAL
1-888-679-1112 stephanie@limestonefinancial.ca

marjorie COOKE diane COOKE

COOKE
cookekingston.com

ALWAYS A WISE CHOICE!

marjorie / SALES REPRESENTATIVE
c 613.453.2067
marjorie@cookekingston.com

diane / SALES REPRESENTATIVE
c 613.531.1444
diane@cookekingston.com

ROYAL LEPAGE
PROFESSIONAL REALTY BROKERAGE
INDEPENDENTLY OWNED AND OPERATED

80 Queen Street, Kingston, ON
T 613.544.4141 F 613.548.3830

DEPARTMENT OF ENGLISH WELCOMES NEW WRITER-IN-RESIDENCE

Queen's new writer-in-residence is Kingston-based novelist and short-story writer Diane Schoemperlen. She brings



Diane Schoemperlen

to this role an impressive record of award-winning works as well as years of experience teaching creative writing.


Ms Schoemperlen has set up office in Watson Hall and her door is open to students, faculty and staff, as well as Kingston community members who want to hone their creative writing skills and get some professional advice on writing and publishing. She will also participate in literary events offered by the English department.

"I've wanted to be a writer-in-residence for years, and since I am a self-confessed homebody, the Queen's program is ideal for me. I look forward to encouraging and mentoring aspiring writers, and working with students and faculty in the English Department," says Ms Schoemperlen.

Born and raised in Thunder Bay, Ms Schoemperlen has published several collections of short fiction and three

novels, *In the Language of Love* (1994), *Our Lady of the Lost and Found* (2001) and *At A Loss For Words* (2008). Her 1990 collection, *The Man of My Dreams*, was shortlisted for both the Governor General's Award and the Trillium Book Award. Her collection, *Forms of Devotion: Stories and Pictures* won the 1998 Governor General's Award for English Fiction. In 2008, she received the Marian Engel Award from the Writers' Trust of Canada. Ms Schoemperlen taught creative writing at St. Lawrence College in the early 1990s. She lives with her son Alexander, her cat Sammy, and her dogs Nelly and Maggie.

The writer-in-residence program is supported by a Canada Council for the Arts grant and by Queen's University.

To set up an appointment with Ms Schoemperlen email diane.schoemperlen@queensu.ca or visit her Facebook page. 

www.queensu.ca/english/news/news_writer_residence.php



AWD
ALL-WHEEL DRIVE

Lexus RX 350

RX

LIFE IN THE MOMENT
INTRODUCING THE 2012 RX 350 Sfx "K"

\$47,030

COMPLETE LEXUS PRICING
TAXES & LICENSING EXTRA

* See store for details.
Prices subject to change



LEXUS OF KINGSTON

1917 Bath Rd
613.634.5555 1.888.313.9138

lexusofkingston.ca

LEXUS
THE PURSUIT OF PERFECTION.

PENINA LAM HARNESSES THE POWER OF ONE

Kenyan-born Penina Lam is an educational developer at the Centre for Teaching and Learning and an assistant professor in the Faculty of Education. She believes one person's journey can change the lives of many. In 2003, after receiving a PhD in Leadership and Organization Development, she set out to realize her dream of sending African girls to school so they could have the opportunities she had.

As founder and director of the non-profit African Education Resource Centre (AERC), Dr. Lam is fulfilling that dream. The AERC's mission is to inspire girls and women in Africa and promote their right to education. Through scholarship, mentorship and raising public awareness, the AERC addresses both traditional and modern barriers to girls' education. So far the AERC has supported 62 girls, with a plan to increase that number each year.

"If we can change one girl's life by sending her to school, and mentoring and supporting her along the way, we will increase her chances of achieving her own ambitions. Think of how many lives she will change in her community and in the world with a good education!" says Dr. Lam.

Dr. Lam's own journey is an inspiring one. Growing up in Africa, her parents instilled in her the value of education. She embraced her scholarly path, married and moved to Canada with her husband, who also sits on the AERC's board of directors. Together they have made a home in Kingston and Dr. Lam has established her career at Queen's.

Despite great success in her adopted country, Dr. Lam's school girls in Kenya remain close to her heart. She plans to travel to her home country later this




Penina Lam

year with her husband to visit AERC scholars at their schools. In the meantime, she works tirelessly to raise much-needed funds for the AERC and has found a generous spirit in Kingston. A fundraiser held last fall, which featured jewelry and crafts made by Kenyan women, was exceptionally well received.

"We get great support from the Kingston community," she says. "The recession has made fundraising more difficult, and we have a long way to go,

but we are so very grateful for the support demonstrated by people here."

In addition to fundraising, Dr. Lam is passionate about celebrating success and raising awareness of the AERC's activities. This March, during International Women's Week, AERC along with other community groups in Kingston will be actively engaged in celebrating women change makers. 

www.aerckeny.org

THE LIVES OF QUEEN'S PEOPLE OFF CAMPUS

Think Local...

24 hour Local Protection

- ✓ Burglary
- ✓ Fire
- ✓ Flood
- ✓ Life Safety

Special Offer to Queen's University staff of 3 months free monitoring on new activations.



Alliance
SECURITY SYSTEMS
613-547-6666

www.alliancesecuritykingston.com

WALKWEL

YOUR SOLE PROVIDER SINCE 1860.

179 Wellington St., downtown Kingston
613.546.9756 • www.walkwelshoes.com

Quality footwear for men and women, in a variety of styles and widths to fit for comfort and style.

Trained staff for that great fit.

10% off

for Queen's employees
all regular-priced items
in both stores

Quality footwear
for men and women to
provide comfort and style.



175 Wellington St.,
downtown Kingston
613.549.8129

Are you involved in projects outside of Queen's? Do you know a colleague who is? Share your stories with *onQ*.

Email anita.jansman@queensu.ca

YOUR EMPLOYEE I.D. CARD HAS ITS BENEFITS...

In the upcoming months, you'll begin to notice signs like these appearing on the countertops of your favourite independent local merchants. Each sign indicates participation in a brand new Queen's Employee Discount Program. For further information, present your Employee ID card to store staff, or scan the QR Code with your smart phone. Keep looking for new participants, and if you'd like to suggest a local business, please contact us: advert@queensu.ca



This business is a proud participant of the
QUEEN'S EMPLOYEE DISCOUNT PROGRAM.
Present your Staff I.D. card or ask for details.

Scan the QR code below with your smart phone to see
what other businesses offer Queen's employees a discount.

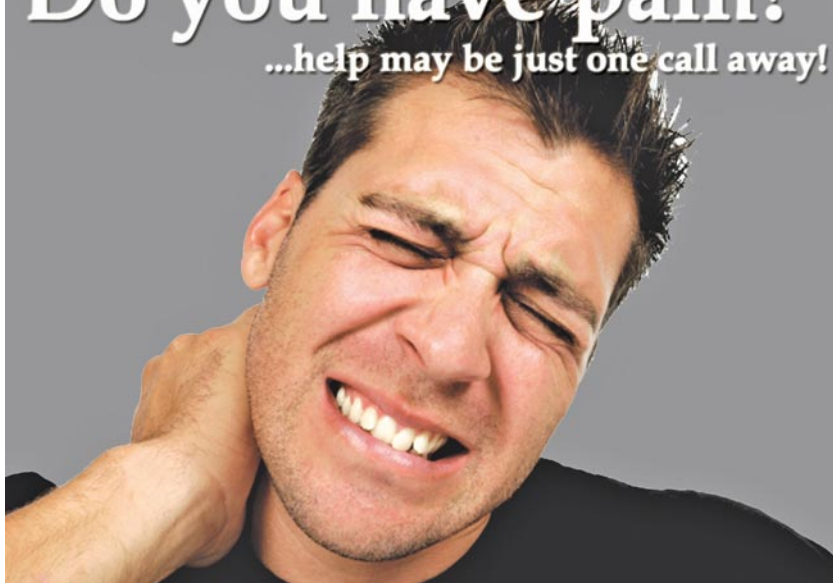


m.queensu.ca/faculty-staff-resources/discounts

ADVERTISEMENT

Do you have pain?

...help may be just one call away!



P T C
THE PHYSICAL
THERAPY CLINIC
AT QUEEN'S UNIVERSITY

Louise D. Acton Building, 31 George Street, Queen's University
Tel: 613-533-2098
Email: ptotclin@queensu.ca
Web: www.queensphysiotherapyclinic.com

EXCITING NEWS FROM ON CAMPUS PRINTING

(FORMERLY QUEEN'S PRINTING SERVICES)

We have joined forces with Delta Printing and DigiGraphics to offer you expanded products and services, with the quality and value you deserve.

We are your on-campus one-stop shop for Queen's stationery, copying, offset printing and mailing.

For Offset Print enquiries
contact Steve Young at
613-533-2912
printing@queensu.ca

For Quick Print enquiries
9 Dunning Hall
613-533-6600
dhp@queensu.ca

AND FINALLY...

NOTES on Q

The implementation of the new HR administrative system, PeopleSoft, was scheduled to begin on February 17. For the latest updates and information visit www.queensu.ca/quasr

Nominate a great professor for the 2012 Alumni Award for Excellence in Teaching. Deadline: Friday, February 24, 2012. queensu.ca/alumni

The Equity Office offers workshops throughout the year so that everyone serving on appointment committees or renewals, tenure, promotion and continuing appointment (RTPC) committees can readily access the required employment equity training. In addition to members of appointments and RTPC committees, administrators must now complete a workshop if they make recommendations or play a decision-making role in an appointment or personnel process for QUFA members. For the workshop schedule and to register for a session, visit www.queensu.ca/equity and click on the training tab.

Over the past few years, Student Affairs has been promoting mental health literacy to faculty, staff and students. Since May 2011, more than 3,000 people have been trained. The programs include Mental Health First Aid (two days), as well as 45-minute, three-hour and one-day workshops to departments, organizations and clubs. For more information, visit www.queensu.ca/studentaffairs or give Bonnie Livingstone a call at ext. 78886 to book a session.

At January's Senate meeting, Principal Daniel Woolf delivered an address regarding the current challenges the university is facing. To read his speech, go to: www.queensu.ca/principal/speech.html



Chef **Michael Smith** (left, with Kingston town crier Chris Whyman, and Principal Daniel Woolf in the background) was on campus January 12 to celebrate the grand opening of the Canadian Grilling Company. The restaurant, located in Mackintosh-Corry Hall, serves up local, sustainable cuisine to Queen's staff, students and faculty. Everything is made on site, from the burger buns to the ketchup. The Queen's outlet is the flagship location of what is set to become a national chain.

From p. 2 **HIDDEN GEMS**

THE MYSTERY OF THE LAW COLLECTION, LEDERMAN LAW LIBRARY

This collection began in 2003 and contains books and DVDs which range from Charles Dickens to Minette Walters, Sue Grafton, Elizabeth George and Anne Perry. Most of the books have been donated by avid mystery readers on campus. Many of the films in the collection were purchased by the library over the years based on the suggestions of students, faculty and staff. Titles include *12 Angry Men*, *Legally Blonde*, and *Ghosts of Mississippi*.

Any holder of a Queen's library card can borrow from the collection. It is housed in the Faculty of Law's Lederman Law Library, second floor, Macdonald Hall.



IN THE HEART OF THE ENTERTAINMENT
& HISTORIC DISTRICT OF DOWNTOWN KINGSTON



Innovative, Contemporary Cuisine

AquaTerra by Clark
Restaubistro

Best Wine Selection in Eastern Ontario
Recommended in Where To Eat in Canada 2005-10
VQA Award of Excellence

Radisson Hotel Kingston Harbourfront
One Johnson Street, Kingston, ON • 613.549.8100



Radisson

1.800.333.3333 • www.radisson.com/kingstonca

HELP LINES

Campus Security
Emergency Report Centre

613.533.6111

Human Rights Office
Irène Bujara, Director 613.533.6886

Sexual Harassment Complainant Advisors
Margot Coulter, Coordinator 613.533.6629

Chuck Vetere, Student Counselling
ext. 77978

Anti-Racism Complainant Advisors
Stephanie Simpson, Coordinator 613.533.6886

Audrey Kobayashi, Geography 613.533.3035

**Anti-Heterosexism/Transphobia
Complainant Advisors**
Jean Pfeleiderer, Coordinator 613.533.6886

Eleanor MacDonald, Politics 613.533.6631

Coordinator of Dispute Resolution Mechanisms
Harry Smith 613.533.6495

Sexual Harassment Respondent Advisor
Greg Wanless, Drama ext. 74330

Anti-Racism Respondent Advisor
Ellie Deir, Education ext. 77673

Internal Dispute Resolution
SGPS Student Advisor Program 613.533.3169

**Freedom of Information
and Protection of Privacy**
Diane Kelly, Access and Privacy Coordinator
613.533.2211

Equity Office
613.533.2563

Accommodation and Wellness
Shannon Jones, Workplace Advisor
ext. 77818

Employee Assistance Program
1.800.387.4765

University Chaplain
Brian Yealland 613.533.2186

Rector
Nick Francis 613.533.2733

Health, Counselling and Disability Services
613.533.2506

Queen's University is committed to contributing
to a sustainable global environment.

This publication is printed on Supreme Matte paper
which contains 30% post-consumer waste and is
processed chlorine-free using renewable energy.