

## New university group keeps retirees in the loop

BY CELIA RUSSELL

For many Queen's retirees, the only connection with their former employer is a monthly pension cheque. A new and growing group wants to change that.

About 175 people packed the

inaugural meeting of the Retirees Association of Queen's in April and so far 250 people have joined, says association President John Meisel, professor emeritus in the Department of Political Studies. He is sending out a sec-

ond mailing this month to invite more retirees to join.

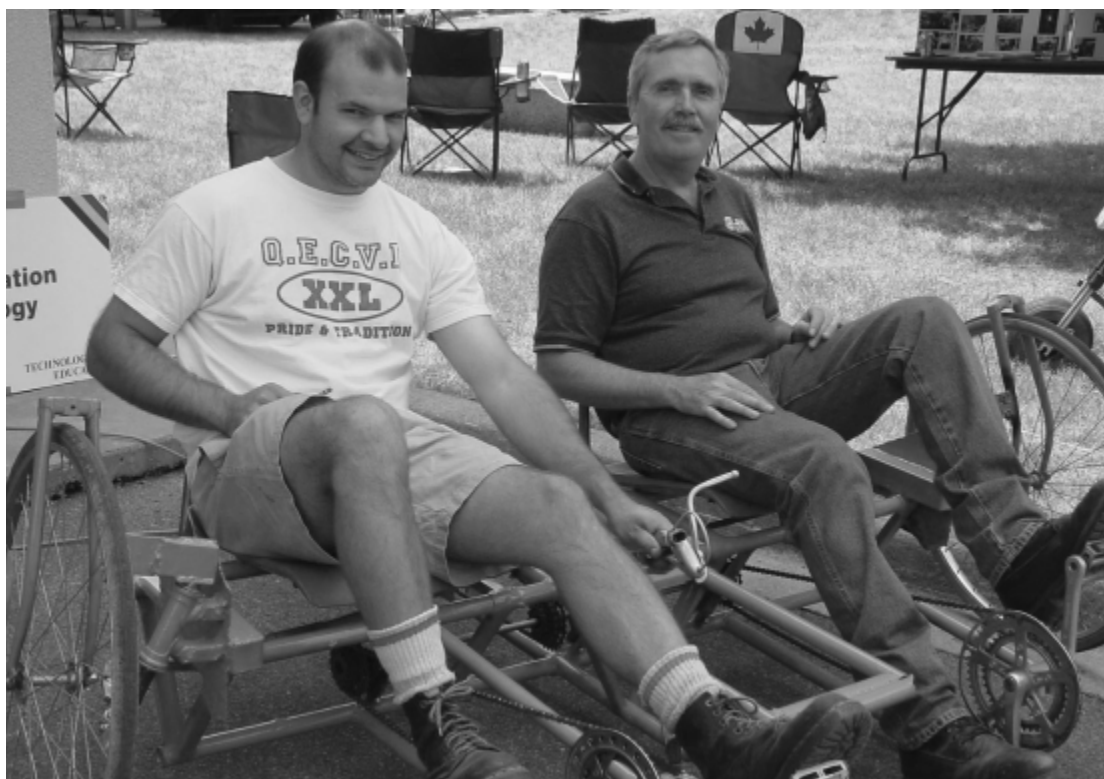
A survey conducted early this year found that there was a need for such a group, many of which exist at other universities.

"We found that some depart-

ments looked after their retirees quite well while others did nothing," he says. "Most importantly, we felt that it should be an organization of staff and faculty – support staff, librarians, academics, everybody."

With university life changing dramatically over the past several years, the group's mandate is to promote a sense of continuing membership in the Queen's family.

*Retirees, page 2*



A new twist on a bicycle built for two. Peter Davis and Gary Lotz, students in the Faculty of Education Additional Qualifications Summer Program in Technology, display their human powered vehicle at a recent technology fair at West Campus. Fashioned from recycled material, the project is designed to introduce students to the new secondary school curriculum in technology.

## Still paying for parking? The shuttle just got better

The Queen's-KGH parking shuttle service now features extended hours, larger buses and faster service to KGH.

The free service, which began last October, has expanded to accommodate an ever-increasing number of users.

"The remote parking and shuttle service has been very successful in providing an alternative for those who are not able to obtain a parking permit for the main campus or choose not to take advantage of a less expensive alternative," says Tom Morrow, associate vice principal, operations and finance. "Working in partnership with the Kingston General Hospital, we are very pleased to be able to

offer an expanded shuttle service to make this very successful alternative even more attractive."

Shuttle service now starts at 5:30 am with continuous 20-minute service until 11:30 pm. During peak hours (5:30-9 am and 3-6 pm), two 40-person shuttles will operate. Shuttle 1 is a non-stop express directly to KGH and Shuttle 2 will do the entire route. Due to the bus size, it was necessary to eliminate two of the stops and adjust the route to stick to the 20-minute schedule.

The service moves people between the free lots at west campus to various drop-off and pick-up stops on the main campus.

*Free shuttle, page 2*

## Sun compass guides migrating monarchs, researchers discover

BY NANCY DORRANCE  
NEWS AND MEDIA SERVICES

Queen's neuroscientist and psychologist Barrie Frost and research partner Henrik Mouritsen have unlocked one of the secrets behind the amazing migration of monarch butterflies.

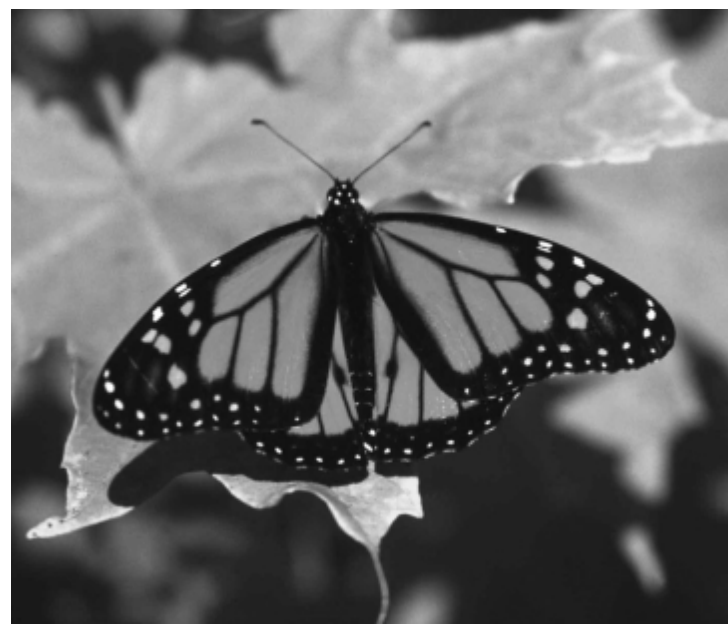
The researchers discovered that the distinctive orange-and-black insects are able to stay on course for their annual 3,500-km journey from eastern Canada to Mexico through a time-compensated sun compass.

Using a specially crafted

flight simulator, the Queen's team directed a gentle, vertical flow of air from below, which stimulated the tethered monarchs to fly without influencing their direction. The virtual flight paths were recorded with a special optical encoder under controlled conditions including both sunny and cloudy skies, and artificial daylight in which time was either advanced or delayed by six hours. Flight paths were also recorded under simulated cloudy conditions, where magnetic fields were rotated.

The system allowed Drs. Mouritsen and Frost to reconstruct large sections of the monarch's migratory flight path, which were equivalent to following the insects between 50 and 100 km. This provided very accurate measurements of the direction and flight paths that would have been taken by the monarchs.

Results of the research – funded by NSERC, the Institute for Robotics and Intelligent Systems (a National Centre of Monarchs, page 2



Monarch butterfly just released after participating in flight simulator experiments.

In this issue...

**Discoveries at Queen's**  
See page 3

**Going batty at QUBS**  
See page 5



## New signs address safety, visual identity

BY LORINDA PETERSON

Finding your way around Queen's can be daunting if you are a visitor, new to campus or simply looking for a building you've not visited before.

But have you noticed? Most buildings on campus now have new exterior signs.

As part of Queen's 1995 Signage Policy, signs are erected

as funds are available to faculties, during new construction and renovation projects, says Jeanne Ma, Director, Campus Planning.

"Internal office signs, directional signs, building directories and floor plans are part of the design for all capital projects," she says. "New buildings such as

Goodes Hall and Chernoff Hall are designed to carry a full complement of signs."

Signs are part of a comprehensive program addressing the university's visual identity and campus image. To ensure ease of maintenance and updating, signs conform to a specific size, placement and consistent messaging.

Signs placed at buildings' front entrances state the building name and campus address and carry Queen's visual identity consisting of the original Queen's crest and word mark. Internal signs include service access information as well as room locations and office assignments.

*Signs, page 2*

# Art Centre acquires important Canadian painting



The Moore Gallery Ltd.

The Agnes Etherington Art Centre has acquired a significant painting by Painters Eleven artist Kazuo Nakamura. *Structural Movement*, 1956, is part of an exhibition on view at the art centre until Sept. 8, circulated by the Robert McLaughlin Gallery of Oshawa.

Mr. Nakamura, who died last spring, emerged in the post-1950 Canadian art milieu that saw Modernist abstraction sweep away the figurative traditions of Anglo-Canadian painting.

The painting, purchased with the assistance of the Chancellor Richardson Memorial Fund, is the first major Nakamura painting to enter the art centre's distinguished Canadian collection. This is an important moment for the art centre, says Janet Brooke, art centre director. "I am extremely grateful to the Chancellor Richardson Memorial Fund, to the artist's estate and to the Christopher Cutts Gallery in Toronto for helping us to significantly enrich our Canadian collection." □

the art centre, says Janet Brooke, art centre director. "I am extremely grateful to the Chancellor Richardson Memorial Fund, to the artist's estate and to the Christopher Cutts Gallery in Toronto for helping us to significantly enrich our Canadian collection." □

## Help Lines

Campus Security  
Emergency Report Centre:  
**533-6111**

**Human Rights Office**  
533-6886  
Irene Bujara, Director

**Sexual Harassment Complainant Advisors:**  
Margot Coulter, Coordinator  
533-6629

Millard Schumaker – Religion  
533-2106 ext. 74323

Chuck Vetere – Student Counselling  
533-2893 ext. 77978

**Anti-Racism Complainant Advisors:**  
Stephanie Simpson,  
Coordinator 533-6886

Audrey Kobayashi – Geography,  
533-3035

**Anti-Heterosexism/Transphobia Complainant Advisors:**  
Julie Darke, Coordinator  
533-6886

Eleanor MacDonald, Politics  
533-6631

**Coordinator of Dispute Resolution Mechanisms**  
Adrienne Clarke  
533-6495  
directs staff, students and faculty to the appropriate campus resources for assistance.

**Sexual Harassment Respondent Advisors:**  
Paul Banfield – Archives  
533-6000 ext. 74460

Mike Stefano – Purchasing  
533-6000 ext. 74232

Greg Wanless – Drama  
533-6000 ext. 74330

**Anti-Racism Respondent Advisor:**  
Ellie Deir – Education  
533-6000 ext. 77673

**Internal Dispute Resolution**  
SGPS Student Advisor Program  
533-3169

**University Grievance Advisors – Students:**  
Mel Wiebe – English  
533-2153

Shirley Eastabrook – Nursing  
533-6000 ext. 74755

Carol McKeen – Business  
533-2326

**University Grievance Advisors – Staff:**  
Jane Baldwin – Surgery  
533-6302

Kathy Beers – Student Affairs  
533-6944 ext. 74022

Sandra Howard-Ferreira  
School of Graduate Studies and Research  
533-6100 ext. 77310

Gary Racine – Telecommunications  
533-3037

**Freedom of Information and Privacy Protection**  
Officer Don Richan 533-2378  
Commissioner Margaret Hooley  
533-6095

**Employee Assistance Program**  
1 800 387-4765

**University Chaplain:**  
Brian Yealland  
533-2186

**Rector**  
Daniel Sahl  
533-2733

**Student Counselling Service**  
533-2893

\*Internal numbers may be accessed from a touch-tone phone off-campus by dialling 533-6000 + extension number.

## Retirees

continued from page 1

"For many retirees, and particularly for the older ones, Queen's was a community – it wasn't just a job. It was not nine-to-five, five days a week. We got involved with the life of the community. There are still lots of people who consider their relationship with Queen's like being part of a family."

To nurture that relationship, the group is hatching several projects, featuring a tour of the Queen's Biological Station at Lake Opinicon, featuring a picnic lunch and water sports or hiking; a guided fall tour of Goodes Hall, the new home of the School of Business; a guided visit to the Queen's Arboretum; a fall reception at the Arts Centre, attended by Principal Bill Leggett and Claire Leggett; a fall information session on retirees' coverage under the Queen's medical plan and a carol service at which retirees will be the guests of students. A springtime luncheon is also planned to coincide with the annual general meeting of the association.



John Meisel, president of the Retirees Association of Queen's

The events will provide a chance to renew old friendships and keep members up to date on Queen's matters. The group will also keep the university informed on matters of interest and concern to its retirees.

Group members, who pay an annual \$15 fee, receive a list of

services available to new and old retirees, a newsletter, and links with retirees at other campuses.

The group has tremendous potential.

"We want to publicize what's available through the university to retirees, but we also want to explore what retired faculty and

staff can do for the university," says Dr. Meisel.

Joining Dr. Meisel on the executive are Joyce Zakos, vice-president, Stu Vanderwater, secretary and Pat Bogstad, treasurer. [www.queensu.ca/retirees](http://www.queensu.ca/retirees) □

## Signs

continued from page 1

"Updated campus signs have played a visible and important role in helping bring Queen's new visual identity into everyone's sights," says Richard Seres, Director, Marketing and Communications. "The success of an integrated campus identity is dependent upon the participation of all institutional points of communication, including signs."

In addition to providing direction and visual identity, signs make an important contribution to personal safety on campus.

Attractive, well-maintained facilities and building signs give the message that the campus is



Signs are part of a comprehensive program addressing the university's visual identity and campus image.

well cared for and add to people's feelings of safety, says Louise Fish, Director, Campus Security. Someone able to quickly and easily identify the buildings around them knows

where they are, feels confident and moves about campus in a decisive manner. This makes them less likely to be targeted and victimized.

Directories such as the cam-

pus map at the Union Street electronic sign in front of the John Deutsch University Centre and directories in building lobbies help get people where they want to go on campus. □

## Gazette

Editor: Celia Russell  
Editorial Assistant: Lorinda Peterson  
Associate Director: Anne Kershaw  
Director: Richard P. Seres  
Design: Graphic Design Services

The *Gazette* is published twice a month (except during the summer) by the Department of Marketing and Communications 107 Fleming Hall, Queen's University, Kingston, Ontario K7L 3N6.

Submissions are welcome, but the *Gazette* reserves the right to edit and print contributions as space and staff time permit.

### INQUIRIES

Tel 533-6000 ext 74498  
Fax 533-6652  
Email [gazette@post.queensu.ca](mailto:gazette@post.queensu.ca)

**QUEEN'S NEWS CENTRE**  
[www.queensu.ca/newscentre](http://www.queensu.ca/newscentre)

ISSN 0319-2725

### SCHEDULE

Noon deadline	Publishing date
30 August*	9 September
16 September	23 September

\*This issue only

## Monarchs

continued from page 1

Excellence), the Canadian Institute for Advanced Research, the Carlsberg Foundation of Denmark, and the Volkswagen Stiftung Foundation – showed that the butterflies rely on the sun for navigation, and are able to compensate for time changes. There was no evidence that they use a magnetic compass during migration.

Details of the study appeared in a recent on-line issue of the *Proceedings of the [American]*

*National Academy of Sciences.*  
[www.pnas.org/misc/archive071202.shtml#HL3psyc.queensu.ca/~froslab/](http://www.pnas.org/misc/archive071202.shtml#HL3psyc.queensu.ca/~froslab/) □

## Free shuttle

continued from page 1

Those without cars are also invited to ride the shuttle.

Schedules and maps are available on the buses, the Queen's Parking Office at 207 Stuart St., (533-6979) and at [www.queensu.ca/pops](http://www.queensu.ca/pops) and [www.gomccoy.com](http://www.gomccoy.com). For more information, contact Donna Stover, Parking Manager, 533-6000 ext. 77589. □

Fresh news... ▶

# Theological College gets major grant from U.S. endowment



Jean Stairs

Queen's Theological College has been awarded a major grant by Lilly Endowment Inc.

to launch a new program for high school youth who wish to explore their Christian faith and how it relates to their daily lives and future vocations.

"It's a brand-new program designed to provide our young people with a hands-on, real-life learning experience in a university setting," says Rev. Dr. Jean Stairs, Queen's Theological College principal and a profes-

sor of practical ministry.

The college is the only Canadian institution to receive a grant for youth programming from the Indiana-based Endowment, a private family foundation that supports a wide variety of initiatives in religion, education and community development.

The grant is part of a continent-wide endowment program to provide opportunities for

young people to engage in theological study and inquiry.

Under the \$855,120 (US) grant, the college will run an annual summer-time residential program drawing on its multi-faith, ecumenical faculty and on community leaders in a variety of fields for teachers. The first three-week program for 20 15- to 18-year-olds will take place next summer.

The program will include theological and biblical study, worship, vocational reflection, spiritual disciplines, service in social ministries, and a three-day placement in a congregation or ministry setting. A reunion retreat the following spring will provide an opportunity to reflect on the experience.

[www.queensu.ca/theology/L1News.htm](http://www.queensu.ca/theology/L1News.htm) □

# Turkish students eye Queen's as top higher education choice

Queen's is popular with Turkish students, School of English representatives discovered on a recent visit.

The school, along with organizations from nine other countries, participated in a three-city education fair, which drew thousands of students.

Overall, one third of inquiries about Queen's concerned the school's English as a Second Language program, one quarter concerned undergraduate and the

remainder, post-graduate programs, Associate Director Suzanne Smith and Marketing Coordinator Barbara Yates found.

As many as two of three Turkish students seeking post-secondary education must do so outside the country as there are not enough universities in the country to answer the demand.

Among the most popular



undergraduate programs were Applied Science, Computing Science, and Commerce. The most frequent inquiries about

graduate programs were for the MBA for Science and Technology, the MSc in Management, and various MSc programs in Applied Science.

This summer, the school is conducting two English language programs, attracting students from 18 countries, who live on- or off-campus.

The school also hosts contract groups tailoring programs to fit their needs. This summer's contract groups include a group of 30

nursing students from Seibo Nursing School in Japan, visiting for the first time in a joint venture between the School of English and the School of Nursing.

The school's fall program starts Sept. 12 and runs to Dec. 12. New in 2003 is a five-week program from Jan. 9 to Feb. 14, designed to target the Latin American market where the summer vacation occurs during our winter months. For more on the School of English, see page 6.

[www.queensu.ca/soe](http://www.queensu.ca/soe) □

# Eleven patents issued for Queen's -generated discoveries

Eleven patents for developments resulting from research in life sciences, biology and computing have been issued to Queen's inventors during the first half of 2002.

The patents – nine U.S., one Canadian and one Indian – were issued for methods and products ranging from a new treatment for female sexual dysfunction and a new method for diagnosing premature labour to the development of an anaesthetic-laced cement for easing the localized pain of orthopedic surgery. In 2000-'01, a total of 20 patents were issued over all – 10 U.S., four Canadian and six foreign.

Patents were issued to the following:

Michael Adams and Jeremy Heaton for Methods for the Normalization of Sexual Response and Amelioration of Long-term Genital Degradation; and for Method and Compositions for the Treatment or Amelioration of Female Sexual Dysfunction (two U.S. patents). These patents result from the researchers' investigations into new uses for apomorphine for the treatment of different types of sexual dysfunction. Their work with apomorphine for the treatment of male erectile dysfunction led to the development of the impotence

drug Uprima™, currently on sale in 46 countries worldwide.

Michael Adams, Jeremy Heaton, and Charles Graham for Method for Diagnosing a Vascular Condition (U.S. patent). This patent has applications in the diagnosis of premature labour and hypoxia (oxygen starvation of tissues).

James Banting, Jeremy Heaton and Michael Adams for Antagonism of Endothelin Actions (U.S. patent). This method for controlling the age-related thickening of the walls of the vascular tissue in the genital area has applications in the treatment of erectile dysfunction.

David Bond and John Rudan for Anaesthetic Bone Cement (U.S. patent). The researchers' patented method employs a bone cement mixed with an anaesthetic such as lidocaine that, when applied, provides sustained localized pain relief following an orthopedic surgical procedure such as an implant. The invention is under exclusive license to DePuy Orthopedics, Inc. of Warsaw, Indiana.

Kenneth Edgecombe and Alan Ableson for Method and Apparatus for Determining Multi-Dimensional Structure (U.S. patent). This mathematics-based technology can be used for analysis in a wide range of data fields including protein crystallography, fluid dynamics, edge detection (the enhanced interpretation of computerized images), and financial markets. The technology is exclusively licensed to

Molecular Mining Corp.

Laurie A. Graham, Yih-Cherng Liou, Virginia Walker and Peter Davies, for Tenebrio Antifreeze Proteins (U.S. patent). This patent results from the researchers' discovery of the genes encoding novel antifreeze proteins of the mealworm beetle. These proteins lower the freezing point of the solutions containing them, offering promise in the development of freeze-resistant food products, crops, fish stocks, and biologics such as blood plasma and organs for transplant. The technology is exclusively licensed to AF Proteins of Waltham, Mass.

Kenton Ko and Peng Pang for Enhanced Transport with a Plastid Membrane Transport Protein (U.S. patent). This method provides enhanced means of transport of molecules (such as proteins) into and/or across cellular membranes. It is particularly useful for increasing the secretion of proteins across plant membranes. The technology is exclusively licensed to Performance Plants, Inc. of Kingston and Saskatoon.

Martin Petkovich, Jay White, Barbara Beckett and Glenville Jones for Retinoid Metabolizing Protein. (Indian patent). This the fourth patent issuing from the researchers' work on a key enzyme involved in the metabo-

lism of Vitamin A. The technology is exclusively licensed to Cytochroma of Kingston, ON and forms the basis for a partnership with Allergan, Inc. of Irvine, Calif.

Roy Pottier, James Kennedy and Michel Ringuet for Porphyrin Derivative (Canada). This patent relates to the researchers' work in the treatment of malignant tissue abnormalities through selective targeting of cancer cells using photo-chemotherapeutic agents derived from the iron-carrying molecule, porphyrin. This patent builds on previous work by the researchers in the field of photodynamic therapy using aminolevulinic acid (ALA), a porphyrin-based treatment for skin cancer exclusively licensed to DUSA Pharmaceuticals Inc. of

Toronto and now on sale throughout the U.S.

Gregory Thatcher, Brian Bennett, James Reynolds, Roland Boegman and Khem Jhamandas for Nitrate Esters and Their Use for Neurological Conditions (U.S. patent). This patent relates to the researchers' work in the field of nitrate esters, and their potential use as treatment for a wide range of diseases characterized by neurodegeneration and loss of mental capacity. Of particular note is the ability of the technology to enhance cognition, holding promise for the treatment of such conditions as Alzheimer's, epilepsy, stroke, AIDS-induced dementia, and other diseases that cause loss of mental function. This technology is exclusively licensed to GBtherapeutics of Kingston. □



Workers carry building material at the site of the new entrance to Macdonald Hall. Renovations, which are to be completed this fall, include a new elevator and other accessibility improvements and improved building presence.

► ...Watch for a new and revitalized Gazette coming to a newsstand near you  
**Monday, Sept. 9!**

# New training program bridges gap between research and clinical care

Kingston is one of 12 Canadian cities awarded funds to establish a new national training program that will improve children's health. The Hospital for Sick Children Foundation's National Grants Program is contributing \$1.8 million to the Canadian Child Health Clinician Scientist Program that will bridge the gap between scientific research and clinical care in Canada. It will be offered through universities and affiliated children's hospitals in St. John's, Halifax, Montreal, Kingston, Hamilton, Toronto, Ottawa, London, Winnipeg, Edmonton, Calgary and Vancouver. Queen's and Memorial University (St. John's)

will be involved in curriculum development.

The program will train doctors and other health care professionals in the field of child health how to conduct research so they can work as independent scientists. Currently, The Hospital for Sick Children (HSC) is the only paediatric health centre in Canada that offers such a program. "As clinicians, health care professionals are barraged with questions such as: 'What's the best treatment? How can we improve long-term results for this child? Can we cure this disease?'" says Dr. Norm Rosenblum, associate chair (Research) of the HSC Department of Paediatrics. "As a

result, more and more clinicians are choosing to investigate health care problems in greater depth, through both basic and clinical research. Their unique perspective as clinician and researcher enables them to both identify and solve problems, which will help bridge the gap between the scientific community and front-line health care."

The new national program will give trainees from children's hospitals across Canada the opportunity to complete clinician-scientist training. It will also provide more opportunity for educational and collaborative experiences with institutions and researchers across the country. □

## Newsnotes

### Business professor named CIAR associate



Marc Busch

Marc Busch (Business) has been appointed an associate with The Canadian Institute for Advanced Research's

"economic

growth and institutions" program for a two-year renewable term. A private sector initiative created by J. Fraser Mustard, CIAR is Canada's research university without walls, with more than 180 renowned international scholars working on nine major research programs that influence health, social and economic policies, as well as science and technology in Canada and abroad.

He joins a small group that includes Nobel laureate George Akerlof, program leader Elhanan Helpman (Harvard and Tel Aviv University), as well as academics from universities in Canada (UBC, U of T, Simon Fraser and Universite du Quebec) and the U.S. (Harvard, MIT, Stanford and Chicago).

"It's a tremendous honour to be associated with such a distinguished group of scholars," says Dr. Busch. "I presented a paper last October to the economic growth program, and was captivated by the intellectual energy in the room. It was a great learning experience, and led me to take a novel cut at my research on the new economic geography, the results of which I'll present this October at the next CIAR meeting. In turn, exposure to the research of a program like this can only make me a far better teacher in the classroom."

www.ciar.ca

### Stay current with new technology

The Queen's community is invited to InfoShare 2002, a free day-long event to focus on solutions to common problems such as network and desktop security, updating software and hardware, changes in database access systems, and more. Details, registration is online. Space is limited - register early and avoid disappointment.

www.its.queensu.ca/infoshare

### Engineering students tops in provincial competition

Four fourth-year mechanical engineering students placed first in the 2002 Materials and Manufacturing Ontario (MMO) Connections Forum Competition held recently in Toronto. Tony Hilliard, Jason Mateer, Steve Reynolds and Chris Wisniewski worked on the design and construction of a testing device for a bi-directional clutch for Ker-Train Research Inc. Their faculty supervisor was Peter Wild. In addition to the design, the competition evaluated their teamwork, project management and communication skills.

The students undertook the project as part of MECH 460/462, the senior year design course in Mechanical Engineering. Although the course, which requires students to work as teams on industrially sponsored projects was introduced as core more than four years ago, it was only in the past year that MMO Connections funding provided the resources needed to enable hard prototyping of the designs.

"This win at MMO Partnerships is another example of how Queen's engineering continues to excel in its hands-on team project-based approach to learning", says Mechanical faculty member Chris Mechefske, who coordinated the course along with John Pelow.

me.queensu.ca/courses/MECH460/index.html

### New resources for researchers

Researchers can now click a mouse to gain campus-wide access to three substantive online reference resources, thanks to Queen's Libraries.

WorldCat (firstsearch.oclc.org/fsip?dbname=worldcat) offers one-stop shopping of the holdings of thousands of research libraries around the world. See [www.oclc.org/worldcat/](http://www.oclc.org/worldcat/)

The new Web edition of OED Online (dictionary.oed.com/entrance.dtl), the complete Oxford English Dictionary, is updated quarterly and supercedes the CD-ROM formerly available at library workstations only. See [dictionary.oed.com/help/](http://dictionary.oed.com/help/)

The online version of the 34-volume print publication, Grove Dictionary of Art (groveart.com), features constant additions and updates, more than 22,000 links to art images in galleries and museums around the world, and enhanced search features with an online vs. print reference source.

### All ages to access Queen's pubs, licensed events

Queen's students who are 18 years and younger now have access to Alma Mater Society services that were previously off-limits. Access cards will be distributed this fall to allow these students admission at Alfies and the Queen's Pub, the two AMS services licensed to serve alcohol, as well as Clark Hall Pub, operated by the Engineering Society. The All Ages Access program, currently operating at several other Canadian universities, will ensure that all AMS members can get access to the services the AMS provides, says AMS President Mike Lindsay. "It gives students under the age of 19 an opportunity to join their friends for a night out without being restricted by age requirements." The card system also aims to pro-

Newsnotes, page 5

# Queen's in the News

## Highlights of Queen's experts in the media Queen's News & Media Services

Through our proactive media strategy, Queen's News and Media Services identifies newsworthy faculty expertise and research to bring to the attention of the national media.

July 9- Aug. 6, 2002

**Douglas Reid** (Business) comments in the *National Post* about Air Canada cuts to Tango operations at summer's end.

Military historian and research fellow **Sean Maloney** is quoted in the *National Post* from his book *Canada and UN Peacekeeping*.

Kinesiologist **Peter Katzarzyk** (Physical Health and Education) comments in *Maclean's Magazine* about the dramatic increase of obesity in children.

**Tom Kent** (Policy Studies) comments in the *Ottawa Citizen*, *The Kingston Whig-Standard*, *St. Catharines Standard* and *Calgary Herald* about Chretien's current leadership of the Liberal Party. His predictions for the future of Medicare are featured in *The Sherbrooke Record*.

**Don Macnamara** comments in an *Ottawa Citizen* story about Canada's military spending policy.

**Louis Delvoie** (International Relations) is interviewed by eight CBC stations across Canada from St. John's to Victoria about U.S. plans for military actions against Iraq.

**Don Stuart** (Law) comments on CBC radio *World Report* and *Ontario Morning* about a recent announcement that identifies seven Islamic groups as terrorist organizations in Canada. He also comments in the *Montreal Gazette* about anti-gang legislation and mega-trials.

In a CBC Radio *Ontario Morning* interview, **Cinde Lock** (Education) discusses her research on teachers' perceptions of the Education Quality and Accountability Office, the curriculum and standardized tests for grade nine math. Her survey is cited in the *Kingston Whig-Standard* where **Lynda Colgan** (Education) comments on the importance of the research.

Demographic trends and health policy researcher **Mark Rosenberg** (Geography) comments on the front-page of the *Kingston Whig-Standard* about a recent Canadian census report contradicting the belief that Kingston is a retirement mecca. Researcher **Mary Ann McColl** (Community Health and Epidemiology) comments in the same story about the overall health of seniors in Kingston.

**Hugh Thorburn** (Political Studies) comments on the front-page of the *Kingston Whig-Standard* about the current leadership rivalry in the Liberal Party.

The research by **Bob Dalrymple** (Geological Sciences and Engineering) leading to the discovery of the earliest known evidence of the first creatures thought to have ventured from the primeval seas onto land is featured in the *Kingston Whig-Standard Companion*.

**Dr. Walter Rosser** (Family Medicine) comments extensively in the *Kingston Whig-Standard* about the National Institutes of Health decision to halt a hormone replacement therapy study five years after results indicate that long-term use of estrogen and progesterin increase the risk of stroke, heart attack and breast cancer.

**Carol Miernicki Steeg** (PARTEQ) comments in a *Kingston Whig-Standard* feature about PARTEQ's highly specialized patenting team.

**Dr. Elizabeth Eisenhauer**, recipient of the O. Harold Warwick Prize for excellence in cancer research, comments in the *Kingston Whig-Standard* about her Canadian drug trial research.

**Deb Feldman-Stewart** (Psychology) comments in the *Kingston Whig-Standard* about her current research study aimed at helping men with prostate cancer make informed decisions about treatment.

Business ethics specialist **Jim Ridler** (Business) comments in the *Edmonton Journal* about an increase in the number of non-business students applying to take business ethics courses.

A report co-authored by **Wendy Craig** (Psychology) called 'Making a Difference in Bullying' is cited in the *The Sherbrooke Record*.

A *Canadian Medical Association Journal* article by **Samuel Shortt** (Centre for Health Services and Policy Research) is cited in a *Nanaimo Daily News* story about the idea of medical savings accounts to help reform the ailing healthcare system. An op-ed piece by **Dr. Shortt** appears in the *Kingston Whig-Standard*.

In a CFLY radio interview, **Mary Lou Delisle** (Residences) passes on tips for first year students and their parents that will ease the students' transition to university life.

**Aaron Childs** (Medicine) participates in a student panel on CORUS Ontario Radio network discussing the future of the health-care system in Canada.

To inform News & Media Services of your latest research findings or upcoming journal publications, call Nancy Marrello, Coordinator, News & Media Services, ext. 74040 or Nancy Dorrance, Writer, News & Media Services, ext. 32869.

Check Queen's News Centre for daily Queen's in the News updates. [www.queensu.ca/newscentre](http://www.queensu.ca/newscentre)

# Information technology leader, mammalian expert to visit Queen's



Maryam Alavi

One of the world's leading experts in the use of information technology in education and

a well-known biologist whose research centers on mammals, particularly bats, will be visiting Queen's this month.

Maryam Alavi, the John and Lucy Cook Chair of Information Strategy and Senior Associate Dean for Faculty and Research at the Goizueta Business School at Emory, is the first visiting scholar to Queen's Centre for Knowledge-Based Enterprises (KBE). She will be on campus from Aug. 12 to 24, and will work with faculty and graduate students on topics related to knowledge management.

Fiona Reid, biologist, artist, writer and tour guide will be in residence at Queen's University Biological Station (QUBS) at Lake Opinicon from Aug. 10 through 18.

Emerging theories and practices that view knowledge creation and learning as the principal sources of sustainable competitive advantage motivate Dr. Alavi's research. In particular, she is investigating the role of information and communication technologies in the development and implementation of knowledge management strategies.

"Maryam Alavi is one of the world's leading experts in the use of information technology in education, particularly higher education," says KBE Director Brent Gallupe. "With the demand for web-based education services and products skyrocketing, she has been a voice of reason for those who think technology is a 'silver bullet' for modern education. Her talk will be of interest to any organization which uses online training services or who provides those services."

She has authored numerous papers in the areas of decision support systems, end-user com-

puting, collaboration support and more recently technology-mediated learning and knowledge management. She is a frequent speaker at national and international research conferences on these topics. She has served on the editorial boards of several scholarly IS journals including MIS Quarterly, Information Systems Research, and Journal of Management Information Systems and is also a member of the editorial board of Encyclopedia of Computer and Information Systems.

On Thursday Aug. 15, Dr. Alavi will deliver a public lecture entitled Changing Higher Education: The Siren Song of Technology in the McLaughlin Room at the John Deutsch University Centre at 2:30 pm. A reception will follow.

All are welcome to take the short trip to the biological station on Lake Opinicon to meet biologist Fiona Reid.



Fiona Reid

A scientific illustrator and freelance writer, Ms. Reid also holds an appointment as Departmental Associate, Centre for Biodiversity and Conservation Biology, Royal Ontario Museum, Toronto and leads bat workshops for Bat Conservation International to Costa

Rica, Belize and Arizona.

She has researched, written about and illustrated bats of North, Central, and northern South America, and Papua New Guinea, and illustrated a field guide to the bats of the world. More generally, she has written and illustrated a widely used Field Guide to the Mammals of Central America and Southeast Mexico, and is currently writing and illustrating the new edition

of the Field Guide to the Mammals of North America, in the Peterson Field Guide series.

Ms. Reid will deliver a public lecture and slide show on Mammals of Central America on Monday, Aug. 12 at 7:30 pm.

On Wednesday, Aug. 14, she will present an art show and free workshop on the making of a field guide. Those interested should pre-register for the workshop by calling Julia Nicholson at QUBS at 359-5629. Meal charges apply. At 7:30 pm, Ms. Reid will present an illustrated lecture on Bats of Costa Rica: diversity and conservation. Her talk will examine the diverse bat fauna of this small country, which has more than 100 species. The importance of bats will also be discussed.

Ms. Reid's visit is sponsored by the Pearl E. Williams & Llewellyn Hillis Fund and assisted by the Friends of Opinicon.

[www.business.queensu.ca/kbe](http://www.business.queensu.ca/kbe)  
[biology.queensu.ca/~qubs](http://biology.queensu.ca/~qubs) □

## Newsnotes

continued from page 4

vide a safer alternative to many of the Princess Street bars. At all-ages events, students will present their cards to student constables, who will issue wristbands. Students must show their wristbands when leaving to get their cards back.

## To those lucky enough to have air conditioning

To help reduce the demand for electricity during the peak daytime period, Physical Plant Services has raised the temperature in air-conditioned buildings by a few degrees. Not only will this save the university money, it will help reduce the demand on the hydro grid. This affects buildings with a central ventilation and cooling source only. Additional measures may be taken should a further decrease in electrical demand be required. Environments such as library special collections and animal care are excluded from these measures. Details: Brian Scovill, 533-6020. □

## Tree dedicated to Edmond E. Watson

Colleagues, students and friends of the late Edmond Watson (1902-2001) are invited to make a gift toward dedicating a tree on campus in his memory. Dr. Watson was an emeritus professor of Physics, and was with the department from 1931 to 1968. The tree will be planted next to Stirling Hall. Those wishing to contribute to the fund may make cheques payable to Queen's

University, indicating the Edmond E. Watson Memorial Tree Fund, and send them to the Advancement Business Office, Old Medical Building, 2nd floor, Queen's University, Kingston, K7L 3N6.



## Grad student's findings address limb formation, inherited deafness

A Queen's graduate student's discovery has implications for limb formation and inherited deafness, and may lead to the development of new therapeutic applications. Marie Evangelista (Biology) is part of a research team (including University of Toronto, Cornell University and the University of Pennsylvania) whose findings were recently published in the journal Science. Working under the supervision of Charlie Boone, formerly of Queen's Biology, Ms. Evangelista used Baker's yeast as a model system to study the mechanisms governing cell growth and cell division. □



Celia Russell

The dog days of summer are here, but not for long. In a few weeks, the streets will be filled with new and returning students.

# Japanese students gain insight into Canadian nursing practices while improving English skills

BY LORINDA PETERSON

Japanese nurses studying abroad have traditionally gone to the U.S. After the events of Sept. 11 prompted them to begin a search for a new destination, they chose Kingston because of its size, predominately English-speaking population and relative safety – and because Queen's international reputation attracts students, says Sister Veronica Mizushima, president of Seibo Junior College of Nursing in Tokyo.

Colleges in Japan have been sending students to Queen's to learn English for several years.

"We heard from them that it has a good School of English and we learned there is a good nursing school at Queen's as well," says Sister Mizushima. "We did some further research and decided to come to Queen's. It has been a very positive experience and we'd like to come back."

There are some interesting differences in hospital management between Canada and Japan, Sister Mizushima notes.

"In Japan there are still departments of nursing and there are head nurses working in the hospitals, but in Canada that has all changed," she says. "I am also very surprised that by 2005 all graduating nurses in Canada will have a BNSc or BSN. In Japan there is still a three-year diploma program as well as the baccalaureate."

Nursing student Kei Kimura was amazed that students in Canada can concentrate their studies and at graduation they are qualified to work as an

obstetrics nurse. In Japan students need to obtain a nursing diploma then take specialized training and qualify for a license to work in obstetrics. "There are so many more specialized nurses in Canada. There are not so many in Japan."

She and 30 other nursing students from the Tokyo college recently participated in a cross-disciplinary immersion program sponsored by Queen's School of English (SOE) and School of Nursing. The first of its kind at Queen's, the program exposed students to Canadian nursing practices while helping them to improve their English.

The Japanese students were surprised to learn that patients don't pay for medical care at the time of service, says Ms. Kei Kimura. "In Japan every patient must pay some percentage of their medical care when that care is provided."

Japanese educators encourage study abroad at all levels of education, says Martha McIntyre, Coordinator Contract Programs (SOE). They especially encourage students to choose English-speaking countries as English is

**"In Japan every patient must pay some percentage of their medical care when that care is provided."**

considered a global language. The general trend in Japan to expose students to an international experience is rooted in its identity as an isolated island culture, she says.

"Now the globe is smaller and smaller," says Sister Mizushima. "Japan is a small island country and a lot of for-



Japanese nursing students Kei Kimura and Maiko Yoshida gain a historical perspective on Canadian nursing practices during a recent tour of the Health Sciences Museum as part of their study abroad program hosted jointly by the School of Nursing and the School of English.

eign people come to our country. When our students go to hospital classes to take care of the foreign people, it is very important for us in our nursing care to know the practices these people are accustomed to in their own countries.

"This kind of program is also very useful for students who want to work in other countries after graduation," she adds. "All our students who went abroad to work this year attended study abroad programs while in college."

While on campus the Japanese students enjoyed tours

of Providence Manor Continuing Care Facility, the Nursing Museum and Kingston General and Hotel Dieu Hospitals to get acquainted with the facilities and education Queen's offers nurses. They also attended two lectures about nursing procedures in Canada that included comparisons of Japanese and Canadian nurses' training systems and standards.

Students also attended daily English conversation classes and were billeted in homes with English-speaking families to complete their immersion in Canadian culture. They visited

Montreal and Niagara Falls and toured local attractions including Fort Henry, the Agnes Etherington Art Centre and Bellevue House.

"I appreciate the hospitality of the host families," says Sister Mizushima. "One purpose of the trip was to learn English and we learned much from our teachers."

"My experience at Queen's will help make me a better nurse in Japan and in other countries. I have learned vocabulary that will help me talk about the body and about diagnoses in English," says Ms. Kimura. □



Laying the foundation for learning. Construction workers work on the foundation of the Integrated Learning Centre at the corner of Division and Union streets between Goodwin (shown at rear) and Dupuis halls. The building is scheduled to open in January, 2004.

Queen's  
**Bright Ideas**  
Energy and water  
conservation tips

## Night Light

Did you know ~ lighting an empty office overnight can waste enough energy to heat water for approximately 200 cups of coffee!



The most up-to-date, comprehensive source of news about Queen's now live .....

..... Queen's News Centre

<http://www.queensu.ca/newscentre>



### Please Note:

- Departments requiring casual hourly paid secretarial or clerical assistance should contact Patti Evaristo in Human Resources, 533-2070.
  - Requisitions for staff replacement, with appropriate approvals, must reach the Human Resources Department by noon of the Monday one week prior to the date of issue.
  - Applications received from internal candidates will be acknowledged by the Department of Human Resources. The results of each competition will be posted under the *Gazette* heading "Appointments" as soon as possible after the conclusion of the recruitment and selection process.
  - Closing date for the following positions is **Tuesday, August 20, 2002 at 4:30 pm. Late applications will not be accepted.** Please submit a letter of application indicating the specific position desired and a detailed resume including your **employee number**.
- Resumes will be accepted from Queen's employees with Internal Status ONLY unless the position specifically invites External applications.**

*Queen's University has an employment equity programme, welcomes diversity in the workplace and encourages applications from all qualified candidates including women, aboriginal peoples, persons with disabilities and racial minorities.*

## Appointments

Student Resource Assistant 2002-23  
Office of the University Registrar (Student Awards)

**Heather-Ann Miller**

Manager, Clinical Education Centre  
2002-27

Clinical Education Centre  
**Lee Fisher-Goodchild**

Film and Video Technician 2002-31  
Film Studies

**Peter Cassidy** (Film Studies)

Senior Secretary 2002-33  
Vice-Principal (Operations and Finance)

**Linda Grant** (Biochemistry)

Systems Analyst 2002-38  
Information Technology Services

**Joe McClelland**

Systems Analyst 2002-39  
Information Technology Services

**Caroline Prefontaine**

Student Resource Assistant 2002-42  
Faculty of Arts and Science

**Mary MacDonald**

Senior Secretary 2002-43  
Health Counselling and Disability Services

**Wendy Ross**

Health Service Nurse 2002-44  
Health, Counselling and Disability Services

**Marilyn Liggett**

Administrative Assistant and Academic  
Advisor 2002-51

Faculty of Arts and Science  
**Kevin O'Brien**

(Office of the University Registrar)

Senior Secretary 2002-53  
International Centre

**Sandra Jeffers**

(University Residences)

Research Unit Assistant 2002-54  
Department of Development

**Ingrid Gagnon**

Graduate Program Assistant 2002-56  
Department of Sociology

**Michelle Ellis** (Department of Art)

Awards Officer 2002-57

Graduate Studies and Research

**Leisa McDonald**

(School of Physical and Health Education)

Coordinator of TA Development 2002-61

Instructional Development Centre

**Katherine Lagrandeur**

Secretary 2002-63

School of Urban and Regional Planning

**Brenda Doyle**

## Staff Vacancies

Following the completion of the Queen's Job Evaluation (QJE) review for positions in Grades 2 – 9, you will notice we have included the cluster in the following job ads which represents the job family, branch and grade (e.g., ADMG5 is Administration Family, General Branch, Grade 5). Generic position overviews for clusters can be found on the HR website at [www.hr.queensu.ca](http://www.hr.queensu.ca).

Specific job overviews for positions advertised under 'Staff Vacancies', with the exception of CUPE Local 229 postings, continue to be available in the HR department.

\*If you wish to be considered for the following positions, apply in writing to **Patti Evaristo**, Human Resources.

### Senior Secretary Undergraduate Medical Education Faculty of Health Sciences 2002-84

This is a three-year term appointment working 80% time.

**Major Responsibilities:** process all elective applications from Queen's medical students and visiting students; provide secretarial support to the Manager and Associate Dean; assist the Coordinator of Problem-Based Learning (PBL) in organizing the PBL sessions, preparing Student/ Tutor Handbooks etc.; provide assistance in the undergraduate office as necessary.

**Requirements:** successful completion of a one-year post-secondary secretarial program; proven on-the-job experience in secretarial duties and other related areas; working knowledge of Macintosh Word and a willingness to learn new software programs as required; excellent interpersonal and communication skills; ability to exercise tact, discretion, confidentiality and diplomacy while dealing with a wide variety of people; ability to work under pressure along with constant demands and interruptions; ability to transcribe from a dictaphone.

**Minimum Hiring Salary:** \$29,338 Salary Grade 4 – ADMG4. Salary will be adjusted to reflect actual time worked.

### Security Supervisor Campus Security 2002-85

This continuing appointment involves working 12-hour rotating shifts (36 hours/week).

**Major Responsibilities:** implement the policies, regulations and procedures of the university's security program to ensure the safety and security of faculty, staff, students and visitors; supervise patrol officers and Emergency Report Center operators; respond to all alarms, security incidents and emergencies; conduct personal safety and cash safety escorts; ensure the automated incident reporting system is updated, generate and post advisory notices and produce comprehensive reports on all incidents.

**Requirements:** post-secondary education in security/law enforcement or security related experience; experience in a supervisory or leadership role; familiarity with and ability to enforce the provisions of the Criminal Code of Canada, the Trespass to Property Act, the Young Offenders Act and the Queen's Code of Conduct; First Aid and CPR certification; valid class G Ontario drivers license; ability to provide a Canadian Police Certificate (CPC); strong leadership and supervisory skills; ability to determine priorities and maintain personal composure when dealing with security incidents; excellent communication and interpersonal skills; must have a positive attitude, good judgment and common sense; facility with various computer programs, trades experience, WHMIS training, familiarity with the campus layout and buildings, and experience with fire alarm procedures are assets.

**Minimum Hiring Salary:** \$34,876 Salary Grade 6 – (ADMSF6) Salary will be adjusted to include a 9.31% premium for working non-traditional hours

\*If you wish to be considered for the following positions apply in writing to **Pat Eaton** in Human Resources

### Program Assistant eQUIP Task Force 2002-86

This is a term appointment until April 30, 2003 working 50 per cent of the time.

**Major Responsibilities:** assist in the submission of institutional applications in support of human and physical research infrastructure, and in the administration of funded projects; track and report on the progress of applications through the development, submission and post-award administration processes; maintain Task Force files; update the web-page and contact database; assist in the preparation of charts, graphs, PowerPoint presentations and reports; perform general office duties such as reception, word processing, and booking travel arrangements.

**Requirements:** one-year post-secondary training in business administration practices or accounting and relevant experience in an office/service environment (or an equivalent combination of education and experience); familiarity with university administrative procedures and the university research environment an asset; excellent organizational skills in order to handle multiple tasks and deadlines; proficiency with MS Word, Excel and PowerPoint; demonstrated knowledge of the Internet, and database, scheduling and email programs; desire and ability to learn new software programs; highly developed attention to detail and accuracy skills; service-oriented perspective with an ability to interact effectively with faculty and staff; strong mathematical skills and ability to present data in a clear and concise manner; ability to recognize and handle confidential information.

**Minimum Hiring Salary:** \$29,338 Salary Grade 4 – ADMG4. Salary will be adjusted to reflect actual time worked.

### Coordinator, Recruitment (International Study Centre) Office of the University Registrar (Admission Services) 2002-87

**Major Responsibilities:** report to and take direction from the Manager, Student Recruitment; plan, coordinate and execute activities related to the marketing of the International Study Centre (ISC) to prospective students with the goal of encouraging well-qualified students to seek admission to the ISC (plan recruitment activities, act as primary contact person for Queen's and CUSAP partners, conduct analysis and planning activities, ensure publications are current to market the ISC).

**Requirements:** university degree (Queen's preferred); experience with the ISC and knowledge of the programs offered; experience developing proposals, project plans, and presentations and organizing, promoting and executing special events; marketing or public relations background; experience in a leadership role; consideration may be given to an equivalent combination of education and experience; excellent communication, organization and leadership abilities; must be creative and willing to develop and implement new ideas and innovative approaches; excellent interpersonal and diplomacy skills in addition to strong intercultural communication skills; computer/database experience; ability to travel and work non-traditional hours; experience with study abroad programs.

**Minimum Hiring Salary:** \$44,847 Salary Grade 8 – ADMSF8

### Coordinator, Research Promotion and Events, Office of the Vice-Principal (Research) 2002-88

This is a term appointment for a period of one year beginning Oct. 1, 2002.

**Major Responsibilities:** report to the Executive Assistant; coordinate the submission of a variety of research prize and award nominations in addition to the preparation of the annual research publication; act as a communications link between the Vice-Principal (Research) portfolio, the *Gazette* Office and News and Media Services;

ensure timely and accurate development of research stories for dissemination to provincial and national associations and councils; coordinate and orchestrate special research recognition events and public lectures.

**Requirements:** undergraduate university degree, preferably with a focus on communications; proven experience in writing and editing; experience in events planning and organization an asset; consideration may be given to an equivalent combination of education and experience; excellent interpersonal, research and analytical skills with the ability to prioritize competing demands; excellent computer skills and the ability to learn new applications; proficiency with word processing, spreadsheets, Power Point, GQL (or equivalent) and the Internet; proven team player; must be results oriented with the ability to work independently and with minimal supervision.

**Minimum Hiring Salary:** \$44,847 Salary Grade 8 – ADMSF8

## Other Positions

### Research Technician, Department of Biochemistry

**Responsibilities:** cloning, constructing expression vectors and protein production; expertise in recombinant DNA technique, PCR and cloning; learn new techniques independently and teach techniques to other lab members; carry out general laboratory duties, including purchasing and account handling. Training provided.

**Requirements:** ability to work as part of a team; proficiency with computers; consideration will be given to an equivalent combination of education and experience.

**Minimum Hiring Salary:** \$30,754 Salary Grade 5 Salary will be competitive and commensurate with experience.

Resume to Dr. Z. Jia, 626 Botterall, Queen's University, Kingston, Ontario, K7L 3N6.

### Medical Secretary, Department of Medicine

This is a contract position, effective immediately until June 30, 2003, with the possibility of yearly renewal.

**Responsibilities:** Provide secretarial support to a physician's clinical, educational, and academic roles; specific tasks include managing schedules, preparing correspondence and teaching materials, communicating with patients and their physicians, maintaining databases, filing, and general office duties.

**Requirements:** One-year post-secondary education (medical secretary or office administration diploma) or equivalent; knowledge of medical terminology; strong computer skills (including Microsoft Office, database, and Internet applications) and ability to learn new software; dictating; bookkeeping; strong organizational and time-management skills; excellent communication and interpersonal skills; ability to produce work with a high level of accuracy. Prior relevant experience and familiarity with the Patient Care System will be considered assets.

**Minimum Hiring Salary:** \$29,338 Salary Grade 4

Please apply with resume and covering letter by Aug. 20 to Dr. Benjamin Chen, Department of Medicine, Etherington Hall 3048B or by fax 533-6695.

### Computer Systems Administrator, Centre for Neuroscience Studies

This is a one-year contract position with possibility of renewal.

**Responsibilities:** Provide computer software support for a major new research initiative funded by the Canadian Foundation for Innovation and the Ontario Innovation Trust; work closely with a group of four researchers to develop and implement new programs to control experiments and collect data including programs to communicate with a variety of hardware devices and to control graphic displays; develop new programs, and enhance existing programs for data analysis; undertake high level analysis and programming for the development of computer programs for the on-line control of experiments, data sampling from a range of devices, and data analysis; write

technical documentation for program maintenance and non-technical documentation for end-user support; assist in selecting suitable software, hardware, and computer systems for data collection and analysis; develop project schedules dealing with projects in different laboratories; assist in planning and coordinating the installation and integration of new computer systems, software packages and operating system upgrades for multiple platforms.

**Requirements:** University degree in a computer science or related area and several years of experience are desirable; candidates with a three-year post-secondary program in Computer Engineering Technology or equivalent or a two-year program with several years of experience or an equivalent combination of education and experience will be considered; proficient in C/C++ and object oriented programming; experience in hardware interfacing and writing device drivers under both DOS and Windows platforms (including NT, 2000 and XP professional); experience with Microsoft Development Studio and associated tools; familiarity with Windows GUI programming, MFC, ActiveX and OLE, VRML and OpenGL, real-time control and multi-threading; proficiency in LabVIEW and/or MATLAB and experience working within a Unix environment would be assets. The candidate should have the qualifications listed above or the capacity to acquire them.

**Minimum Salary** \$47,679. Apply with resume and three references to: Dr. R. Flanagan, c/o Centre for Neuroscience Studies, Room 106, Abramsky Hall, Queen's University, Kingston, Ontario, K7L 3N6. Fax: (613) 533-6840. Applications must be received by Friday, Aug. 23.

### Library Assistant, Stauffer Library

This position is available from Sept. to April, working approximately 9-12 hours per week.

**Responsibilities:** collection maintenance including re-shelving materials and shifting and cleaning as required; dealing with patron inquiries and signing materials in and out.

**Requirements:** Applicants should be able to perform physical work involving bending and squatting as well as be able to perform repetitive motions for extended periods. The applicant should be comfortable working with the public and have good attention to detail. Previous library experience is not necessary.

**Salary:** \$10 per hour including 4 per cent vacation pay. Please submit a resume plus the Stauffer Library application form (available at Stauffer Library) to: Ken Pearce, Stauffer Library, e-mail: pearcek@post.queensu.ca, phone : 533-6000, ext. 75574. Deadline: Sept.9, 2002.

## Notices

### Employee Assistance Program

For off-campus professional counselling call toll free: 1-800-387-4765 (français 1-800-361-5676). This service can be reached 24 hours a day, seven days a week. Further information is now available on the following website: [www.queensu.ca/eap/](http://www.queensu.ca/eap/)

### Tuition Support Plan on-line application system available

On Aug. 15, 2002 an on-line application will be available for all eligible active staff for the Tuition Support Plan. Submission period for this fall begins Oct. 1, 2002 and ends Nov. 30, 2002. The Tuition Support Plan benefit has specific terms and conditions for each employee group as to eligibility and entitlement. We recommend each person review those terms and conditions prior to using the on-line system. A link to the terms and conditions will also be on-line. To use the on-line system go to: <http://www.eservices.its.queensu.ca/staff>. For assistance, please contact Margaret Goslin, Human Resources.

# Bulletin Board

## Appointments

### Dr. Kenneth B. Sutherland appointed as Head, Department of Diagnostic Radiology

Principal William Leggett announces that Dr. Ken Sutherland has been appointed as Head of the Department of Diagnostic Radiology for an initial term from July 1, 2002 to June 30, 2007. Dr. Sutherland is also to be appointed as Radiologist-in-Chief at Kingston General Hospital, Hotel Dieu Hospital and Providence Continuing Care Centre for a concurrent term, subject to ratification by the Hospital Boards. After graduating with a BSc in pharmacy in 1974 from Dalhousie University, Dr. Sutherland was employed as a pharmacist with the Canadian Forces until 1978, when he returned to Dalhousie to study medicine. He obtained his MD in 1982 and completed his internship training in 1983. Dr. Sutherland subsequently served as a Medical Officer in the Canadian Forces at bases in North Bay, Ontario, Halifax, Nova Scotia, and Petawawa, Ontario. Dr. Sutherland retired from the Canadian Forces at the rank of Lieutenant-Colonel after 20 years of service, his last appointment as Commanding Officer of 2 Field Ambulance. Dr. Sutherland entered the Diagnostic Radiology Residency Program at Queen's in 1990 and received his Fellowship from the Royal College of Physicians and Surgeons of Canada in 1994. He completed further fellowship training in thoracic imaging at the State University of New York in Syracuse in 1995 when he returned to Queen's University as an Assistant Professor in the Department of Diagnostic Radiology. Dr. Sutherland has served as Acting Head of the Department since July 2001. Dr. Sutherland serves as Medical Director of the Eastern Ontario School of X-ray Technology and is a member of the Canadian Heads of Academic Radiology and the Diagnostic Imaging Specialty Training Committee. His published articles and presentations pertain primarily to imaging of the thorax.

### Rabbi Justin Jaron Lewis appointed Director of Jewish Studies

Principal William Leggett announces that Rabbi Justin Jaron Lewis has been appointed Director of the Jewish Studies program in the Faculty of Arts and Science for a three-year term commencing Aug. 1, 2002. Rabbi Lewis holds a BA and MA in Post-Biblical Hebrew Language and Literature from the University of Toronto. He is currently completing his doctoral dissertation, a historical and thematic study of Hasidic tales. He has held a research fellowship at the YIVO Institute for Jewish Research in New York City (1999), and a 3-year SSHRC fellowship at the University of Toronto. Rabbi Lewis has published two academic papers and four encyclopaedia entries, as well as a number of short stories, and is the on-line teacher of two adult education courses in Judaism through Kolel, Toronto. He has given workshops and lectures on storytelling and topics in Judaism in a variety of venues in Canada and the USA. Since summer 2000 he has served on a part-time basis as rabbi of Congregation Iyr HaMelech, Kingston's Reform Jewish community. He completed his rabbinic studies and was ordained in May 2001 at the Academy for Jewish Religion in New York City. Rabbi Lewis' current research focuses on Hasidism and on a medieval Yiddish manuscript on the lives of Biblical women, which he is involved in transcribing and translating. In making this announcement, Principal Leggett wishes to express his appreciation for the leadership provided by Dr. Gerald Tulchinsky during his three-year term as Director of the Jewish Studies program.

### Candice Christmas appointed Assistant Director, Centre for Knowledge-Based Enterprises (KBE)

The KBE Centre announces that Candice Christmas has been appointed Assistant Director. Candice is a Queen's graduate and has had wide experience with knowledge-based organizations. Her most recent position was Director of Tourism Marketing Partnerships for the Kingston Economic Development Corporation (KEDCO). Her skills in project management, marketing and partnership development will help the KBE Centre advance its mandate of becoming recognized as a world-class research centre for knowledge-based enterprises.

### Lewis L. Tomalty appointed Head, Department of Microbiology and Immunology

Principal William Leggett announces that Lewis Tomalty has been appointed Head of the Department of Microbiology and Immunology for a five-year term commencing July 1, 2002. Dr. Tomalty received his BSc from Concordia University, his MSc from the University of Alberta and his PhD from the University of Toronto, Toronto Institute of Medical Sciences. In 1986, he joined the Department of Microbiology and Immunology at Queen's, was cross-appointed to the Department of Pathology, and appointed as Assistant Microbiologist of Medical Microbiology at Kingston General Hospital. He was appointed as Associate Director of Clinical Microbiology at Kingston General Hospital in 1991 and as Director in 1999. Dr. Tomalty was promoted to the rank of Associate Professor in the Departments of Microbiology and Immunology and Pathology in 1995. He was named the Associate Dean of Continuing Medical Education for the Faculty of Health Sciences in 1999. A highly respected educator, Dr. Tomalty has been presented with numerous awards, including the prestigious John Ruedy Award for Innovation in Medical Education which is a national award presented annually to an individual or group who has been innovative in developing teaching aids. He is co-author of two multi-media CD-ROM programs, that are used world-wide as the major multi-media programs in microbiology, and co-developer of the first on-line continuing education program and two internet distance based education courses in science at Queen's. He is a member of the Board of Directors for the Canadian College of Microbiology and he is editor for the American Society for Microbiology Image Collection. In making this announcement, Principal Leggett expresses his appreciation for the outstanding leadership provided by Dr. Peter Aston during his 16 years as Head of Department.

### Dr. Iain D. Young appointed Head, Department of Pathology

Principal William Leggett announces that Dr. Iain Young has been appointed as Head of the Department of Pathology for an initial term from July 1, 2002 to June 30, 2007. Dr. Young is also to be appointed as Pathologist-in-Chief at Kingston General Hospital and Hotel Dieu Hospital for a concurrent term, subject to ratification by the Hospital Boards. After graduating from McGill University with a BSc in 1976 and MD in 1982, Dr. Young undertook his internship training in internal medicine at the Royal Victoria Hospital and McGill. He came to Queen's University for his residency training in anatomic pathology and, immediately upon completion in 1987, he was appointed as Assistant Professor in the Queen's Department of Pathology and Director of the Autopsy Service at Kingston General Hospital. Dr. Young was promoted to Associate Professor and granted Tenure in 1993. Dr. Young has pursued a successful research program funded primarily by the Medical Research Council of Canada

and the Alzheimer Society of Canada and, in 1995, he assumed substantial administrative responsibilities as Service Chief of the Division of Anatomic Pathology. He has served on several committees for national level funding agencies, including the National Cancer Institute of Canada. Appointed as Chair of the Anatomic Pathology consolidation Committee, Dr. Young was instrumental in overseeing the successful amalgamation of the Department from two sites to one. Since the amalgamation in 1996, he has served as Service Chief of the combined Division of Anatomic Pathology. In making this announcement, Principal Leggett wishes to express his appreciation for the outstanding leadership provided by Dr. Paul Manley throughout two five-year terms as Head of the Department of Pathology.

## Notices

### Physical Education Centre

Monday, Aug. 5 - Sunday, Sept. 1  
Monday to Friday 7 am - 6 pm  
Saturday & Sunday Closed  
*Recreation Swim*  
Monday, Wednesday, and Friday 7:15 am - 8:15 am  
Monday to Friday 12 pm - 1:30 pm  
Monday to Thursday 4:30 pm - 6 pm

### Note:

The Phys. Ed. Centre will be closed Monday, Sept. 2.

The swimming pool will be closed Monday, Aug. 12 to Monday, Sept. 2 for annual maintenance.

Fall and winter hours start Tuesday, Sept. 3.

### Wanted

Table-top centrifuge (refrigeration not required). Please call KGH at 549-6666 ext 3499.

### Queen's Women's Association

Women faculty, spouses of faculty or staff interested in joining are invited to attend the annual membership reception Wednesday, Sept. 18. Interest groups include book discussion, French and English discussion, bridge and genealogy, sports, excursions and more. For details, contact Lynn Nolan at 389-8747.

## PhD Examinations

Members of the regular staff at the university may attend PhD oral thesis examinations.

### Monday, Aug. 12

**Ninetta Buscemi**, Physiology. Application of reductionist and proteomic approaches to the study of the role of the Rac/PAK signaling pathway in cardiac muscle function. Supervisor: J.E. Van Eyk. 449 Botterell, 10 am.

### Thursday, Aug. 15

**Zengxiang Wang**, Management. Option pricing with regime switching GARCH volatility. Supervisor: I.G. Morgan. Room B204 Mackintosh-Corry Hall, 9 am.

**Wei Zha**, Electrical and Computer Engineering. Multiuser receiver structures for CDMA. Supervisor: S.D. Blostein. 302 Walter Light, 2 pm.

### Tuesday, Aug. 20

**Allyson Joy Campbell**, Chemistry. New directions in post-traumatic Epilepsy research. Supervisor: D.F. Weaver. 121 Stauffer, 9:30 am.

### Thursday, Aug. 22

**Elaine MacKay Leslie**, Pharmacology and Toxicology. Substrate specificity and structure function relationships of the multi-drug resistance protein 1 (MRP1). Supervisor: S.P.C. Cole. 569 Botterell, 9 am.

**Magali Gasse-Houle**, French Studies. Écrire la peinture: Le journal d'Eugène Delacroix. Supervisors: F. Rouget and J-J. Hamm. 318 Kingston, 2 pm.

### Tuesday, Aug. 27

**Remus Claudiu Floricel**, Mathematics and Statistics. Endomorphisms of Von Neumann Algebras. Supervisor: J.A. Mingo. 521, Jeffery, 10 am.

### Wednesday, Aug. 28

**Michelle Denise St. Amand**, Psychology. The coping-relapse model of recidivism and the prediction of failure after release. Supervisors: E. Zamble and V. Quinsey. 228 Humphrey, 1 pm.

**Katherine Lagrandeur**, French Studies. Poétique de la perte dans l'oeuvre autobiographique d'Elie Wiesel. Supervisor: J. Bérnard. 318 Kingston, 10 am.

**Catherine Louise LeBlanc**, Psychology. An examination of the stress process model: Spousal caregivers of cancer patients receiving chemotherapy. Supervisor: W. Gekoski. 210 Craine Building, 1 pm.

### Thursday, Aug. 29

**Lena Kristina McPhee**, Biology. Green and non-green fluorescing forms of *Montastrea faveolata* (Ellis and Solander, 1786), and their role in photoprotection of Caribbean Corals. Supervisor: P. Boag. 3108 Biosciences, 10:30 am.

**Sara Louise Jamieson**, English. "There is no sadness / I can't enter": Four Canadian women poets and the contemporary elegy. Supervisor: T. Ware. 402 Watson, 10 am.

### Friday, Aug. 30

**Salma Shirin**, Chemistry. Role of  $\beta$ -cyclodextrins on solubilization and iron-mediated dechlorination of trichloroethylene and tetrachloroethylene. Supervisors: G.W. vanLoon and E. Buncel. Location: TBA, 10 am.

### Tuesday, Sept. 3

**Hatem El-Rafaei**, Electrical and Computer Engineering. An InGaAsP/InP on-chip polarization bit interleaver for 40Gb/s optical transmission systems. Supervisor: D. Yevick. 302 Walter Light, 2 pm.

**Katheryn Margaret Adeney**, Electrical and Computer Engineering. Iterative orthogonal search techniques for identification of generalized single-layer networks. Supervisor: M. Korenberg. 302 Walter Light, 10 am.

### Wednesday, Sept. 4

**Brain Matthew Frank**, Electrical and Computer Engineering. CMOS for X to K band microwave circuits. Supervisors: A.P. Freundorfer and Y. Antar. 302 Walter Light, 2 pm.

### Thursday, Sept. 5

**Lynn Margaret Woodford**, Psychology. Sharing the pain with friends: Grief and support among late adolescent women. Supervisor: P. Minnes. 228 Humphrey, 1:30 pm.

**Constanza Carolina Bianchi**, Management. An institutional perspective on retail internationalisation success. Supervisor: S.J. Arnold. Sutton Room, Goodes Hall, 2:30 pm.

**Jim Karagiannis**, Biology. Environmental pH stress and its effects on growth, the cell cycle, and intracellular pH homeostasis in *Schizosaccharomyces Pombe*. Supervisor: P.G. Young. 3110 Biosciences, 9 am.

### Friday, Sept. 6

**Gordon Chua**, Biology. Nutritional modulation of the mitotic size control in fission yeast. Supervisor: P.G. Young. 3110 Biosciences, 9 am.

### Monday, Sept. 9

**Pin-Han Ho**, Electrical and Computer Engineering. Control and management for the survivable optical next-generation internet. Supervisor: H.T. Mouftah. 428, Walter Light, 2:30 pm.

## Volunteers

### Exercise Study for Men Ages 35-55

Sedentary lean men (BMI less than 25) and men with Type II Diabetes (BMI 30-35) needed to participate in a 13-week study investigating the effects of exercise

on caffeine and insulin resistance. For information, please contact Ann-Marie Kungl at (613) 533-6000 ext. 75118.

### Pretend patients

Standardized Patients needs people to play the roles of patients who have signs and symptoms of an illness. You will be interviewed and/or examined by medical students who are learning to communicate with patients or to examine patients with certain medical, surgical, emotional or ethical problems. Patients are especially needed on Tuesday afternoons from mid-Sept. - late March, and on Thursday afternoons from early March-early May. Men aged 20-40 and people of colour are particularly encouraged to apply. Details: Diane Morales, 533-6887, dlm1@post.queensu.ca.

## Calendar

### Art

**The Agnes Etherington Art Centre**  
University Avenue

**Ongoing exhibitions** - Contemporary Feature Gallery, Better Worlds, July 13 to Oct. 27. African and Frances K. Smith Galleries, "A Forest of Flowers": Words and Sculpture of West Africa, July 28 to Oct. 12. The Davies Foundation Gallery, In Case of rapture: The Herbert O. Bunt Donation, June 22 to Jan. 26, 2003. Historical Feature and R. Fraser Elliott Galleries, Kazuo Nakamura: the Method of Nature to Sept. 8. Samuel J. Zacks Gallery, Learn Well and Progress Daily: Posters from the Chinese Cultural revolution, June 20 to Oct. 27; Bader Gallery, The Contemplative Imagination to Aug. 17. 533-6913.

### Events

Tours: Sundays at 1:15 pm; Third Thursday each month 12:15 pm. www.queensu.ca/age/h/

**Union Gallery**  
uniongallery.queensu.ca

## Public Lectures

### Wednesday, Aug. 14

#### Biology

**Fiona Reid**, QUBS Visiting Scholar, biologist, artist, writer, tour guide. Bats of Costa Rica: diversity and conservation. Queen's University Biological Station, 7:30 pm. Details, 359-5629.

### Thursday, Aug. 15

#### Queen's Centre for Knowledge-Based Enterprises

**Maryam Alavi**, Visiting Scholar, Emory University. Changing Higher Education: The Siren Song of Technology. 241 McLaughlin, John Deutsch University Centre, 2:30 pm. Reception to follow.

## Seminar Schedules

### Business

business.queensu.ca/research/conferences/index.html

### Chemistry

www.chem.queensu.ca/NEWSANDEVENTS/Seminars/Seminar02W.PDF

### Centre for Neuroscience Studies

www.queensu.ca/neurosci/seminar.html

### Economics

qed.econ.queensu.ca/pub/calendar/week.html

### Physiology

meds-ss10.meds.queensu.ca/medicine/physiol/physiol.sem.html